

**MALMO 1 (MAL-80042)**



**Product description**

Down - 995 mm



microPrim™

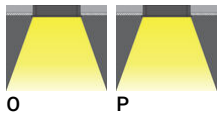
**Luminaire Structure**

- Extruded aluminium bended profile with powder coating
- Passive thermal management
- Stainless steel fasteners in grade 304 with zinc flake coating (ZFC)
- PMMA diffuser with Opal (UGR <19) and micro prismatic (UGR <13) options for better glare control

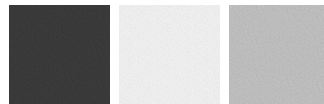
- Remote driver (included)
- Stainless steel brackets and screws for mounting
- Down light distribution only
- Wireless control available through Bluetooth connection

- Daylight and occupancy sensor options
- Emergency module (1 or 3 hours) is available upon request with 3 options (BASIC, SELF-TEST, PRO-DALI)

**Optic**

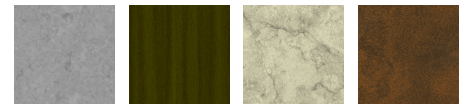


**Product colour**



01 - Black (RAL 9011)    03 - White (RAL 9003)    05 - Matt Silver (RAL 9006)

**Special finishes upon request**



SU01 - Concrete - Urban    SU02 - Softscape - Urban    SU03 - Stone - Urban    SU04 - Corten - Urban



SW01 - Oak - Woodland    SW02 - Walnut - Woodland    SW03 - Pine - Woodland

**MALMO 1 (MAL-80042)**

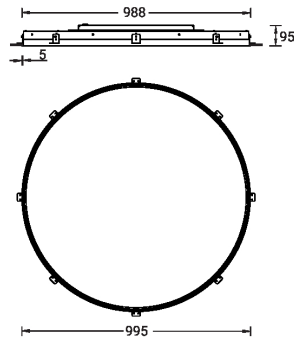
**Technical information**

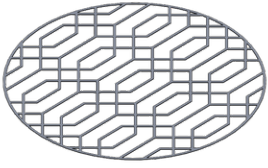
<b>Material</b>	Aluminium
<b>Light source</b>	1872 LED
<b>Power</b>	157 W
<b>Lumen</b>	18547 - 21948 lm
<b>Efficacy</b>	79 - 94 lm/W
<b>Driver option</b>	Remote driver (included)
<b>Driver</b>	Constant current (CC)

<b>Input voltage</b>	220-240 V 50/60 Hz
<b>Optic</b>	O, P
<b>Optic value</b>	107°, 94°
<b>CCT / CRI</b>	3000K CRI80, 4000K CRI80
<b>Bug</b>	B4-U0-G2
<b>ULR</b>	0%
<b>ULOR</b>	0%

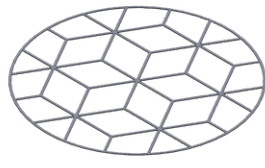
<b>CIE flux code n°3</b>	96, 97
<b>Dimming type</b>	On/Off, 1-10V, DALI
<b>Product colours</b>	Black, White, Matt Silver, Concrete - Urban, Softscape - Urban, Stone - Urban, Corten - Urban, Oak - Woodland, Walnut - Woodland, Pine - Woodland
<b>Weight</b>	12.4 kg
<b>Operating temperature</b>	-20 °C to 40 °C
<b>Variants (On/Off, 1-10V, DALI)</b>	Compatible with EN/ IEC 60598-2-22: Suitable for emergency installations as central supply, non-maintained (ZO)

MAL-80042

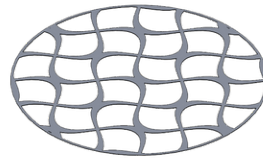


**MALMO 1 (MAL-80042)****Accessory**

Decorative pattern - Type A for  
MALMO 1000 mm  
**A91221**



Decorative pattern - Type B for  
MALMO 1000 mm  
**A92621**



Decorative pattern - Type C for  
MALMO 1000 mm  
**A94021**



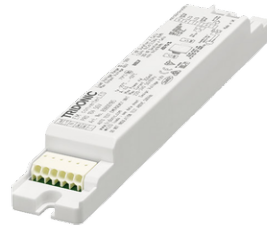
Wireless bluetooth converter  
**A90291**



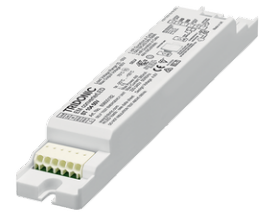
Xpress wireless switch  
**A90591**



Emergency module - 250V -  
BASIC  
**EM250V-BA**



Emergency module - 250V -  
PRO-DALI  
**EM250V-DA**



Emergency module - 250V -  
SELF-TEST  
**EM250V-ST**



DALI Control System  
**Control-DALI**