

OULU 8 (OUL-81122)



Product description

Down (Optic) & Up (Optic 2nd) - 22.5° - R2500 - RGBW



microPrim™

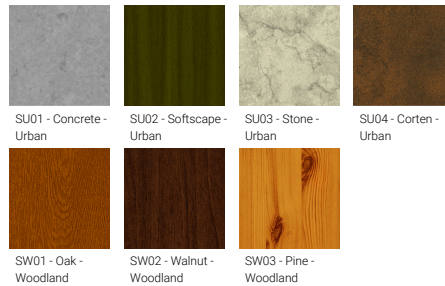
Luminaire Structure

- Die-cast aluminium end-caps and extruded aluminium profile with powder coating
- Multiple angles available
- Passive thermal management
- Stainless steel fasteners in grade 304 with zinc flake coating (ZFC)
- Opal PMMA diffuser (UGR <19) for glare control
- Integral control gear
- Steel brackets for ceiling down mounting option
- Up and down light distribution options
- Wireless control available through Bluetooth connection

Product colour



Special finishes upon request

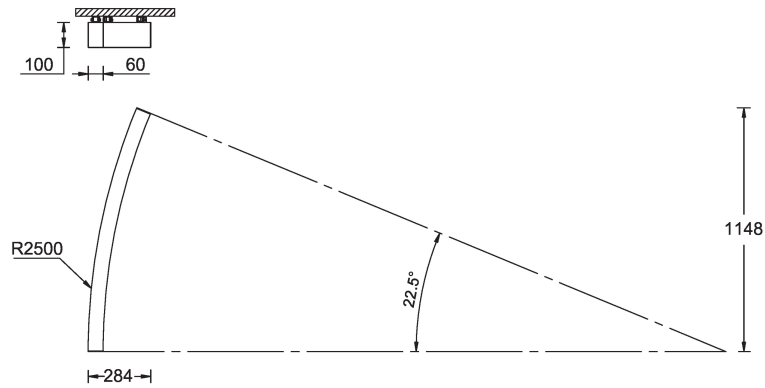


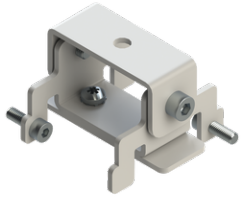
OULU 8 (OUL-81122)

Technical information

| | | | | | |
|----------------------|-----------------------|--------------------------|-----------------------|------------------------------|---|
| Material | Aluminium | Driver | Constant current (CC) | CCT / CRI | RGBW30, RGBW40 |
| Light source | 240 & 240 LED | Input voltage | 220-240 V 50/60 Hz | Dimming type | DMX/RDM |
| Power | 31 W | Optic | O | Product colours | Black, White, Matt Silver, Concrete - Urban, Softscape - Urban, Stone - Urban, Corten - Urban, Oak - Woodland, Walnut - Woodland, Pine - Woodland |
| Lumen | 1743 - 1797 lm | Optic value | Opal | | |
| Efficacy | 56 - 58 lm/W | Optic (2nd) | O | | |
| Driver option | Integral control gear | Optic (2nd) value | Opal | Weight | 3.0 kg |
| | | | | Operating temperature | -20 °C to 40 °C |
| | | | | Variants (DMX/RDM) | Compatible with EN/ IEC 60598-2-22: Suitable for emergency installations as central supply, non-maintained (Z0) |

OUL-81122



OULU 8 (OUL-81122)**Accessory**

Ceiling-mounting bracket (40
mm profile)
A81381



Continuous-coupler bracket
A81781



Xpress wireless switch
A90591



DALI Control System
Control-DALI