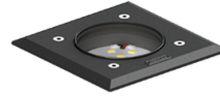


HARRIER 2 (HA-60196-A)



Product description

Integral control gear - With recessing box - Square - Aluminium frame

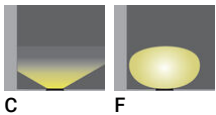


microPrim™

Luminaire Structure

- Die-cast aluminium housing
- Pre-treated before powder coating ensuring high corrosion resistance
- 6 mm thick front ring in grade 316 stainless steel or aluminium
- Single cable entry, through wiring upon request
- One cable gland supplied with 1 m of 3x1.0 sqmm outdoor cable
- Stainless steel fasteners in grade 316
- Durable silicone rubber gasket
- Clear or frosted toughened glass
- Integral control gear
- Recessing box in high-density polyethylene is included
- Suitable for walk-over with a maximum load of 200 kg

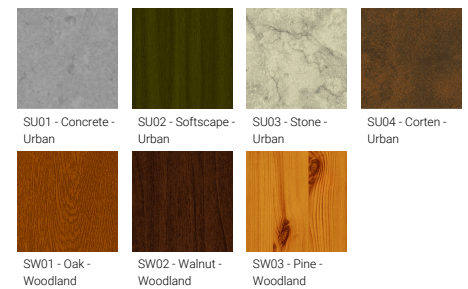
Optic



Product colour



Special finishes upon request



HARRIER 2 (HA-60196-A)

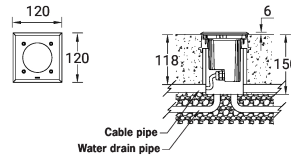
Technical information

Material	Aluminium
Light source	12 LED
Power	6 W
Lumen	163 - 291 lm
Efficacy	27 - 49 lm/W
Driver option	Integral control gear
Driver	Constant current (CC)
Input voltage	220-240 V 50/60 Hz

Optic	C, F
Optic value	90°, 78°
CCT / CRI	3000K CRI80, 4000K CRI80
Bug	B0-U3-G0
ULR	100%
ULOR	100%
Dimming type	On/Off
Product colours	Black, Dark Grey, White, Matt Silver, Bronze, Concrete - Urban, Softscape - Urban, Stone - Urban, Corten - Urban, Oak - Woodland, Walnut - Woodland, Pine - Woodland

Weight	0.5 kg
Operating temperature	-20 °C to 50 °C
Cable	One cable gland supplied with 1 m of 3x1.0 sqmm outdoor cable
Through wiring	Single cable entry, through wiring upon request
Lens / Reflector / Optic	Clear or frosted toughened glass
Variants (On/Off)	Compatible with EN/ IEC 60598-2-22: Suitable for emergency installations as central supply, non-maintained (Z0)

HA-60196-A



HARRIER 2 (HA-60196-A)**Accessory**



Connector IP68 3 Pin Power
A62591



Connector IP68 5 Pin Power +
Signal
A613191
