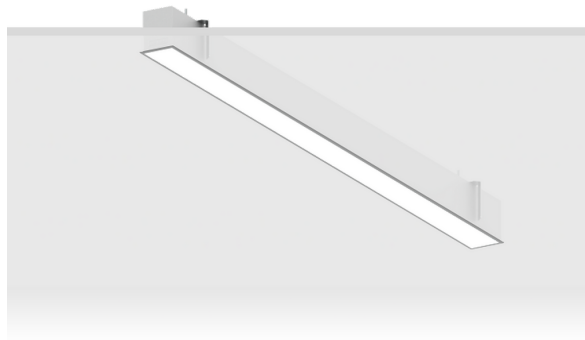


**NYBRO 4 (NYB-80352)**



**Product description**

Down - 60x80 mm - 2330 mm - Trimless



microPrim™

**Luminaire Structure**

- Die-cast aluminium end-caps and extruded aluminium profile with powder coating
- Passive thermal management
- Stainless steel fasteners in grade 304 with zinc flake coating (ZFC)
- PMMA diffuser with Opal (UGR <19) and micro prismatic (UGR <13) options for better glare control

- Integral control gear
- Stainless steel brackets and screws for mounting
- Down light distribution only
- Wireless control available through Bluetooth connection

- Daylight and occupancy sensor options
- Emergency module (1 or 3 hours) is available upon request with 3 options (BASIC, SELF-TEST, PRO-DALI)

**Optic**

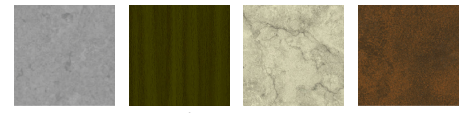


**Product colour**



01 - Black (RAL 9011)    03 - White (RAL 9003)    05 - Matt Silver (RAL 9006)

**Special finishes upon request**



SU01 - Concrete - Urban    SU02 - Softscape - Urban    SU03 - Stone - Urban    SU04 - Corten - Urban



SW01 - Oak - Woodland    SW02 - Walnut - Woodland    SW03 - Pine - Woodland

**NYBRO 4 (NYB-80352)**

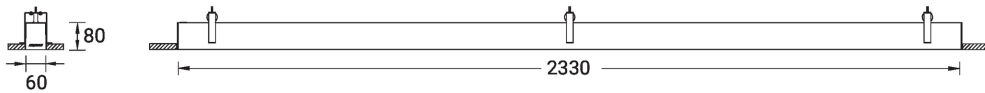
**Technical information**

|                      |                       |
|----------------------|-----------------------|
| <b>Material</b>      | Aluminium             |
| <b>Light source</b>  | 288 LED               |
| <b>Power</b>         | 50 W                  |
| <b>Lumen</b>         | 4859 - 6109 lm        |
| <b>Efficacy</b>      | 97 - 122 lm/W         |
| <b>Driver option</b> | Integral control gear |
| <b>Driver</b>        | Constant current (CC) |

|                        |   |
|------------------------|---|
| <b>Input voltage</b>   | 220-240 V 50/60 Hz  |
| <b>Optic</b>           | O, P  |
| <b>Optic value</b>     | Opal, Micro-prismatic   |
| <b>CCT / CRI</b>       | 3000K CRI80, 4000K CRI80  |
| <b>Dimming type</b>    | On/Off, 1-10V, DALI   |
| <b>Product colours</b> | Black, White, Matt Silver,<br>Concrete - Urban, Softscape -<br>Urban, Stone - Urban, Corten -<br>Urban, Oak - Woodland, Walnut -<br>Woodland, Pine - Woodland |
| <b>Weight</b>          | 6.8 kg  |

|                                       |   |
|---------------------------------------|---|
| <b>Operating temperature</b>          | -20 °C to 40 °C   |
| <b>MacAdam Ellipse</b>                | 3 SDCM  |
| <b>Lifetime L90B10 (hours)</b>        | > 23,000  |
| <b>Lifetime L80B10 (hours)</b>        | > 45,000  |
| <b>Lifetime L80B50 (hours)</b>        | > 50,000  |
| <b>Variants (On/Off, 1-10V, DALI)</b> | Compatible with EN/ IEC 60598-2-22: Suitable for emergency installations as central supply, non-maintained (Z0) |

NYB-80352



**NYBRO 4 (NYB-80352)****Accessory**

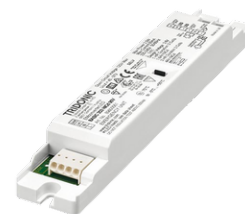
Continuous-coupler bracket  
(60/70 mm Down & 60 mm  
Down & Up profile)  
**A81581**



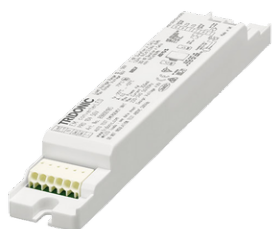
Wireless bluetooth converter  
**A90291**



Xpress wireless switch  
**A90591**



Emergency module - 250V -  
BASIC  
**EM250V-BA**



Emergency module - 250V -  
PRO-DALI  
**EM250V-DA**



Emergency module - 250V -  
SELF-TEST  
**EM250V-ST**