

NYBRO 10 (NYB-90345)



Product description

Down (Optic) & Up (Optic 2nd) - 60x95 mm - 1754 mm
- RGBW



microPrim™

Luminaire Structure

- Die-cast aluminium end-caps and extruded aluminium profile with powder coating
- Passive thermal management
- Single cable entry
- Stainless steel fasteners in grade 304 with zinc flake coating (ZFC)
- Durable silicone rubber gasket

- PMMA diffuser with Opal (UGR <19) and micro prismatic (UGR <13) options for better glare control
- Integral control gear
- Stainless steel brackets and screws for mounting
- Up and down light distribution options
- Wireless control available through Bluetooth connection

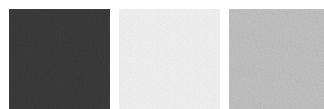
- Daylight and occupancy sensor options
- Emergency module (1 or 3 hours) is available upon request with 3 options (BASIC, SELF-TEST, PRO-DALI)
- Track can be integrated into NYBRO products upon request and upon receipt of design drawings

Optic



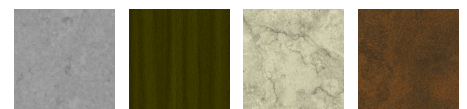
O / O P / O

Product colour



01 - Black (RAL 9011) 03 - White (RAL 9003) 05 - Matt Silver (RAL 9006)

Special finishes upon request



SU01 - Concrete - Urban SU02 - Softscape - Urban SU03 - Stone - Urban SU04 - Corten - Urban



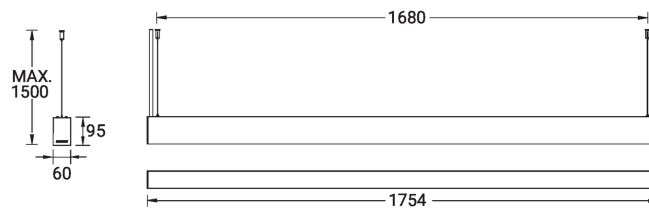
SW01 - Oak - Woodland SW02 - Walnut - Woodland SW03 - Pine - Woodland

NYBRO 10 (NYB-90345)

Technical information

Material	Aluminium	Driver	Constant current (CC)	CCT / CRI	RGBW40
Light source	288 & 272 LED	Input voltage	220-240 V 50/60 Hz	Dimming type	Bluetooth
Power	122 W	Optic	O, P	Product colours	Black, White, Matt Silver, Concrete - Urban, Softscape - Urban, Stone - Urban, Corten - Urban, Oak - Woodland, Walnut - Woodland, Pine - Woodland
Lumen	8470 lm	Optic value	Opal, Micro-prismatic		
Efficacy	69 lm/W	Optic (2nd)	O		
Driver option	Integral control gear	Optic (2nd) value	Opal	Weight	6.6 kg
				Operating temperature	-20 °C to 40 °C

NYB-90345



NYBRO 10 (NYB-90345)

Accessory



Continuous-coupler bracket
(60/70 mm Down & 60 mm
Down & Up profile)
A81581



Supply cable surface mounting
box
A80981



Xpress wireless switch
A90591



Integrated track - 3 phase - DALI
for NYBRO
A81491



Integrated track - 3 phase - On-
off for NYBRO
A81391



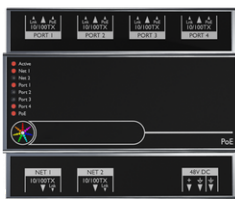
SLESA-U9, DMX Controller 256
CH
A60491



SLESA-U11, DMX Controller
1024 CH
A66891



TPC (Touch Panel Controller) &
EXT (Extension) 1 Universe
A64491



PoE Connect
A64591



TPC Touch Screen & LPC
Controller DMX 2 Universe
A64691



DMX/RDM Splitter - 1 channel
input, 4 channels output
A64791



Cloud Remote Management
A64991



STICK-KE2, DMX Controller 1024
CH
A65091



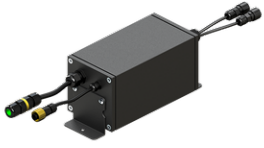
TPS Touch Panel Station
A65191



LPCX (Lighting Playback
Controller X)
A66991



EDN 10 (Ethernet Data Node 10
Universes)
A65391

NYBRO 10 (NYB-90345)

DMX splitter & amplifier within
an IP65 box
A63991



DINA-DR MICRO, DMX Lighting
Controller & Power Adapter, 60
CH
A67291
