

**HARRIER 1 (HA-60385-S)****Product description**

With remote box IP-rated / remote driver / recessing box - Round - Stainless steel frame

**Luminaire Structure**

- Die-cast aluminium housing
- Pre-treated before powder coating ensuring high corrosion resistance
- 6 mm thick front ring in grade 316 stainless steel or aluminium
- Single cable entry, through wiring upon request
- Stainless steel fasteners in grade 316
- Durable silicone rubber gasket
- Clear toughened glass
- High-efficiency PMMA lens
- Remote driver (included)
- Recessing box in high-density polyethylene is included
- Suitable for walk-over with a maximum load of 200 kg

**Optic****Product colour**

00 - Stainless Steel

**HARRIER 1 (HA-60385-S)**

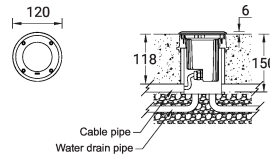
**Technical information**

<b>Material</b>	Stainless Steel
<b>Light source</b>	3 LED
<b>Power</b>	8 W
<b>Lumen</b>	531 - 733 lm
<b>Efficacy</b>	66 - 92 lm/W
<b>Driver option</b>	Remote driver (included)
<b>Driver</b>	Constant current (CC)

<b>Input voltage</b>	220-240 V 50/60 Hz
<b>Optic</b>	N, M, W
<b>Optic value</b>	24°, 28°, 45°
<b>CCT / CRI</b>	3000K CRI80, 4000K CRI80
<b>Bug</b>	B0-U4-G0
<b>ULR</b>	100%
<b>ULOR</b>	100%

<b>Dimming type</b>	On/Off, 1-10V, DALI
<b>Product colours</b>	Stainless Steel
<b>Weight</b>	0.7 kg
<b>Operating temperature</b>	-20 °C to 50 °C
<b>Through wiring</b>	Single cable entry, through wiring upon request
<b>Lens / Reflector / Optic</b>	Clear toughened glass, High-efficiency PMMA lens
<b>Variants (On/Off, 1-10V, DALI)</b>	Compatible with EN/ IEC 60598-2-22: Suitable for emergency installations as central supply, non-maintained (Z0)

HA-60385-S



**HARRIER 1 (HA-60385-S)****Accessory**

---



---

Connector IP68 3 Pin Power  
**A62591**

---



---

DALI Control System  
**Control-DALI**

---



---

Connector IP68 5 Pin Power +  
Signal  
**A613191**

---