

MALTA 1 (MAT-30001) (Version 1)**Product description**

Without remote driver - Constant voltage (CV) 24 V -
Stainless steel - IP65

**Luminaire Structure**

- Aluminium or stainless steel body
- Single cable entry
- One cable gland supplied with 1 m of 2x1.0 sqmm outdoor cable
- Stainless steel fasteners in grade 304 with zinc flake coating (ZFC)
- Durable silicone rubber gasket
- High-efficiency PMMA lens
- Remote driver (not included)
- Standard unit length is 1 m, different lengths are available upon request
- All handrails and components are delivered completely pre-assembled for on-site installation
- LIGMAN prepares project handrail solutions according to layout drawings, elevations and project's brief; offering an end-to-end solution from concept through to implementation

Optic**G****Product colour**00 - Stainless
Steel

MALTA 1 (MAT-30001) (Version 1)

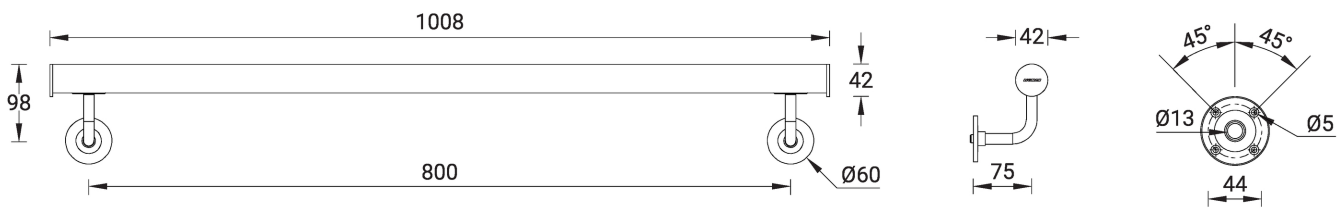
Technical information

Material	Stainless Steel
Light source	120 LED/m
Power	9 W
Lumen	303 - 325 lm
Efficacy	34 - 36 lm/W
Driver option	Remote driver (not included)
Driver	Constant voltage (CV)
Input voltage	24 VDC

Optic	G
Optic value	60°x111°
CCT / CRI	3000K CRI80, 4000K CRI80, 5700K CRI80
Bug	B0-U0-G0
ULR	0%
ULOR	0%
CIE flux code n°3	98
Dimming type	On/Off

Product colours	Stainless Steel
Weight	3.5 kg/m
Operating temperature	-20 °C to 40 °C
Cable	One cable gland supplied with 1 m of 2x1.0 sqmm outdoor cable
Through wiring	Single cable entry
Lens / Reflector / Optic	High-efficiency PMMA lens

MAT-30001



MALTA 1 (MAT-30001) (Version 1)**Accessory**

Connector for cap rail - Straight
A30181



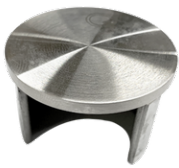
Connector for cap rail - Flush
elbow 90°
A30281



Connector for cap rail -
Adjustable flush angle, 135°
downwards
A30481



Connector for cap rail -
Adjustable flush angle, 135°
upwards
A30381



End cap for cap rail
A30581



Wall bracket
A30681



Driver (CV) - On/Off - 60 W - IP67
- 24 V
A34591-ND



Driver (CV) - On/Off - 100 W -
IP67 - 24 V
A34791-ND



Driver (CV) - On/Off - 150 W -
IP67 - 24 V
A34891-ND



Driver (CV) - On/Off - 36 W - IP67
- 24 V
A34491-ND



Driver (CV) - On/Off - 200 W -
IP67 - 24 V
A34991-ND



Driver (CV) - On/Off - 350 W -
IP67 - 24 V
A35091-ND