

ARDEN 2 (ARD-80113)



Product description

Down - Trimless - 380 mm - Tunable White



microPrim™

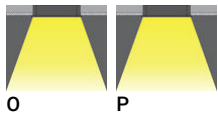
Luminaire Structure

- Extruded aluminium bended profile with powder coating
- Passive thermal management
- Stainless steel fasteners in grade 304 with zinc flake coating (ZFC)
- PMMA diffuser with Opal (UGR <19) and micro prismatic (UGR <13) options for better glare control

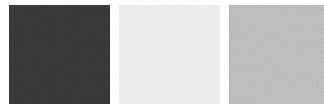
- Integral control gear
- Stainless steel brackets and screws for mounting
- Down light distribution only
- Wireless control available through Bluetooth connection

- Daylight and occupancy sensor options
- Emergency module (1 or 3 hours) is available upon request with 3 options (BASIC, SELF-TEST, PRO-DALI)

Optic

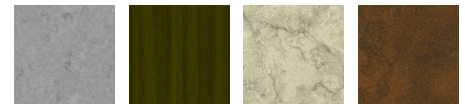


Product colour



01 - Black (RAL 9011) 03 - White (RAL 9003) 05 - Matt Silver (RAL 9006)

Special finishes upon request



SU01 - Concrete - Urban SU02 - Softscape - Urban SU03 - Stone - Urban SU04 - Corten - Urban



SW01 - Oak - Woodland SW02 - Walnut - Woodland SW03 - Pine - Woodland

ARDEN 2 (ARD-80113)

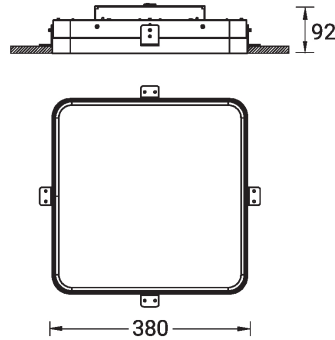
Technical information

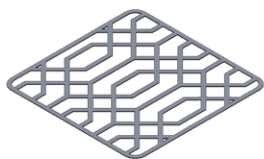
| | |
|----------------------|-----------------------|
| Material | Aluminium |
| Light source | 576 LED |
| Power | 29 W |
| Lumen | 3059 - 3475 lm |
| Efficacy | 105 - 120 lm/W |
| Driver option | Integral control gear |
| Driver | Constant current (CC) |
| Input voltage | 220-240 V 50/60 Hz |
| Optic | O, P |

| | |
|--------------------------|---|
| Optic value | 108°, 93° |
| CCT / CRI | TW (2700K - 6500K) |
| Bug | B1-U0-G1, B2-U0-G1 |
| ULR | <1% |
| ULOR | <1% |
| CIE flux code n°3 | 96, 97 |
| Dimming type | DALI |
| Product colours | Black, White, Matt Silver, Concrete - Urban, Softscape - Urban, Stone - Urban, Corten - Urban, Oak - Woodland, Walnut - Woodland, Pine - Woodland |
| Weight | 3.3 kg |

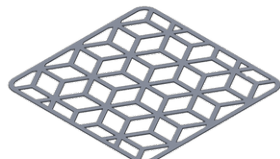
| | |
|---------------------------------|---|
| Operating temperature | -20 °C to 40 °C |
| Lens / Reflector / Optic | PMMA diffuser with Opal (UGR <19) and micro prismatic (UGR <13) options for better glare control |
| MacAdam Ellipse | 3 SDCM |
| Lifetime L90B10 (hours) | > 23,000 |
| Lifetime L80B10 (hours) | > 45,000 |
| Lifetime L80B50 (hours) | > 50,000 |
| Variants (DALI) | Compatible with EN/ IEC 60598-2-22: Suitable for emergency installations as central supply, non-maintained (Z0) |

ARD-80113

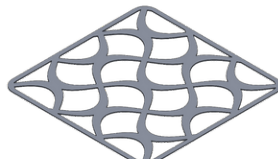


ARDEN 2 (ARD-80113)**Accessory**

Decorative pattern - Type A for
ARDEN 400 mm
A91521



Decorative pattern - Type B for
ARDEN 400 mm
A92921



Decorative pattern - Type C for
ARDEN for ARDEN 400 mm
A94321



Xpress wireless switch
A90591



Wireless bluetooth converter
A90291



DALI Control System
Control-DALI