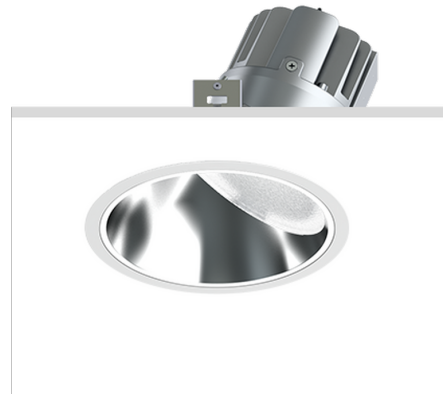
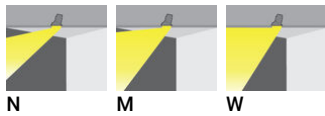
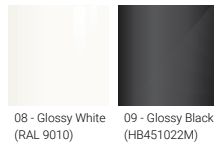


**BAKER 4** (BK-80051)**Product description**

Ø203 mm

**Luminaire Structure**

- Die-cast aluminium housing with powder coating
- Die-cast aluminium heat sink with excellent thermal management
- Aluminium reflector with white powder coating
- Remote driver (included)

**Optic****N**      **M**      **W****Product colour**

08 - Glossy White (RAL 9010)      09 - Glossy Black (HB451022M)

**BAKER 4 (BK-80051)**

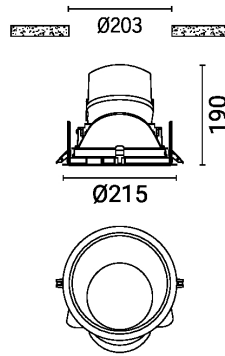
**Technical information**

<b>Material</b>	Aluminium
<b>Light source</b>	24 LED
<b>Power</b>	39 W
<b>Lumen</b>	1842 - 2271 lm
<b>Efficacy</b>	47 - 58 lm/W
<b>Driver option</b>	Remote driver (included)
<b>Driver</b>	Constant current (CC)

<b>Input voltage</b>	220-240 V 50/60 Hz
<b>Optic</b>	N, M, W
<b>Optic value</b>	19°, 25°, 34°
<b>CCT / CRI</b>	3000K CRI80, 4000K CRI80
<b>Dimming type</b>	On/Off, 1-10V, DALI
<b>Product colours</b>	Glossy White, Glossy Black
<b>Weight</b>	2.1 kg

<b>Operating temperature</b>	-20 °C to 40 °C
<b>Lens / Reflector / Optic</b>	Aluminium reflector with white powder coating
<b>MacAdam Ellipse</b>	3 SDCM
<b>Lifetime L90B10 (hours)</b>	> 120,000
<b>Lifetime L80B10 (hours)</b>	> 120,000
<b>Lifetime L80B50 (hours)</b>	> 120,000
<b>Variants (DALI)</b>	Compatible with EN/ IEC 60598-2-22: Suitable for emergency installations as central supply, non-maintained (Z0)

**BK-80051**



**BAKER 4** (BK-80051)

**Accessory**

---



DALI Control System  
**Control-DALI**

---