

**GAVLE 3** (GAV-80131)



**Product description**

Down - 60x90 mm - 2000 mm

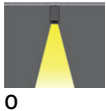


microPrim™

**Luminaire Structure**

- Extruded aluminium bended profile with powder coating
- Passive thermal management
- Stainless steel fasteners in grade 304 with zinc flake coating (ZFC)
- Opal PMMA diffuser (UGR <19) for glare control
- Integral control gear for On/Off (-ND), DALI (-DA). Remote driver is included for 1-10V (-DI)
- Steel brackets for ceiling down mounting option
- Up and down light distribution options
- Wireless control available through Bluetooth connection

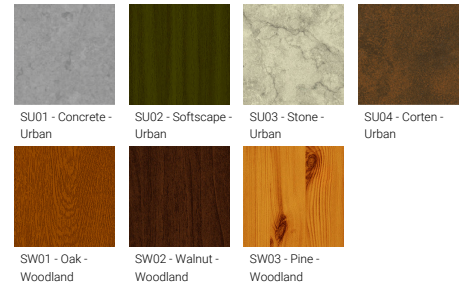
**Optic**



**Product colour**



**Special finishes upon request**



**GAVLE 3** (GAV-80131)

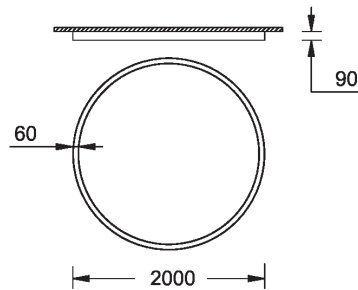
**Technical information**

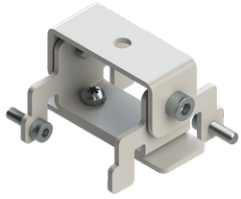
<b>Material</b>	Aluminium
<b>Light source</b>	768 LED
<b>Power</b>	98 W
<b>Lumen</b>	9597 - 10018 lm
<b>Efficacy</b>	98 - 102 lm/W
<b>Driver option</b>	Integral control gear for On/Off (-ND), DALI (-DA). Remote driver is included for 1-10V (-DI)
<b>Driver</b>	Constant current (CC)

<b>Input voltage</b>	220-240 V 50/60 Hz
<b>Optic</b>	0
<b>Optic value</b>	102°
<b>CCT / CRI</b>	3000K CRI80, 4000K CRI80
<b>Bug</b>	B3-U1-G1
<b>ULR</b>	0%, <1%
<b>ULOR</b>	0%, <1%

<b>CIE flux code n°3</b>	96
<b>Dimming type</b>	On/Off, 1-10V, DALI
<b>Product colours</b>	Black, White, Matt Silver, Concrete - Urban, Softscape - Urban, Stone - Urban, Corten - Urban, Oak - Woodland, Walnut - Woodland, Pine - Woodland
<b>Weight</b>	15.8 kg
<b>Operating temperature</b>	-20 °C to 40 °C
<b>Variants (On/Off, 1-10V, DALI)</b>	Compatible with EN/ IEC 60598-2-22: Suitable for emergency installations as central supply, non-maintained (Z0)

GAV-80131



**GAVLE 3** (GAV-80131)**Accessory**

Ceiling-mounting bracket (40  
mm profile)  
**A81381**



Wireless bluetooth converter  
**A90291**



Xpress wireless switch  
**A90591**



DALI Control System  
**Control-DALI**