

HARRIER 1 (HA-60037-A)



Product description

Integral control gear - With recessing box - Round - Aluminium frame

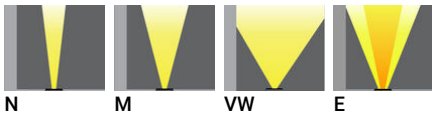


microPrim™

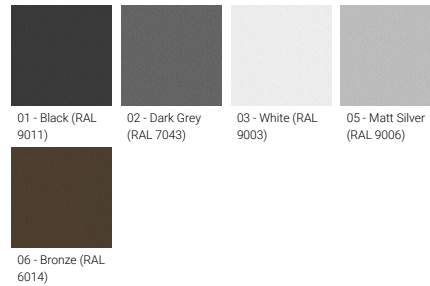
Luminaire Structure

- Die-cast aluminium housing
- Pre-treated before powder coating ensuring high corrosion resistance
- 6 mm thick front ring in grade 316 stainless steel or aluminium
- Single cable entry, through wiring upon request
- One cable gland supplied with 1 m of 3x1.0 sqmm outdoor cable
- Stainless steel fasteners in grade 316
- Durable silicone rubber gasket
- Clear toughened glass
- High-efficiency PMMA lens
- Integral control gear
- Recessing box in high-density polyethylene is included
- Suitable for walk-over with a maximum load of 200 kg

Optic



Product colour



Special finishes upon request



HARRIER 1 (HA-60037-A)

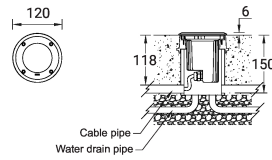
Technical information

Material	Aluminium
Light source	MR16-GU10
Power	8 W
Lumen	260 - 402 lm
Efficacy	35 - 54 lm/W
Driver option	Integral control gear

Driver	Constant current (CC)
Input voltage	220-240 V 50/60 Hz
Optic	N, M, VW, E
Optic value	13°, 22°, 58°, 12°x50°
CCT / CRI	3000K CRI95, 4000K CRI95
Dimming type	On/Off

Product colours	Black, Dark Grey, White, Matt Silver, Bronze, Concrete - Urban, Softscape - Urban, Stone - Urban, Corten - Urban, Oak - Woodland, Walnut - Woodland, Pine - Woodland
Weight	0.5 kg
Operating temperature	-20 °C to 50 °C
Cable	One cable gland supplied with 1 m of 3x1.0 sqmm outdoor cable
Through wiring	Single cable entry, through wiring upon request
Lens / Reflector / Optic	Clear toughened glass, High-efficiency PMMA lens

HA-60037-A



HARRIER 1 (HA-60037-A)**Accessory**



Connector IP68 3 Pin Power
A62591



Connector IP68 5 Pin Power +
Signal
A613191
