

TANGO 36 (TA-20011)



Product description

1 side - Round



microPrim™



DARKSKY APPROVED
Reduces light pollution
Certified by DarkSky.org

Luminaire Structure

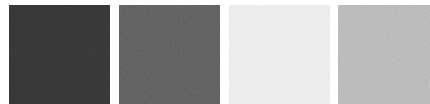
- Die-cast aluminium housing and frame
- Pre-treated before powder coating ensuring high corrosion resistance
- Single cable entry
- Stainless steel fasteners in grade 304 with zinc flake coating (ZFC)
- Durable silicone rubber gasket
- Clear toughened glass
- High-efficiency PMMA lens
- Integral control gear
- Maximum wind load resistance is 140 km/h

Optic



T2 T3 T4

Product colour

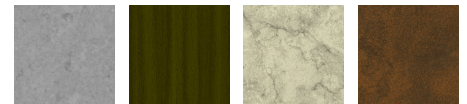


01 - Black (RAL 9011) 02 - Dark Grey (RAL 7043) 03 - White (RAL 9003) 05 - Matt Silver (RAL 9006)

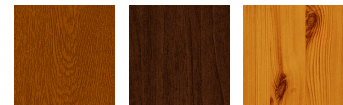


06 - Bronze (RAL 6014)

Special finishes upon request



SU01 - Concrete - Urban SU02 - Softscape - Urban SU03 - Stone - Urban SU04 - Corten - Urban



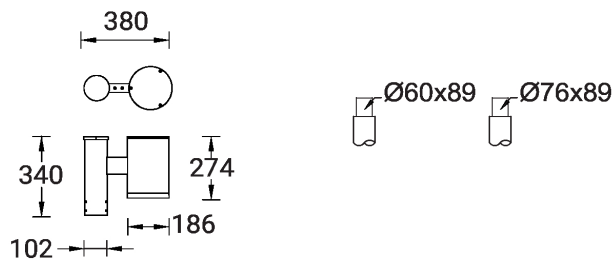
SW01 - Oak - Woodland SW02 - Walnut - Woodland SW03 - Pine - Woodland

TANGO 36 (TA-20011)

Technical information

Material	Aluminium	Optic value	138°x43°, 147°x78°, 11°x80°	Operating temperature	-20 °C to 40 °C
Light source	16 LED	CCT / CRI	3000K CRI80, 4000K CRI80	EPA (m2)	0.090
Power	35 W	Bug	B1-U0-G1	Through wiring	Single cable entry
Lumen	3476 - 3763 lm	ULR	<1%	Lens / Reflector / Optic	Clear toughened glass, High-efficiency PMMA lens
Efficacy	99 - 108 lm/W	ULOR	<1%	MacAdam Ellipse	3 SDCM
Driver option	Integral control gear	CIE flux code n°3	98	Lifetime L90B10 (hours)	> 90,000
Driver	Constant current (CC)	Dimming type	On/Off, 1-10V, DALI	Lifetime L80B10 (hours)	> 90,000
Input voltage	220-240 V 50/60 Hz	Product colours	Black, Dark Grey, White, Matt Silver, Bronze, Concrete - Urban, Softscape - Urban, Stone - Urban, Corten - Urban, Oak - Woodland, Walnut - Woodland, Pine - Woodland	Lifetime L80B50 (hours)	> 90,000
Optic	T2, T3, T4			Variants (1-10V, DALI)	Compatible with EN/ IEC 60598-2-22: Suitable for emergency installations as central supply, non-maintained (Z0)
		Weight	5.3 kg		

TA-20011



TANGO 36 (TA-20011)

Accessory



DALI Control System
Control-DALI
