

NYBRO 8 (NYB-30353)



Product description

Down (Optic) & Up (Optic 2nd) - 60x95 mm - Integrated sensor



microPrim™

Luminaire Structure

- Die-cast aluminium end-caps and extruded aluminium profile with powder coating
- Passive thermal management
- Single cable entry
- Stainless steel fasteners in grade 304 with zinc flake coating (ZFC)

- PMMA diffuser with Opal (UGR <19) and micro prismatic (UGR <13) options for better glare control
- Integral control gear
- Up and down light distribution options
- Wireless control available through Bluetooth connection

- Daylight and occupancy sensor options
- Emergency module (1 or 3 hours) is available upon request with 3 options (BASIC, SELF-TEST, PRO-DALI)

Optic



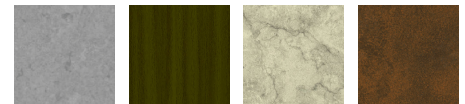
O / O P / O

Product colour



01 - Black (RAL 9011) 03 - White (RAL 9003) 05 - Matt Silver (RAL 9006)

Special finishes upon request



SU01 - Concrete - Urban SU02 - Softscape - Urban SU03 - Stone - Urban SU04 - Corten - Urban



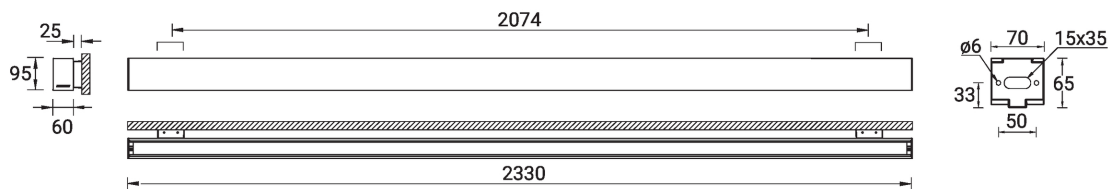
SW01 - Oak - Woodland SW02 - Walnut - Woodland SW03 - Pine - Woodland

NYBRO 8 (NYB-30353)

Technical information

| | | | | | |
|----------------------|-----------------------|--------------------------|---|--------------------------------|---|
| Material | Aluminium | Optic | O, P | Operating temperature | -20 °C to 40 °C |
| Light source | 276 & 276 LED | Optic value | Opal, Micro-prismatic | MacAdam Ellipse | 3 SDCM |
| Power | 146 W | Optic (2nd) | 0 | Lifetime L90B10 (hours) | > 23,000 |
| Lumen | 17721 lm | Optic (2nd) value | Opal | Lifetime L80B10 (hours) | > 45,000 |
| Efficacy | 121 lm/W | CCT / CRI | 3000K CRI80, 4000K CRI80 | Lifetime L80B50 (hours) | > 50,000 |
| Driver option | Integral control gear | Dimming type | DALI | Variants (DALI) | Compatible with EN/ IEC 60598-2-22: Suitable for emergency installations as central supply, non-maintained (Z0) |
| Driver | Constant current (CC) | Product colours | Black, White, Matt Silver, Concrete - Urban, Softscape - Urban, Stone - Urban, Corten - Urban, Oak - Woodland, Walnut - Woodland, Pine - Woodland | | |
| Input voltage | 220-240 V 50/60 Hz | Weight | 9.0 kg | | |

NYB-30353



NYBRO 8 (NYB-30353)**Accessory**



Continuous-coupler bracket
(60/70 mm Down & 60 mm
Down & Up profile)
A81581
