

**STEAMER 11 (SE-90022-SO-80)**



**Product description**

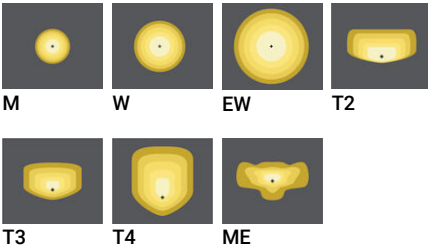
Made to order for 80 W Vertical solar PV pole



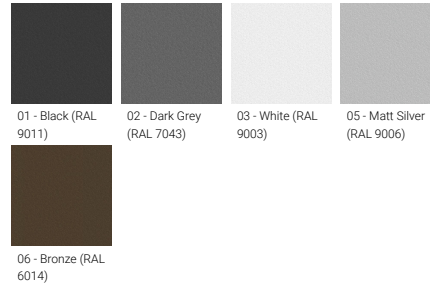
**Luminaire Structure**

- Clear toughened glass
- High-efficiency PMMA lens
- Integral control gear

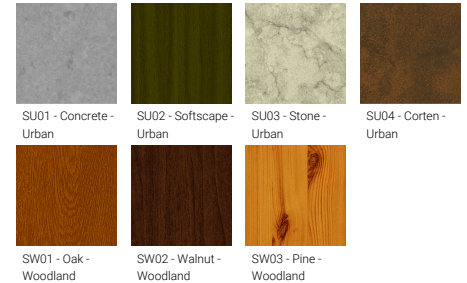
**Optic**



**Product colour**



**Special finishes upon request**



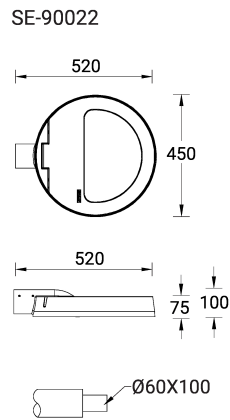
**STEAMER 11 (SE-90022-SO-80)**

**Technical information**

<b>Material</b>	Aluminium
<b>Light source</b>	48 LED
<b>Power</b>	80 W
<b>Lumen</b>	8862 - 10821 lm
<b>Efficacy</b>	111 - 135 lm/W
<b>Driver option</b>	Integral control gear
<b>Driver</b>	Constant current (CC)

<b>Input voltage</b>	1100 mA, 72 VDC
<b>Optic</b>	M, W, EW, T2, T3, T4, ME
<b>Optic value</b>	30°, 57°, 105°x115°, 136°x51°, 119°x86°, 102°x74°, 137°x58°
<b>CCT / CRI</b>	2700K CRI80, 3000K CRI80, 4000K CRI80
<b>Bug</b>	B2-U0-G2, B3-U0-G0, B4-U0-G1
<b>ULR</b>	<1%
<b>ULOR</b>	<1%

<b>CIE flux code n°3</b>	97, 98, 99
<b>Dimming type</b>	Dusk to Dawn, 2 Step dimming with motion sensor override, Solar Custom
<b>Product colours</b>	Black, Dark Grey, White, Matt Silver, Bronze, Concrete - Urban, Softscape - Urban, Stone - Urban, Corten - Urban, Oak - Woodland, Walnut - Woodland, Pine - Woodland
<b>Weight</b>	11.2 kg
<b>Operating temperature</b>	-20 °C to 40 °C
<b>Lens / Reflector / Optic</b>	Clear toughened glass, High-efficiency PMMA lens



**STEAMER 11 (SE-90022-SO-80)****Accessory**

Remote solar charge controller  
for Solar Integrated Bollards and  
Vertical Solar PV poles  
**A92691**



Vertical solar PV pole 3  
**SOL-20021**



Vertical solar PV pole 4  
**SOL-20031**



Vertical solar PV pole 5  
**SOL-20041**



Vertical solar PV pole 7  
**SOL-20061**



IoT Module  
**A95591**



Auto dimming feature  
**auto-dim**