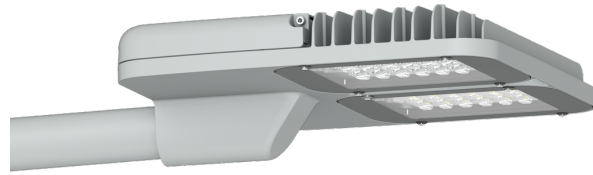


POWERMISSION 3 (P039-LM107)



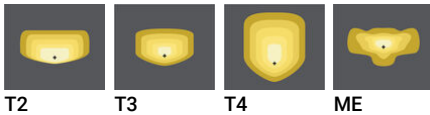
Luminaire Structure

- Die-cast aluminium housing
- Pre-treated before powder coating ensuring high corrosion resistance
- Thermal heat dissipation body

- Stainless steel fasteners in grade 304 with zinc flake coating (ZFC)
- Durable silicone rubber gasket
- Clear toughened glass

- Integral control gear
- Surge protection 10kV

Optic



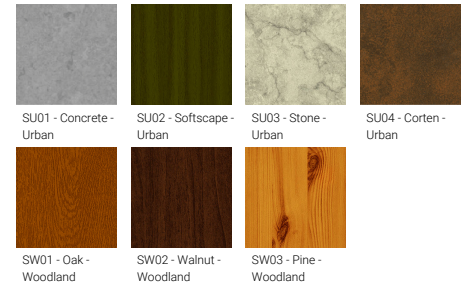
T2 T3 T4 ME

Product colour



01 - Black (RAL 9011) 02 - Dark Grey (RAL 7043) 03 - White (RAL 9003) 05 - Matt Silver (RAL 9006)
06 - Bronze (RAL 6014)

Special finishes upon request



SU01 - Concrete - Urban SU02 - Softscape - Urban SU03 - Stone - Urban SU04 - Corten - Urban
SW01 - Oak - Woodland SW02 - Walnut - Woodland SW03 - Pine - Woodland

POWERMISSION 3 (PO39-LM107)
Technical information

Material	Aluminium	Driver	Constant current (CC)	Product colours	Black, Dark Grey, White, Matt Silver, Bronze, Concrete - Urban, Softscape - Urban, Stone - Urban, Corten - Urban, Oak - Woodland, Walnut - Woodland, Pine - Woodland
Light source	48 LED	Input voltage	220-240 V 50/60 Hz	Weight	10.6 kg
Power	106 W	Optic	T2, T3, T4, ME	Operating temperature	-20 °C to 40 °C
Lumen	9203 - 10725 lm	Optic value	145°x54°, 138°x73°, 96°x75°, 140°x58°	Lens / Reflector / Optic	Clear toughened glass
Efficacy	60 - 70 lm/W	CCT / CRI	3000K CRI80, 4000K CRI80	Variants (On/Off)	Compatible with EN/ IEC 60598-2-22: Suitable for emergency installations as central supply, non-maintained (Z0)
Driver option	Integral control gear	Dimming type	On/Off, 1-10V, DALI		