

LIGHT LINEAR VT 2 (VT-10012)



Product description

200x80 mm - 1000 mm - 2 sides

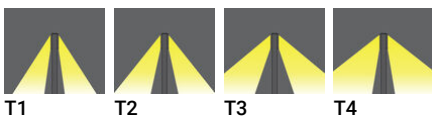


microPrim™

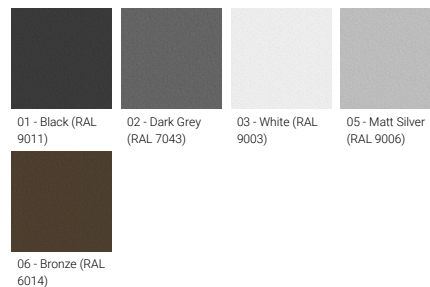
Luminaire Structure

- Die-cast aluminium housing and frame
- Extruded aluminium column
- Pre-treated before powder coating ensuring high corrosion resistance
- Single cable entry
- One IP68 connector supplied with 0.2 m of 3x1.0 sqmm outdoor cable
- Stainless steel fasteners in grade 304 with zinc flake coating (ZFC)
- Durable silicone rubber gasket
- Clear toughened glass
- High-efficiency PMMA lens
- Integral control gear

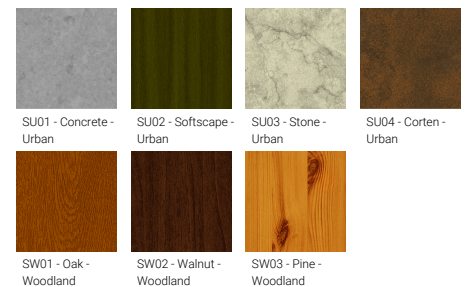
Optic



Product colour



Special finishes upon request



LIGHT LINEAR VT 2 (VT-10012)

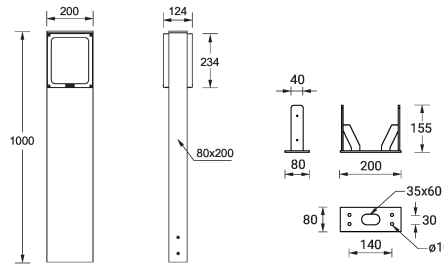
Technical information

Material	Aluminium
Light source	2 x 24LED
Power	104 W
Lumen	7948 - 10574 lm
Efficacy	76 - 102 lm/W
Driver option	Integral control gear
Driver	Constant current (CC)
Input voltage	220-240 V 50/60 Hz
Optic	T1, T2, T3, T4

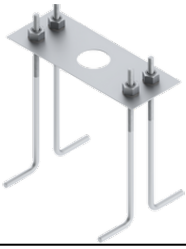
Optic value	104°x103°, 138°x134°, 171°x97°, 113°x45°
CCT / CRI	3000K CRI80, 4000K CRI80
Bug	B3-U4-G3, B3-U4-G4, B3-U5-G5
ULR	15%, 16%, 20%
ULOR	15%, 16%, 20%
CIE flux code n°3	69, 79, 80, 83
Dimming type	On/Off, 1-10V, DALI
Product colours	Black, Dark Grey, White, Matt Silver, Bronze, Concrete - Urban, Softscape - Urban, Stone - Urban, Corten - Urban, Oak - Woodland, Walnut - Woodland, Pine - Woodland
Weight	10.8 kg

Operating temperature	-20 °C to 50 °C
Cable	One IP68 connector supplied with 0.2 m of 3x1.0 sqmm outdoor cable
Through wiring	Single cable entry
Lens / Reflector / Optic	Clear toughened glass, High-efficiency PMMA lens
MacAdam Ellipse	3 SDCM
Lifetime L90B10 (hours)	> 90,000
Lifetime L80B10 (hours)	> 90,000
Lifetime L80B50 (hours)	> 90,000
Variants (On/Off, 1-10V, DALI)	Compatible with EN/ IEC 60598-2-22: Suitable for emergency installations as central supply, non-maintained (ZO)

VT-10012



LIGHT LINEAR VT 2 (VT-10012)**Accessory**



Anchor bolt
A11191



DALI Control System
Control-DALI