

LADOR 13 (LD-20001)



Product description

Supplied with specific 4 m cylindrical, straight aluminium pole: APD140140-LD



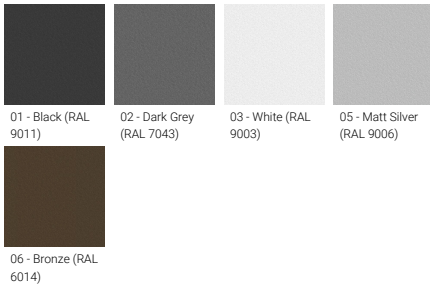
microPrim™



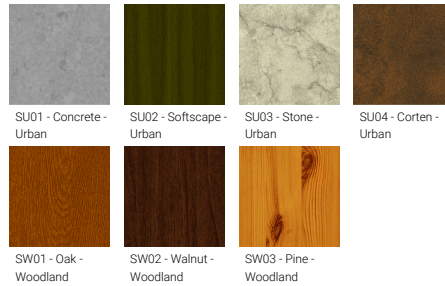
Luminaire Structure

- Die-cast aluminium housing
- Pre-treated before powder coating ensuring high corrosion resistance
- Thermal heat dissipation body
- Single cable entry, through wiring upon request
- Stainless steel fasteners in grade 304 with zinc flake coating (ZFC)
- Durable silicone rubber gasket
- High-efficiency PMMA lens
- Clear toughened glass
- Integral control gear
- Maximum wind load resistance is 140 km/h
- Surge protection 10kV

Product colour



Special finishes upon request



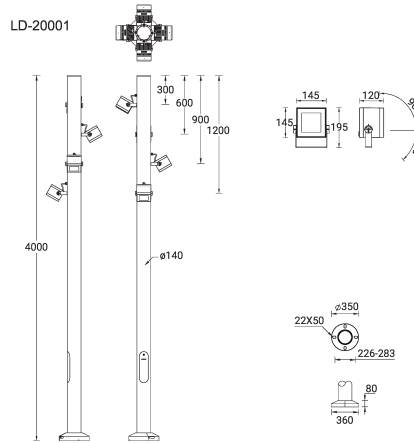
LADOR 13 (LD-20001)

Technical information

Material	Aluminium
Light source	4 x 16 LED
Power	140 W
Lumen	13052 - 16440 lm
Efficacy	93 - 117 lm/W
Driver option	Integral control gear
Driver	Constant current (CC)

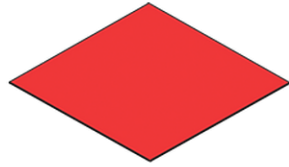
Input voltage	220-240 V 50/60 Hz
Optic	N, M, W, VW, E
Optic value	10°, 16°, 33°, 72°, 43°x11°
CCT / CRI	3000K CRI80, 4000K CRI80
Bug	B2-U0-G0, B3-U0-G0
ULR	<1%
ULOR	<1%

CIE flux code n°3	100
Dimming type	On/Off, 1-10V, DALI
Product colours	Black, Dark Grey, White, Matt Silver, Bronze, Concrete - Urban, Softscape - Urban, Stone - Urban, Corten - Urban, Oak - Woodland, Walnut - Woodland, Pine - Woodland
Weight	20.8 kg
Operating temperature	-20 °C to 40 °C
Lens / Reflector / Optic	High-efficiency PMMA lens, Clear toughened glass
Variants (1-10V, DALI)	Compatible with EN/ IEC 60598-2-22: Suitable for emergency installations as central supply, non-maintained (Z0)

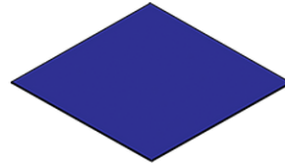


LADOR 13 (LD-20001)**Accessory**

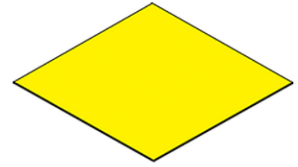
Anti-glare visor
A53131



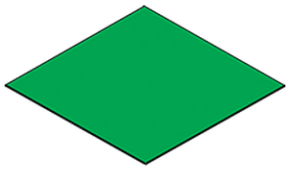
Colour filter (Red)
A51416



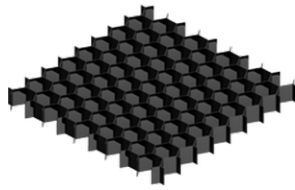
Colour filter (Blue)
A51417



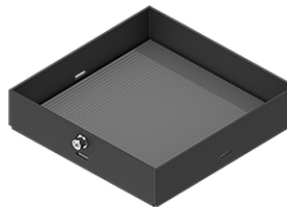
Colour filter (Yellow)
A51418



Colour filter (Green)
A51419



Honeycomb louvre
A52121



Linear spread lens
A51414



Root mount kit
A20691

Please contact the factory for technical details if you wish to use Anti-glare accessories, Colour filters, Lenses and slip glasses in combination.

Pole (required)

4 m - Cylindrical, straight
aluminium pole for LADOR
APD140140-LD