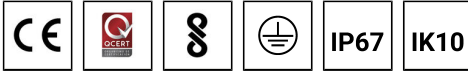
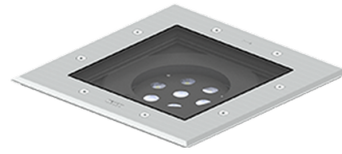


KIOS 6 (KI-60588)**Product description**

With recessing box / driver - Embross frame - RGBW

**Luminaire Structure**

- Die-cast aluminium housing
- Pre-treated before powder coating ensuring high corrosion resistance
- 5.5 mm thick front ring in grade 316 stainless steel
- Single cable entry, through wiring upon request
- Stainless steel fasteners in grade 316
- Durable silicone rubber gasket
- Clear toughened glass
- High-efficiency PMMA lens
- Integral control gear
- Recessing box in high-density polyethylene is included
- Suitable for drive-over with a maximum load of 2000 kg
- Vehicles with pneumatic tires can drive over the luminaire but the speed must not exceed 50 km/h
- Load is transferred by the housing to the foundation
- The distance between the luminaire and the illuminated surface should be at least 0.5 m

Optic**Product colour**

KIOS 6 (KI-60588)

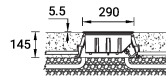
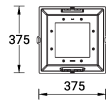
Technical information

Material	Stainless Steel
Light source	7 LED
Power	29 W
Lumen	1063 - 1299 lm
Efficacy	37 - 45 lm/W
Driver option	Integral control gear
Driver	Constant current (CC)

Input voltage	220-240 V 50/60 Hz
Optic	N, M, E
Optic value	21°, 35°, 26°x48°
CCT / CRI	RGBW30, RGBW40
Bug	B0-U5-G0
ULR	100%
ULOR	100%

Dimming type	DMX, DMX/RDM
Product colours	Stainless Steel
Weight	8.4 kg
Operating temperature	-20 °C to 40 °C
Through wiring	Single cable entry, through wiring upon request
Lens / Reflector / Optic	Clear toughened glass, High-efficiency PMMA lens
Variants (DMX/RDM)	Compatible with EN/ IEC 60598-2-22: Suitable for emergency installations as central supply, non-maintained (Z0)

KI-60588



KIOS 6 (KI-60588)

Accessory



DMX Control System
Control-DMX



DMX/RDM Control System
Control-DMX-RDM
