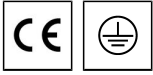


**AUBAINE 3 (AUB-20021)**



**Product description**

2 sides - Supplied with specific 9.260 m square, straight galvanised steel pole: SPC290150-AUB-20021-9030, SPC290150-AUB-20021-9040 1050 W



microVos microPrim™

**Luminaire Structure**

- Formed sheet aluminium housing
- Pre-treated before powder coating ensuring high corrosion resistance
- Single cable entry
- One IP68 connector supplied with 0.3 m of 3x1.0 sqmm outdoor cable
- Stainless steel fasteners in grade 304 with zinc flake coating (ZFC)

- Durable silicone rubber gasket
- Clear toughened glass
- Opal toughened glass diffuser for around the pole
- Integral control gear
- Maximum wind load resistance is 100 km/h

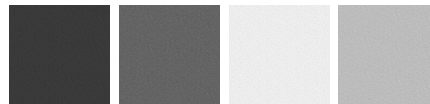
- Surge protection 10kV
- Square, straight galvanised steel pole
- Aluminum plates cover all 4 sides of the post at the bottom

**Optic**

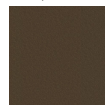


T2 T3 T4

**Product colour**

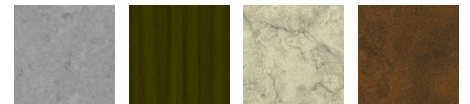


01 - Black (RAL 9011) 02 - Dark Grey (RAL 7043) 03 - White (RAL 9003) 05 - Matt Silver (RAL 9006)



06 - Bronze (RAL 6014)

**Special finishes upon request**



SU01 - Concrete - Urban SU02 - Softscape - Urban SU03 - Stone - Urban SU04 - Corten - Urban



SW01 - Oak - Woodland



SW02 - Walnut - Woodland



SW03 - Pine - Woodland

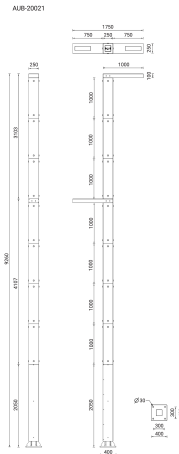
**AUBAINE 3 (AUB-20021)**

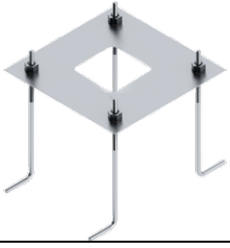
**Technical information**

<b>Material</b>	Aluminium
<b>Light source</b>	2 x 24 LED - LED tape
<b>Power</b>	108 W
<b>Lumen</b>	11002 - 12386 lm
<b>Efficacy</b>	102 - 115 lm/W
<b>Driver option</b>	Integral control gear
<b>Driver</b>	Constant current (CC)
<b>Input voltage</b>	220-240 V 50/60 Hz
<b>Optic</b>	T2, T3, T4

<b>Optic value</b>	140°x47°, 134°x68°, 92°x78°
<b>CCT / CRI</b>	3000K CRI80, 4000K CRI80
<b>Bug</b>	B1-U0-G1
<b>ULR</b>	<1%
<b>ULOR</b>	<1%
<b>CIE flux code n°3</b>	98
<b>Dimming type</b>	On/Off, 1-10V, DALI
<b>Product colours</b>	Black, Dark Grey, White, Matt Silver, Bronze, Concrete - Urban, Softscape - Urban, Stone - Urban, Corten - Urban, Oak - Woodland, Walnut - Woodland, Pine - Woodland
<b>Weight</b>	342.0 kg

<b>EPA (m2)</b>	0.175
<b>Cable</b>	One IP68 connector supplied with 0.3 m of 3x1.0 sqmm outdoor cable
<b>Through wiring</b>	Single cable entry
<b>Lens / Reflector / Optic</b>	Clear toughened glass, Opal toughened glass diffuser for around the pole
<b>MacAdam Ellipse</b>	3 SDCM
<b>Lifetime L90B10 (hours)</b>	> 90,000
<b>Lifetime L80B10 (hours)</b>	> 90,000
<b>Lifetime L80B50 (hours)</b>	> 90,000
<b>Variants (On/Off, 1-10V, DALI)</b>	Compatible with EN/ IEC 60598-2-22: Suitable for emergency installations as central supply, non-maintained (Z0)



**AUBAINE 3 (AUB-20021)****Accessory**

Anchor bolt  
**A23491**



DALI Control System  
**Control-DALI**

**Pole (required)**

3000K - 1050 W - 9.260 m -  
Square, straight galvanised steel  
with frosted glass pole for  
AUBAINE  
**SPC290150-AUB-20021-9030**



4000K - 1050 W - 9.260 m -  
Square, straight galvanised steel  
with frosted glass pole for  
AUBAINE  
**SPC290150-AUB-20021-9040**