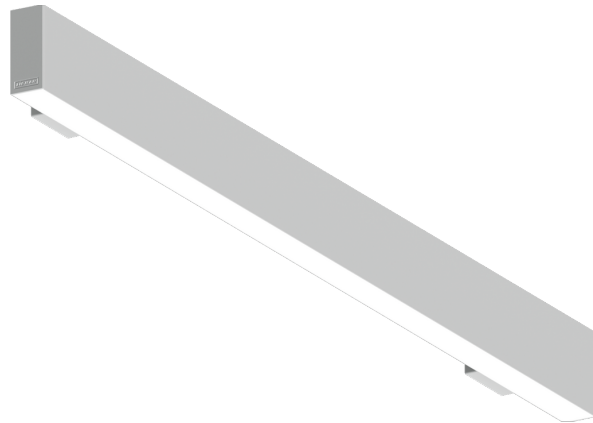


**NYBRO 8 (NYB-30365)**



**Product description**

Down (Optic) & Up (Optic 2nd) - 60x95 mm - RGBW



microPrim™

**Luminaire Structure**

- Die-cast aluminium end-caps and extruded aluminium profile with powder coating
- Passive thermal management
- Single cable entry
- Stainless steel fasteners in grade 304 with zinc flake coating (ZFC)

- PMMA diffuser with Opal (UGR <19) and micro prismatic (UGR <13) options for better glare control
- Integral control gear
- Up and down light distribution options
- Wireless control available through Bluetooth connection

- Daylight and occupancy sensor options
- Emergency module (1 or 3 hours) is available upon request with 3 options (BASIC, SELF-TEST, PRO-DALI)

**Optic**



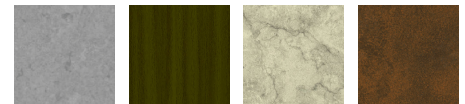
O/O P/O

**Product colour**



01 - Black (RAL 9011)    03 - White (RAL 9003)    05 - Matt Silver (RAL 9006)

**Special finishes upon request**



SU01 - Concrete - Urban    SU02 - Softscape - Urban    SU03 - Stone - Urban    SU04 - Corten - Urban



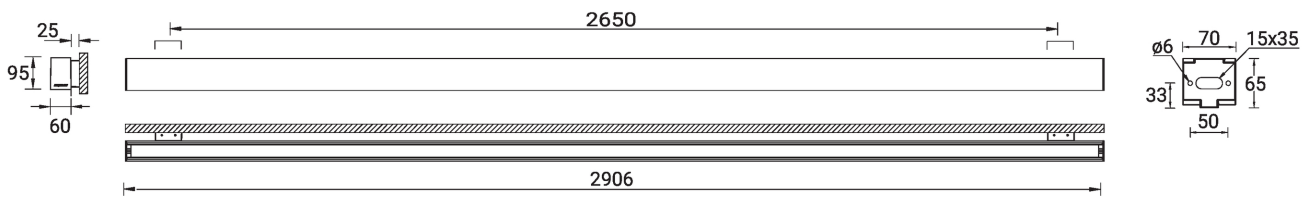
SW01 - Oak - Woodland    SW02 - Walnut - Woodland    SW03 - Pine - Woodland

**NYBRO 8 (NYB-30365)**

**Technical information**

<b>Material</b>	Aluminium	<b>Driver</b>	Constant current (CC)	<b>CCT / CRI</b>	RGBW40
<b>Light source</b>	480 & 464 LED	<b>Input voltage</b>	220-240 V 50/60 Hz	<b>Dimming type</b>	Bluetooth
<b>Power</b>	206 W	<b>Optic</b>	O, P	<b>Product colours</b>	Black, White, Matt Silver, Concrete - Urban, Softscape - Urban, Stone - Urban, Corten - Urban, Oak - Woodland, Walnut - Woodland, Pine - Woodland
<b>Lumen</b>	14278 lm	<b>Optic value</b>	Opal, Micro-prismatic		
<b>Efficacy</b>	69 lm/W	<b>Optic (2nd)</b>	O		
<b>Driver option</b>	Integral control gear	<b>Optic (2nd) value</b>	Opal	<b>Weight</b>	11.1 kg
				<b>Operating temperature</b>	-20 °C to 40 °C

NYB-30365



**NYBRO 8** (NYB-30365)**Accessory**

---



---

Continuous-coupler bracket  
(60/70 mm Down & 60 mm  
Down & Up profile)  
**A81581**

---



---

Xpress wireless switch  
**A90591**

---