

**BILLUND 1** (BIU-90041-LC)



**Product description**

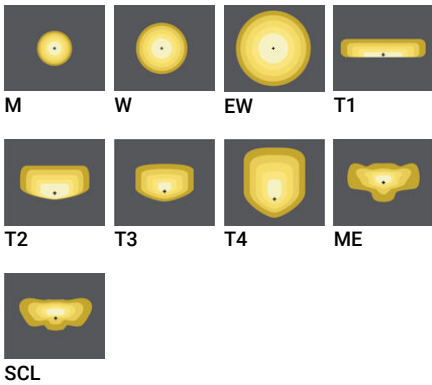
Small - LIGHTCONNECT™



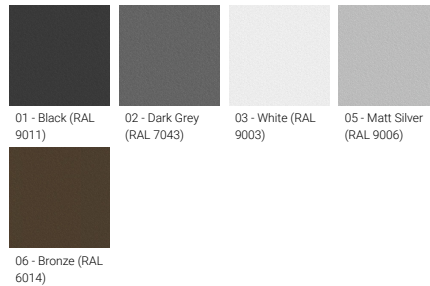
**Luminaire Structure**

- Die-cast aluminium housing
- Pre-treated before powder coating ensuring high corrosion resistance
- Thermal heat dissipation body
- Single cable entry
- One IP68 connector supplied with 0.3 m of 3x1.0 sqmm outdoor cable
- Stainless steel fasteners in grade 304 with zinc flake coating (ZFC)
- Durable silicone rubber gasket
- Clear toughened glass
- High-efficiency polycarbonate lens
- Integral control gear
- Surge protection 10kV
- Constant lumen output (CLO) and Night-time dimming options

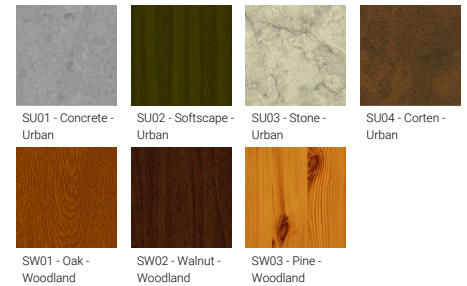
**Optic**



**Product colour**



**Special finishes upon request**

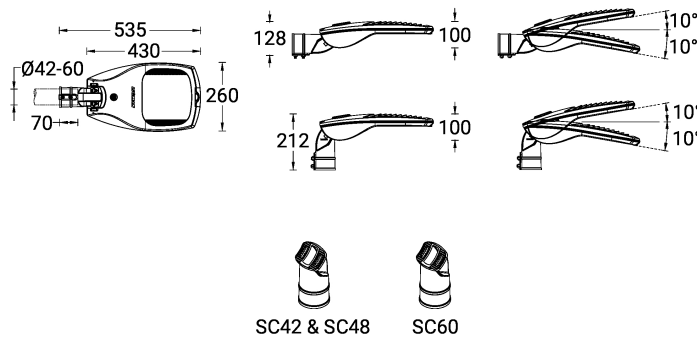


**BILLUND 1 (BIU-90041-LC)**

**Technical information**

<b>Material</b>	Aluminium	<b>Optic value</b>	31°, 56°, 106°x113°, 149°x72°, 137°x51°, 126°x89°, 103°x74°, 138°x56°, 151°x65°	<b>Operating temperature</b>	-20 °C to 40 °C
<b>Light source</b>	12 LED	<b>CCT / CRI</b>	2700K CRI70, 2700K CRI80, 3000K CRI70, 3000K CRI80, 4000K CRI70, 4000K CRI80	<b>EPA (m2)</b>	0.040
<b>Power</b>	28 W	<b>Bug</b>	B1-U0-G1, B2-U0-G0	<b>Cable</b>	One IP68 connector supplied with 0.3 m of 3x1.0 sqmm outdoor cable
<b>Lumen</b>	2591 - 3633 lm	<b>ULR</b>	<1%	<b>Through wiring</b>	Single cable entry
<b>Efficacy</b>	93 - 130 lm/W	<b>ULOR</b>	<1%	<b>Lens / Reflector / Optic</b>	Clear toughened glass, High-efficiency polycarbonate lens
<b>Driver option</b>	Integral control gear	<b>CIE flux code n°3</b>	95, 96, 97, 98, 99	<b>MacAdam Ellipse</b>	3 SDCM
<b>Driver</b>	Constant current (CC)	<b>Dimming type</b>	DALI	<b>Lifetime L90B10 (hours)</b>	> 90,000
<b>Input voltage</b>	220-240 V 50/60 Hz	<b>Product colours</b>	Black, Dark Grey, White, Matt Silver, Bronze, Concrete - Urban, Softscape - Urban, Stone - Urban, Corten - Urban, Oak - Woodland, Walnut - Woodland, Pine - Woodland	<b>Lifetime L80B10 (hours)</b>	> 90,000
<b>Optic</b>	M, W, EW, T1, T2, T3, T4, ME, SCL	<b>Weight</b>	6.1 kg	<b>Lifetime L80B50 (hours)</b>	> 90,000

BIU-90041



**BILLUND 1** (BIU-90041-LC)**Accessory**

NEMA 7 socket  
**A90891**



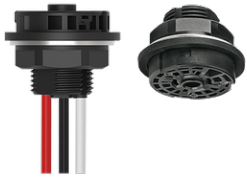
Zhaga Book 18 socket (Up)  
**A90991-U**



Motion sensor - PIR - DALI - Up  
to 3 m  
**A91691-L2**



Motion sensor - PIR - DALI - Up  
to 12 m  
**A91691-L7**



Zhaga Book 18 socket (Down)  
**A90991-D**



DALI Control System  
**Control-DALI**