

**NYBRO 8 (NYB-30342)**



**Product description**

Down (Optic) & Up (Optic 2nd) - 60x95 mm



microPrim™

**Luminaire Structure**

- Die-cast aluminium end-caps and extruded aluminium profile with powder coating
- Passive thermal management
- Single cable entry
- Stainless steel fasteners in grade 304 with zinc flake coating (ZFC)

- PMMA diffuser with Opal (UGR <19) and micro prismatic (UGR <13) options for better glare control
- Integral control gear
- Up and down light distribution options
- Wireless control available through Bluetooth connection

- Daylight and occupancy sensor options
- Emergency module (1 or 3 hours) is available upon request with 3 options (BASIC, SELF-TEST, PRO-DALI)

**Optic**



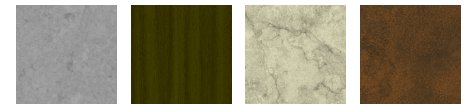
O / O      P / O

**Product colour**

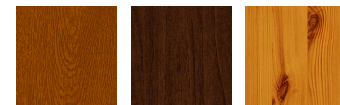


01 - Black (RAL 9011)      03 - White (RAL 9003)      05 - Matt Silver (RAL 9006)

**Special finishes upon request**



SU01 - Concrete - Urban      SU02 - Softscape - Urban      SU03 - Stone - Urban      SU04 - Corten - Urban



SW01 - Oak - Woodland      SW02 - Walnut - Woodland      SW03 - Pine - Woodland

**NYBRO 8 (NYB-30342)**

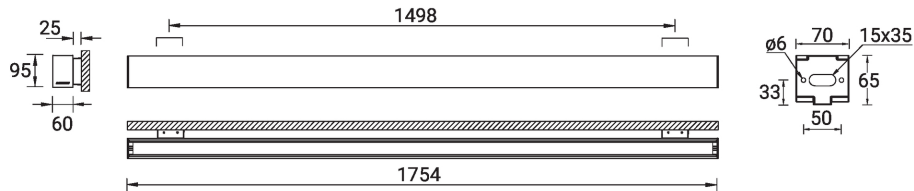
**Technical information**

<b>Material</b>	Aluminium
<b>Light source</b>	216 & 204 LED
<b>Power</b>	110 W
<b>Lumen</b>	11922 - 13441 lm
<b>Efficacy</b>	108 - 122 lm/W
<b>Driver option</b>	Integral control gear
<b>Driver</b>	Constant current (CC)
<b>Input voltage</b>	220-240 V 50/60 Hz

<b>Optic</b>	O, P
<b>Optic value</b>	Opal, Micro-prismatic
<b>Optic (2nd)</b>	O
<b>Optic (2nd) value</b>	Opal
<b>CCT / CRI</b>	3000K CRI80, 4000K CRI80
<b>Dimming type</b>	On/Off, 1-10V, DALI
<b>Product colours</b>	Black, White, Matt Silver, Concrete - Urban, Softscape - Urban, Stone - Urban, Corten - Urban, Oak - Woodland, Walnut - Woodland, Pine - Woodland
<b>Weight</b>	6.9 kg

<b>Operating temperature</b>	-20 °C to 40 °C
<b>MacAdam Ellipse</b>	3 SDCM
<b>Lifetime L90B10 (hours)</b>	> 23,000
<b>Lifetime L80B10 (hours)</b>	> 45,000
<b>Lifetime L80B50 (hours)</b>	> 50,000
<b>Variants (On/Off, 1-10V, DALI)</b>	Compatible with EN/ IEC 60598-2-22: Suitable for emergency installations as central supply, non-maintained (Z0)

NYB-30342



**NYBRO 8** (NYB-30342)**Accessory**

---



---

Continuous-coupler bracket  
(60/70 mm Down & 60 mm  
Down & Up profile)  
**A81581**

---



---

Xpress wireless switch  
**A90591**

---



---

Wireless bluetooth converter  
**A90291**

---