

NYBRO 2 (NYB-80126)



Product description

Down - 70x80 mm - 1188 mm - RGBW



microPrim™

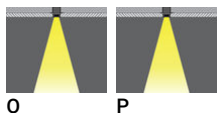
Luminaire Structure

- Die-cast aluminium end-caps and extruded aluminium profile with powder coating
- Passive thermal management
- Stainless steel fasteners in grade 304 with zinc flake coating (ZFC)
- PMMA diffuser with Opal (UGR <19) and micro prismatic (UGR <13) options for better glare control

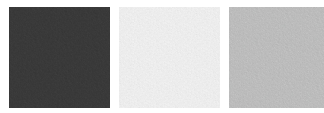
- Integral control gear
- Stainless steel brackets and screws for mounting
- Down light distribution only
- Wireless control available through Bluetooth connection

- Daylight and occupancy sensor options
- Emergency module (1 or 3 hours) is available upon request with 3 options (BASIC, SELF-TEST, PRO-DALI)

Optic

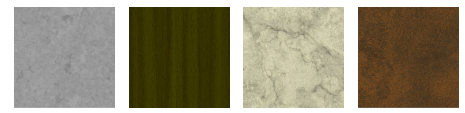


Product colour

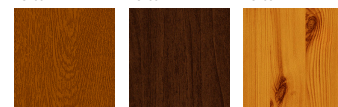


01 - Black (RAL 9011) 03 - White (RAL 9003) 05 - Matt Silver (RAL 9006)

Special finishes upon request



SU01 - Concrete - Urban SU02 - Softscape - Urban SU03 - Stone - Urban SU04 - Corten - Urban



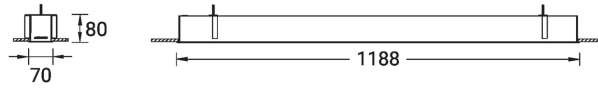
SW01 - Oak - Woodland SW02 - Walnut - Woodland SW03 - Pine - Woodland

NYBRO 2 (NYB-80126)

Technical information

Material	Aluminium	Driver option	Integral control gear	CCT / CRI	RGBW40
Light source	192 LED	Driver	Constant current (CC)	Dimming type	Bluetooth
Power	42 W	Input voltage	220-240 V 50/60 Hz	Product colours	Black, White, Matt Silver, Concrete - Urban, Softscape - Urban, Stone - Urban, Corten - Urban, Oak - Woodland, Walnut - Woodland, Pine - Woodland
Lumen	2000 lm	Optic	O, P		
Efficacy	48 lm/W	Optic value	Opal, Micro-prismatic		
				Weight	3.9 kg
				Operating temperature	-20 °C to 40 °C

NYB-80126



NYBRO 2 (NYB-80126)**Accessory**



Continuous-coupler bracket
(60/70 mm Down & 60 mm
Down & Up profile)
A81581



Xpress wireless switch
A90591
