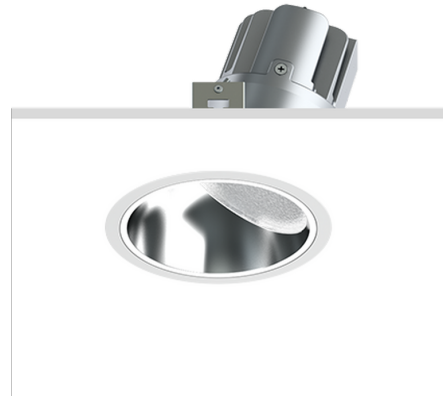
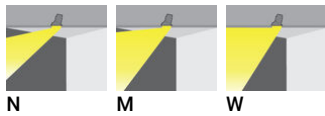
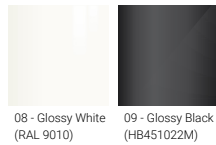


BAKER 3 (BK-80041)**Product description**

Ø160 mm

**Luminaire Structure**

- Die-cast aluminium housing with powder coating
- Die-cast aluminium heat sink with excellent thermal management
- Aluminium reflector with white powder coating
- Remote driver (included)

Optic**Product colour**

BAKER 3 (BK-80041)

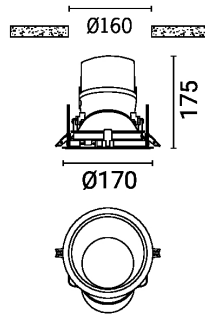
Technical information

Material	Aluminium
Light source	18 LED
Power	29 W
Lumen	1319 - 1695 lm
Efficacy	45 - 58 lm/W
Driver option	Remote driver (included)
Driver	Constant current (CC)

Input voltage	220-240 V 50/60 Hz
Optic	N, M, W
Optic value	19°, 25°, 34°
CCT / CRI	3000K CRI80, 4000K CRI80
Dimming type	On/Off, 1-10V, DALI
Product colours	Glossy White, Glossy Black
Weight	1.5 kg

Operating temperature	-20 °C to 40 °C
Lens / Reflector / Optic	Aluminium reflector with white powder coating
MacAdam Ellipse	3 SDCM
Lifetime L90B10 (hours)	> 120,000
Lifetime L80B10 (hours)	> 120,000
Lifetime L80B50 (hours)	> 120,000
Variants (DALI)	Compatible with EN/ IEC 60598-2-22: Suitable for emergency installations as central supply, non-maintained (Z0)

BK-80041



BAKER 3 (BK-80041)

Accessory



DALI Control System
Control-DALI
