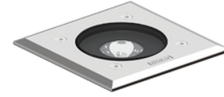


HARRIER 2 (HA-60396-S)**Product description**

With remote box IP-rated / remote driver / recessing box - Square - Stainless steel frame

**Luminaire Structure**

- Die-cast aluminium housing
- Pre-treated before powder coating ensuring high corrosion resistance
- 6 mm thick front ring in grade 316 stainless steel or aluminium
- Single cable entry, through wiring upon request
- Stainless steel fasteners in grade 316
- Durable silicone rubber gasket
- Clear toughened glass
- High-efficiency PMMA lens
- Remote driver (included)
- Recessing box in high-density polyethylene is included
- Suitable for walk-over with a maximum load of 200 kg

Optic

VN

Product colour

00 - Stainless Steel

HARRIER 2 (HA-60396-S)

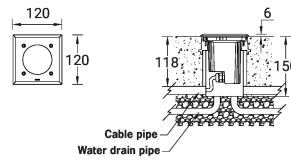
Technical information

Material	Stainless Steel
Light source	1 LED
Power	8 W
Lumen	548 - 555 lm
Efficacy	69 lm/W
Driver option	Remote driver (included)
Driver	Constant current (CC)
Input voltage	220-240 V 50/60 Hz
Optic	VN

Optic value	8°
CCT / CRI	3000K CRI80, 4000K CRI80
Bug	B0-U3-G0, B0-U4-G0
ULR	100%
ULOR	100%
Dimming type	On/Off, 1-10V, DALI
Product colours	Stainless Steel
Weight	0.7 kg
Operating temperature	-20 °C to 50 °C

Through wiring	Single cable entry, through wiring upon request
Lens / Reflector / Optic	Clear toughened glass, High-efficiency PMMA lens
MacAdam Ellipse	3 SDCM
Lifetime L90B10 (hours)	> 109,000
Lifetime L80B10 (hours)	> 109,000
Lifetime L80B50 (hours)	> 109,000
Variants (On/Off, 1-10V, DALI)	Compatible with EN/ IEC 60598-2-22: Suitable for emergency installations as central supply, non-maintained (Z0)

HA-60396-S



HARRIER 2 (HA-60396-S)**Accessory**



Connector IP68 3 Pin Power
A62591



DALI Control System
Control-DALI



Connector IP68 5 Pin Power +
Signal
A613191
