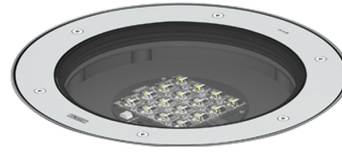


KIOS 11 (KI-60657)



Product description

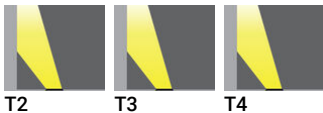
With recessing box / driver - Flat frame



Luminaire Structure

- Die-cast aluminium housing
- Pre-treated before powder coating ensuring high corrosion resistance
- 5.5 mm thick front ring in grade 316 stainless steel
- Single cable entry, through wiring upon request
- Stainless steel fasteners in grade 316
- Durable silicone rubber gasket
- Clear toughened glass
- High-efficiency PMMA lens
- Integral control gear
- Recessing box in high-density polyethylene is included
- Suitable for drive-over with a maximum load of 2000 kg
- Vehicles with pneumatic tires can drive over the luminaire but the speed must not exceed 50 km/h
- Load is transferred by the housing to the foundation
- The distance between the luminaire and the illuminated surface should be at least 0.5 m

Optic



Product colour



00 - Stainless Steel

KIOS 11 (KI-60657)

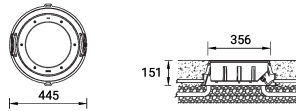
Technical information

Material	Stainless Steel
Light source	16 LED
Power	25 W
Lumen	2297 - 2739 lm
Efficacy	92 - 110 lm/W
Driver option	Integral control gear
Driver	Constant current (CC)
Input voltage	220-240 V 50/60 Hz
Optic	T2, T3, T4

Optic value	136°x 48°, 136°x 67°, 92°x 73°
CCT / CRI	2700K CRI80, 3000K CRI80, 4000K CRI80
Bug	B0-U5-G0
ULR	100%
ULOR	100%
Dimming type	On/Off, 1-10V, DALI
Product colours	Stainless Steel
Weight	9.2 kg
Operating temperature	-20 °C to 40 °C

Through wiring	Single cable entry, through wiring upon request
Lens / Reflector / Optic	Clear toughened glass, High-efficiency PMMA lens
MacAdam Ellipse	3 SDCM
Lifetime L90B10 (hours)	> 90,000
Lifetime L80B10 (hours)	> 90,000
Lifetime L80B50 (hours)	> 90,000
Variants (1-10V)	Compatible with EN/ IEC 60598-2-22: Suitable for emergency installations as central supply, non-maintained (Z0)

KI-60657



KIOS 11 (KI-60657)**Accessory**



Anti slip glass
A61412



Connector IP68 3 Pin Power
A62591



DALI Control System
Control-DALI



Connector IP68 5 Pin Power +
Signal
A613191
