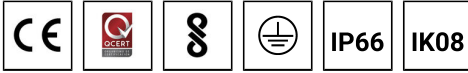


**LADOR 4 (LD-50031)**



**Product description**

Integral control gear - 145x145 mm - Class I



microPrim™



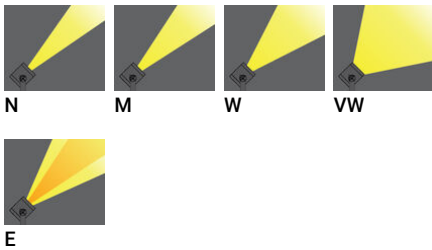
**Luminaire Structure**

- Die-cast aluminium housing
- Thermal heat dissipation body
- Pre-treated before powder coating ensuring high corrosion resistance
- Single cable entry

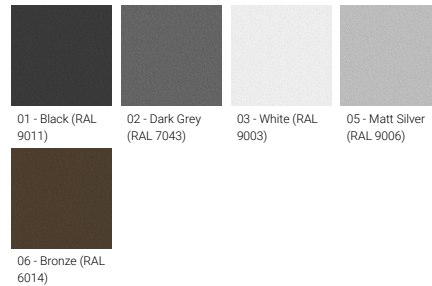
- One IP68 connector supplied with 0.2 m of 3x1.0 sqmm outdoor cable
- Stainless steel fasteners in grade 304 with zinc flake coating (ZFC)
- Durable silicone rubber gasket
- High-efficiency PMMA lens

- Clear toughened glass
- Integral control gear
- LADOR 1, 2, 3 and 4 are not available in European Union

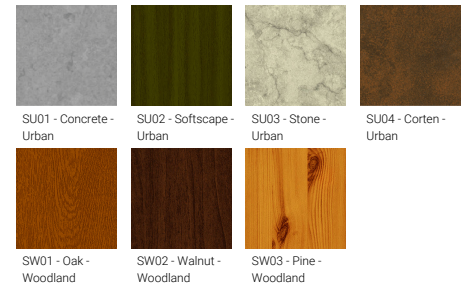
**Optic**



**Product colour**



**Special finishes upon request**



**LADOR 4 (LD-50031)**

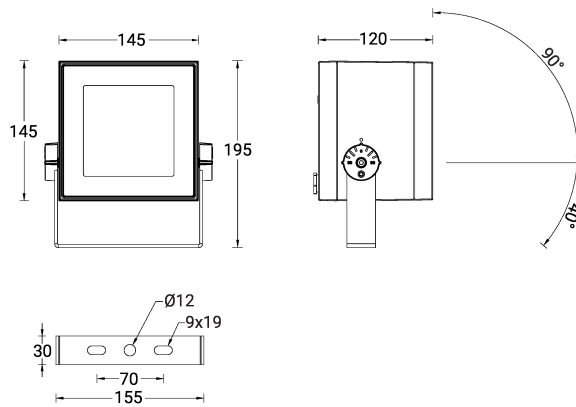
**Technical information**

<b>Material</b>	Aluminium
<b>Light source</b>	16 LED
<b>Power</b>	35 W
<b>Lumen</b>	2219 - 4110 lm
<b>Efficacy</b>	63 - 117 lm/W
<b>Driver option</b>	Integral control gear
<b>Driver</b>	Constant current (CC)
<b>Input voltage</b>	220-240 V 50/60 Hz

<b>Optic</b>	N, M, W, VW, E
<b>Optic value</b>	10°, 16°, 33°, 72°, 43°x11°
<b>CCT / CRI</b>	3000K CRI80, 4000K CRI80, TW(AMBER - 3000K)
<b>Bug</b>	B2-U0-G0, B3-U0-G0
<b>ULR</b>	<1%
<b>ULOR</b>	<1%
<b>CIE flux code n°3</b>	100
<b>Dimming type</b>	On/Off, 1-10V, DALI

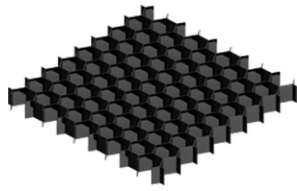
<b>Product colours</b>	Black, Dark Grey, White, Matt Silver, Bronze, Concrete - Urban, Softscape - Urban, Stone - Urban, Corten - Urban, Oak - Woodland, Walnut - Woodland, Pine - Woodland
<b>Weight</b>	3.0 kg
<b>Operating temperature</b>	-20 °C to 40 °C
<b>EPA (m2)</b>	0.028
<b>Cable</b>	One IP68 connector supplied with 0.2 m of 3x1.0 sqmm outdoor cable
<b>Through wiring</b>	Single cable entry
<b>Lens / Reflector / Optic</b>	High-efficiency PMMA lens, Clear toughened glass
<b>Variants (1-10V, DALI)</b>	Compatible with EN/ IEC 60598-2-22: Suitable for emergency installations as central supply, non-maintained (Z0)

LD-50031

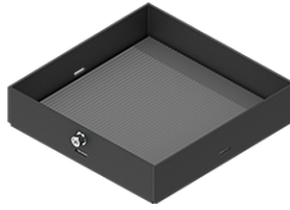


**LADOR 4 (LD-50031)****Accessory**

Ground spike  
**A50441**



Honeycomb louvre  
**A52121**



Linear spread lens  
**A51414**



DALI Control System  
**Control-DALI**



Anti-glare visor  
**A53131**

Please contact the factory for technical details if you wish to use Anti-glare accessories, Colour filters, Lenses and slip glasses in combination.