

LADOR 13 (LD-20011)



Product description

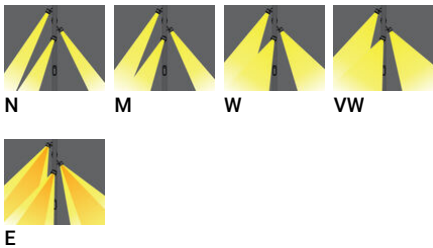
Supplied with specific 4 m square, straight aluminium pole: APC140102-LD



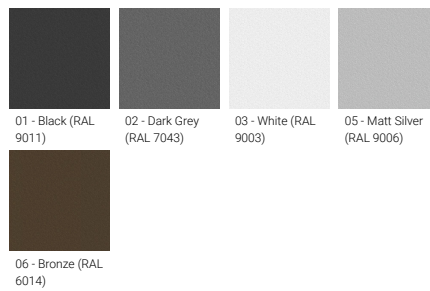
Luminaire Structure

- Die-cast aluminium housing
- Pre-treated before powder coating ensuring high corrosion resistance
- Thermal heat dissipation body
- Single cable entry, through wiring upon request
- One cable gland supplied with 2 m of 3x1.0 sqmm outdoor cable
- Stainless steel fasteners in grade 304 with zinc flake coating (ZFC)
- Durable silicone rubber gasket
- High-efficiency PMMA lens
- Clear toughened glass
- Integral control gear
- Maximum wind load resistance is 140 km/h
- Surge protection 10kV

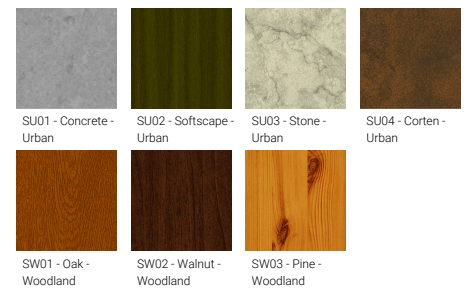
Optic



Product colour



Special finishes upon request



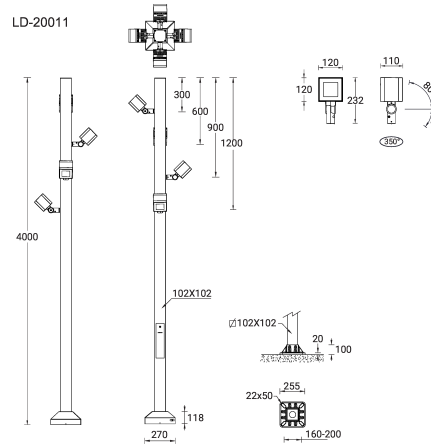
LADOR 13 (LD-20011)

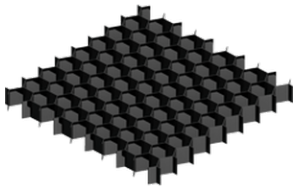
Technical information

Material	Aluminium
Light source	4 x 9 LED
Power	84 W
Lumen	7684 - 9456 lm
Efficacy	91 - 113 lm/W
Driver option	Integral control gear
Driver	Constant current (CC)
Input voltage	220-240 V 50/60 Hz
Optic	N, M, W, VW, E
Optic value	10°, 17°, 34°, 70°, 43°x11°

CCT / CRI	3000K CRI80, 4000K CRI80
Bug	B2-U0-G0, B3-U0-G0
ULR	<1%
ULOR	<1%
CIE flux code n°3	100
Dimming type	On/Off, DALI
Product colours	Black, Dark Grey, White, Matt Silver, Bronze, Concrete - Urban, Softscape - Urban, Stone - Urban, Corten - Urban, Oak - Woodland, Walnut - Woodland, Pine - Woodland
Weight	21.4 kg
Operating temperature	-20 °C to 40 °C
EPA (m2)	0.486

Cable	One cable gland supplied with 2 m of 3x1.0 sqmm outdoor cable
Through wiring	Single cable entry, through wiring upon request
Lens / Reflector / Optic	High-efficiency PMMA lens, Clear toughened glass
MacAdam Ellipse	3 SDCM
Lifetime L90B10 (hours)	> 120,000
Lifetime L80B10 (hours)	> 120,000
Lifetime L80B50 (hours)	> 120,000
Variants (On/Off, DALI)	Compatible with EN/ IEC 60598-2-22: Suitable for emergency installations as central supply, non-maintained (Z0)



LADOR 13 (LD-20011)**Accessory**

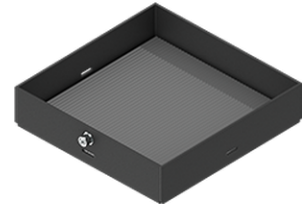
Honeycomb louvre
A52021



Anti-glare visor
A53031



DALI Control System
Control-DALI



Linear spread lens
A51314

Please contact the factory for technical details if you wish to use Anti-glare accessories, Colour filters, Lenses and slip glasses in combination.

Pole (required)

4 m - Square, straight aluminium
pole for LADOR
APC140102-LD