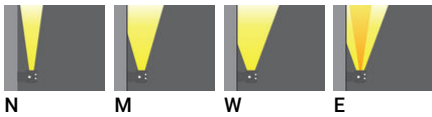


**INFINITE 1 (INF-30002)****Product description**

Extra clear - Without remote driver - Constant voltage (CV) 24 V - 25 x 25 x 400 mm

**Luminaire Structure**

- 6063 High density extruded aluminium alloy
- Adjustable stainless steel bracket
- Two cable entries for through wiring
- Two IP68 connectors supplied with 2x0.3 m of 2x0.5 sqmm outdoor cable
- Extra clear polyurethane encapsulated
- Remote driver (not included)

**Optic**

N M W E

**Product colour**

01 - Black (RAL 9011) 02 - Dark Grey (RAL 7043) 03 - White (RAL 9003) 05 - Matt Silver (RAL 9006)

06 - Bronze (RAL 6014)

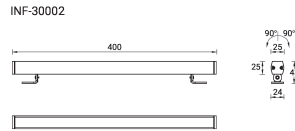
**INFINITE 1 (INF-30002)**

**Technical information**

<b>Material</b>	Aluminium
<b>Light source</b>	10 LED
<b>Power</b>	9.6 W
<b>Lumen</b>	317 - 403 lm
<b>Efficacy</b>	33 - 42 lm/W
<b>Driver option</b>	Remote driver (not included)

<b>Driver</b>	Constant voltage (CV)
<b>Input voltage</b>	24 VDC
<b>Optic</b>	N, M, W, E
<b>Optic value</b>	15°, 30°, 40°, 15°X50°
<b>CCT / CRI</b>	2700K CRI90, 3000K CRI90, 4000K CRI90
<b>Dimming type</b>	On/Off

<b>Product colours</b>	Black, Dark Grey, White, Matt Silver, Bronze
<b>Weight</b>	0.27 kg
<b>Operating temperature</b>	-20 °C to 50 °C
<b>Cable</b>	Two IP68 connectors supplied with 2x0.3 m of 2x0.5 sqmm outdoor cable
<b>Through wiring</b>	Two cable entries for through wiring
<b>Lens / Reflector / Optic</b>	Extra clear polyurethane encapsulated



**INFINITE 1 (INF-30002)****Accessory**

Driver (CV) - On/Off - 150 W -  
IP67 - 24 V  
**A34891-ND**



Driver (CV) - On/Off - 100 W -  
IP67 - 24 V  
**A34791-ND**



Driver (CV) - On/Off - 36 W - IP67  
- 24 V  
**A34491-ND**



Driver (CV) - On/Off - 60 W - IP67  
- 24 V  
**A34591-ND**



Driver (CV) - On/Off - 200 W -  
IP67 - 24 V  
**A34991-ND**



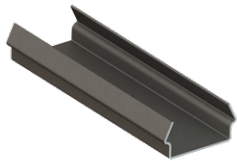
Driver (CV) - On/Off - 350 W -  
IP67 - 24 V  
**A35091-ND**



Cable - Connector IP68 Female 2  
Pin Power - 300 mm (Custom  
length available)  
**A615591**



Continuous Joint clamp  
**A615891**



Surface Mounting Clamp  
**A615991**