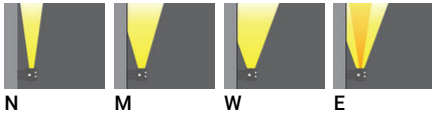


INFINITE 2 (INF-30021)**Product description**

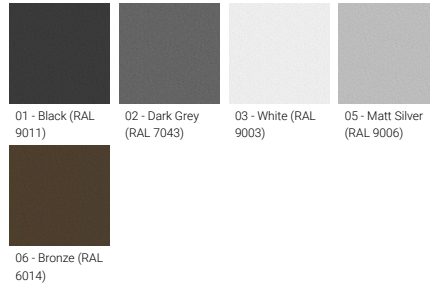
Extra clear - Without remote driver - Constant voltage (CV) 24 V - 40 x 40 x 470 mm

**Luminaire Structure**

- 6063 High density extruded aluminium alloy
- Adjustable stainless steel bracket
- Two cable entries for through wiring
- Two IP68 connectors supplied with 2x0.3 m of 2x0.5 sqmm outdoor cable
- Extra-clear in polyurethane encapsulation, high-efficiency PMMA lens, or tempered glass
- Remote driver (not included)

Optic

N M W E

Product colour

INFINITE 2 (INF-30021)

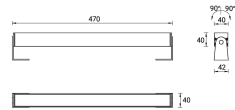
Technical information

Material	Aluminium
Light source	12 LED
Power	14.4 W
Lumen	835 - 907 lm
Efficacy	58 - 63 lm/W
Driver option	Remote driver (not included)

Driver	Constant voltage (CV)
Input voltage	24 VDC
Optic	N, M, W, E
Optic value	12°, 25°, 42°, 10x40°
CCT / CRI	2700K CRI90, 3000K CRI90, 4000K CRI90
Dimming type	On/Off

Product colours	Black, Dark Grey, White, Matt Silver, Bronze
Weight	0.50 kg
Operating temperature	-20 °C to 50 °C
Cable	Two IP68 connectors supplied with 2x0.3 m of 2x0.5 sqmm outdoor cable
Through wiring	Two cable entries for through wiring
Lens / Reflector / Optic	Extra-clear in polyurethane encapsulation, high-efficiency PMMA lens, or tempered glass

INF-30021



INFINITE 2 (INF-30021)**Accessory**

Driver (CV) - On/Off - 150 W -
IP67 - 24 V
A34891-ND



Driver (CV) - On/Off - 100 W -
IP67 - 24 V
A34791-ND



Driver (CV) - On/Off - 36 W - IP67
- 24 V
A34491-ND



Driver (CV) - On/Off - 60 W - IP67
- 24 V
A34591-ND



Driver (CV) - On/Off - 200 W -
IP67 - 24 V
A34991-ND



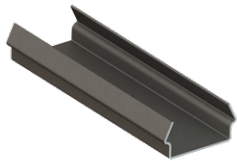
Driver (CV) - On/Off - 350 W -
IP67 - 24 V
A35091-ND



Cable - Connector IP68 Female 2
Pin Power - 300 mm (Custom
length available)
A615591



Continuous Joint clamp
A615891



Surface Mounting Clamp
A615991