

INFINITE 2 (INF-30041)**Product description**

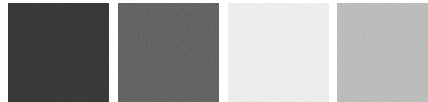
Diffused - Without remote driver - Constant voltage (CV) 24 V - 40 x 40 x 420 mm

**Luminaire Structure**

- 6063 High density extruded aluminium alloy
- Adjustable stainless steel bracket
- Two cable entries for through wiring
- Two IP68 connectors supplied with 2x0.3 m of 2x0.5 sqmm outdoor cable
- Diffused polyurethane encapsulated
- Remote driver (not included)

Optic

0

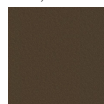
Product colour

01 - Black (RAL 9011)

02 - Dark Grey (RAL 7043)

03 - White (RAL 9003)

05 - Matt Silver (RAL 9006)



06 - Bronze (RAL 6014)

INFINITE 2 (INF-30041)

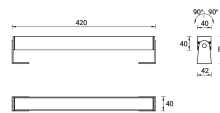
Technical information

Material	Aluminium
Light source	128 LED
Power	14.4 W
Lumen	547 - 562 lm
Efficacy	38 - 39 lm/W
Driver option	Remote driver (not included)

Driver	Constant voltage (CV)
Input voltage	24 VDC
Optic	0
CCT / CRI	2700K CRI90, 3000K CRI90
Dimming type	On/Off, DALI
Product colours	Black, Dark Grey, White, Matt Silver, Bronze

Weight	0.50 kg
Operating temperature	-20 °C to 50 °C
Cable	Two IP68 connectors supplied with 2x0.3 m of 2x0.5 sqmm outdoor cable
Through wiring	Two cable entries for through wiring
Lens / Reflector / Optic	Diffused polyurethane encapsulated

INF-30041



INFINITE 2 (INF-30041)**Accessory**

Driver (CV) - On/Off - 150 W -
IP67 - 24 V
A34891-ND



Driver (CV) - On/Off - 100 W -
IP67 - 24 V
A34791-ND



Driver (CV) - On/Off - 36 W - IP67
- 24 V
A34491-ND



Driver (CV) - On/Off - 60 W - IP67
- 24 V
A34591-ND



Driver (CV) - On/Off - 200 W -
IP67 - 24 V
A34991-ND



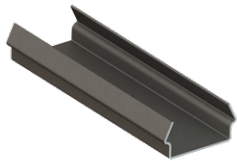
Driver (CV) - On/Off - 350 W -
IP67 - 24 V
A35091-ND



Cable - Connector IP68 Female 2
Pin Power - 300 mm (Custom
length available)
A615591



Continuous Joint clamp
A615891



Surface Mounting Clamp
A615991