

## DM TEC 003

### Flush Ceiling Mounted Motion Detector 360°

#### Description

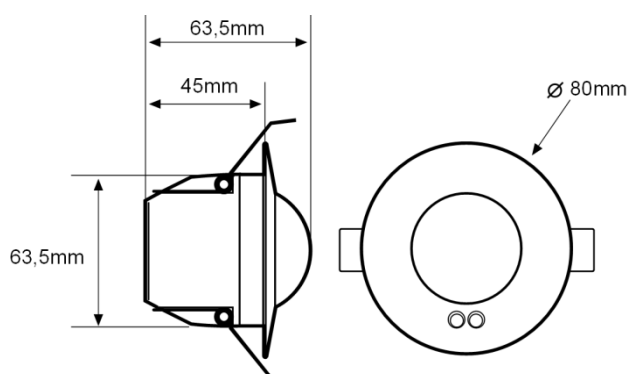
- Motion detector with PIR technology.
- Flush ceiling mounting.
- Lighting control depending on the movement and natural light.
- Time delay and brightness level are adjustable by Potentiometer or Remote control (EM MAN DM0). Sensitivity by remote control.
- Possibility to memorize the brightness level by remote control.
- Coverage of 360° and Ø7m, at 2,5m high.
- Zero crossing point technology to protect the contactors of the relay and manage high loads.
- Valid for all type of lamps, including LED lamps and Fluorescent tubes.
- Admits contactor.
- Application examples: corridors, neighbour communities, bathrooms, etc.



#### Technical Characteristics

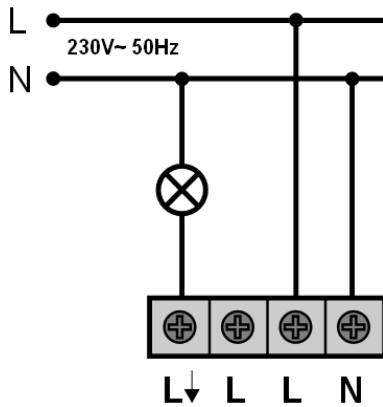
|  |                                       |
|--|---------------------------------------|
| Reference                              | DM TEC 003                            |
| Power Supply                           | 230V~ ±10% 50/60Hz                    |
| Consumption                            | < 1W                                  |
| Switching Capacity                     | 16A cosφ = 1                          |
| - Incandescent & Halogens 230V         | 3000W                                 |
| - Halogens with Electronic Transfo.    | 3000W                                 |
| - Halogens with Ferromagnetic Transfo. | 2400W                                 |
| - Fluorescent                          | 1300W (130μF)                         |
| - Fluo-Compacts                        | 18x7W, 12x11W, 10x15W, 10x20W, 10x23W |
| - LED Lamps                            | 400W                                  |
| Coverage area                          | 360° & Ø7m at 2,5m of high & 18°C     |
| Brightness level                       | 3 ~ 100Lux                            |
| Time Delay                             | 5seg ~ 10min                          |
| Protection Degree                      | IP40, Class II                        |
| Working Temperature                    | -10°C ~ +45°C                         |

#### Dimensions

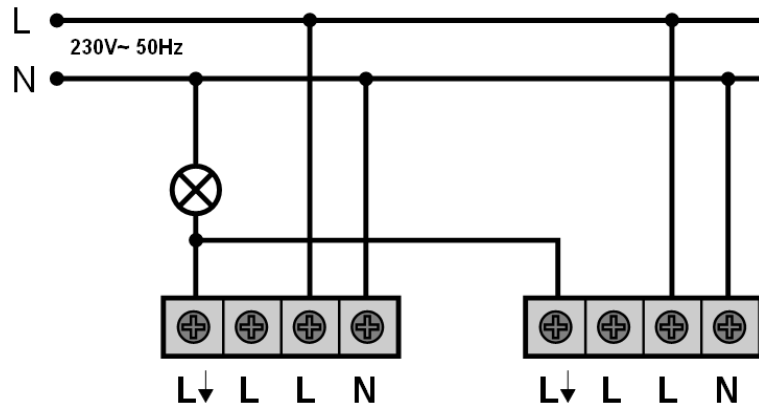


## Wiring Diagram

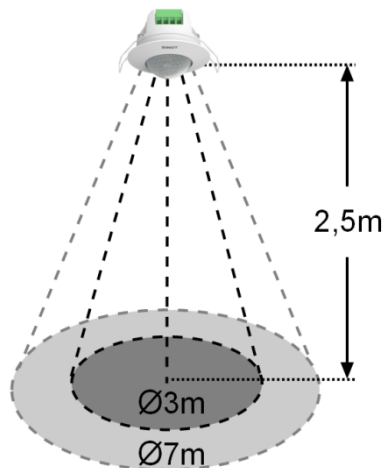
· Standard installation:



· Installation with 2 motion detectors in parallel:



## Coverage



## Accessories

## EM MAN DM0 - IR Remote Control for Parameters Adjustment:

- Allowing adjustment of: Time Delay and Brightness.
- 3 advantages:
  - Save time in the installation.
  - Same adjustment for all motion detector of the same Installation.
  - Cancel potentiometer control which prevents unwanted manipulations.

