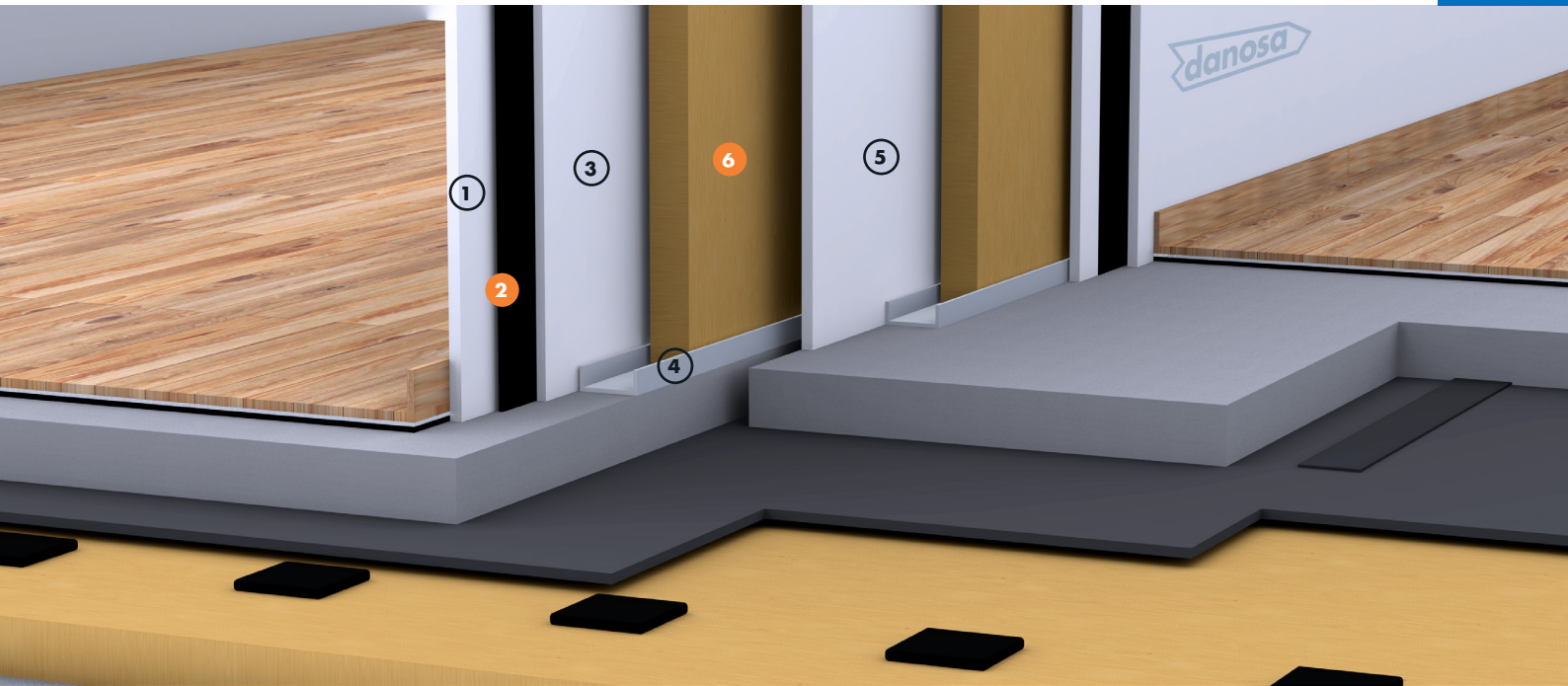


SEPARATING WALL BETWEEN NOISY PREMISES

Acoustic insulation: Rock wool / high-density membrane



DIV3



NOISE PROTECTION
M.A.D.®

NOISE PROTECTION
ROCDAN®

ADVANTAGES

- Airborne noise insulation D_{nTw} between 55 - 65 dB
- Shifts system resonance frequencies to less audible frequencies
- The acoustic membrane improves the insulation at low frequencies of the laminated plaster system
- Absorbent at medium and high frequencies
- The fifth plate ensures the tightness of the system to recessed installations
- Its thermal and acoustic insulation capacity can be improved by increasing the thickness of the structure and mineral wool
- Light system better for structural strength with low thickness and faster execution

APPLICATION AREAS

- Gyms
- Cinemas
- Radio studios
- Auditoriums, theaters, music schools: central buildings and music booths

LEGEND

Partition wall:

- ① 12.5 mm plasterboard
- ② M.A.D.® acoustic insulation
- ③ 12.5 mm laminated plasterboard
- ④ Plasterboard structure
- ⑤ 15 mm plasterboard
- ⑥ ROCDAN® 231/40 acoustic insulation

SEPARATING WALL BETWEEN NOISY PREMISES



Acoustic insulation: Rock wool / high-density membrane

TECHNICAL DETAILS

Function	Product	Description	Property	Value
Anti-resonant acoustic insulation	M.A.D.® 4	High-density sheet.	ΔR_w between rigid elements	4 dBA
Acoustic insulation absorbent at medium and high frequencies	ROCDAN® 231/40	Rock wool panel.	R_w	40 - 61 dBA

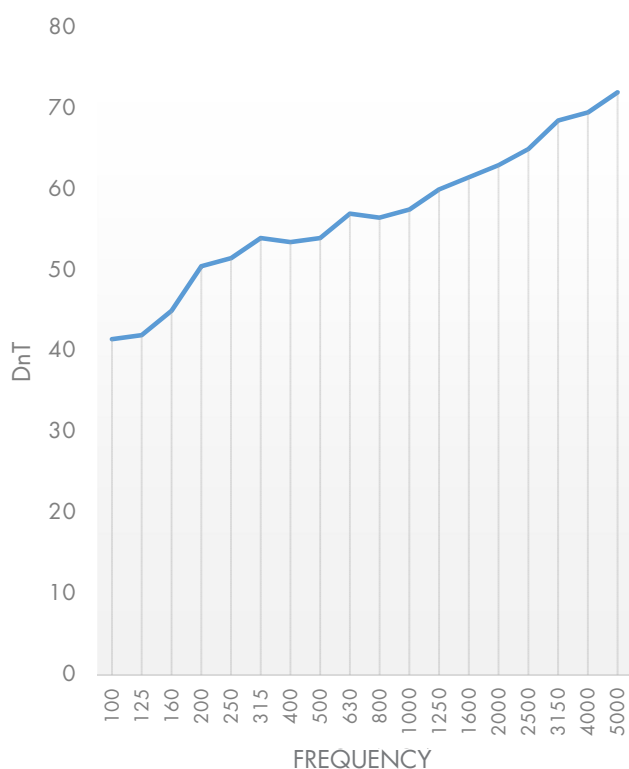
Note: This sheet is included in an acoustic box-in-box system.

APPLICATION METHOD

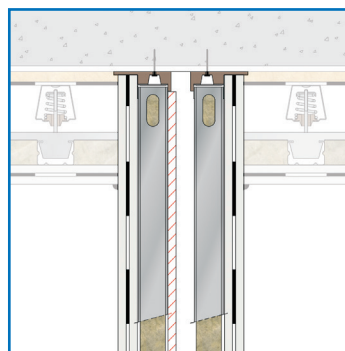
Acoustic insulation of plasterboard separating wall formed by: 12.5 plasterboard fixed to the structure by means of screws; Acoustic membrane 4 mm thick M.A.D.® 4 stapled to the first board; fixing to the structure of the second plasterboard 12.5 mm thick by means screws; placement of absorbent material in its interior based on rock wool of 70 kg/m³ density, ROCDAN® 231/40; 15 mm thick laminated plasterboard fixed with screw to the 1st structure; separated

at least 1 cm from the 15 mm plasterboard, placement of the second structure; placement of absorbent material in its interior based on rock wool of 70 kg / m³ density, ROCDAN® 231/40; 12.5 mm plasterboard fixed to the structure by means of screws; Acoustic membrane 4 mm thick M.A.D.® 4 stapled to the first board; fixing to the structure of the second plasterboard of 12.5 mm thickness by means screws, fully sealed and installed, ready to apply the finishing.

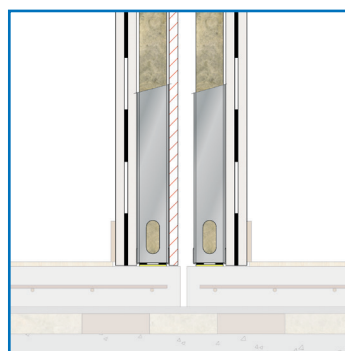
GRAPH



CONSTRUCTION DETAILS



Junction of separating wall with roof



Junction of separating wall with floor