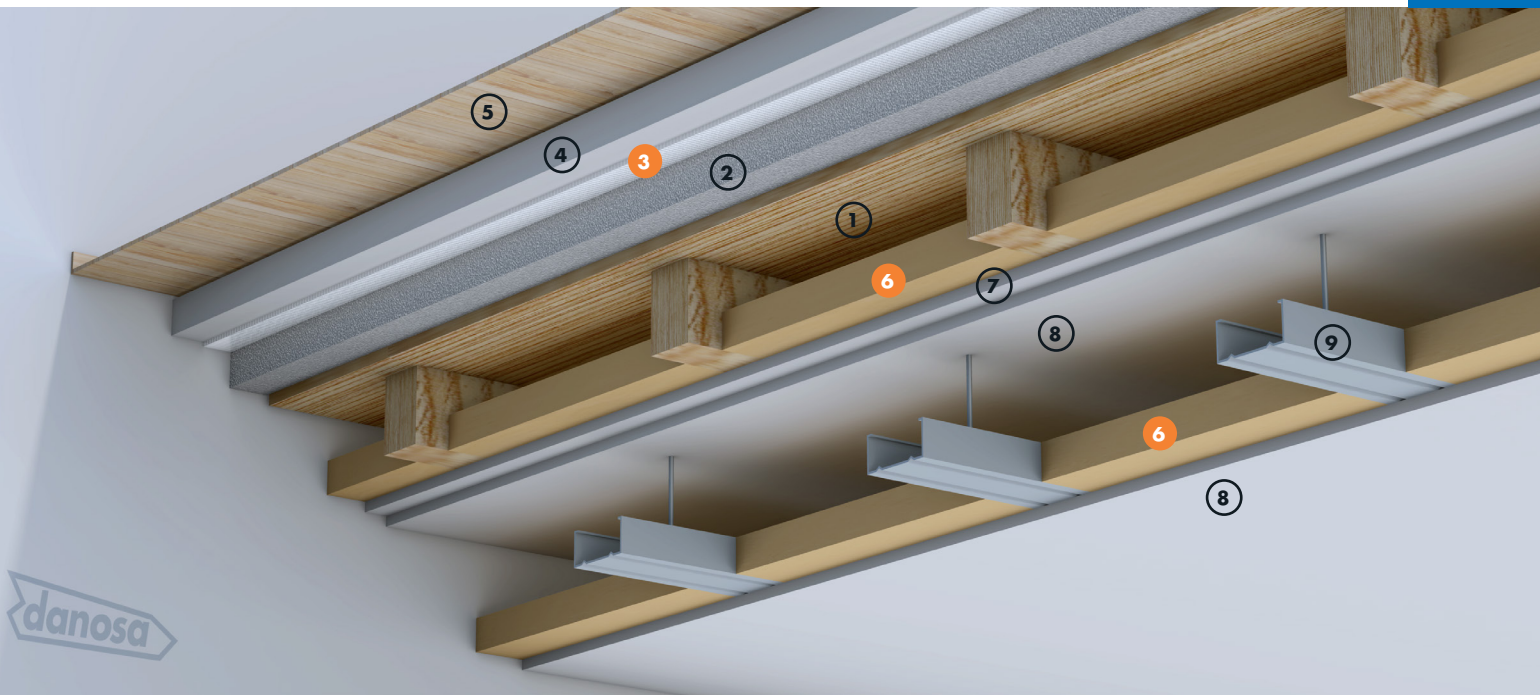


# BUILDING SOLUTIONS FOR SLABS INTERNAL ENCLOSURES

Acoustic insulation: Rock wool / Cross-linked polyethylene



FOR1



## NOISE PROTECTION IMPACTODAN®

## NOISE PROTECTION ROCDAN®

### ADVANTAGES

- DnTw airborne insulation between 58 and 62 dB
- L'nTw impact noise level between 48 and 39 dB
- Plasterboards with fire treatment meet fire resistance requirements.
- The suspended ceiling allows the passage of installations without less acoustic insulation.
- Durability over time.
- Compressive strength
- Compatible with installations on the ground being unnecessary to throw a layer of padding.
- You do not need a vapor barrier layer

### APPLICATION AREAS

- Rehabilitation of residential buildings housing with wooden structure.
- Rehabilitation of public buildings such as hotels.
- Commercial bass rehabilitation in wooden buildings

### LEGEND

#### Floor:

- ① Wooden floor
- ② Lightened mortar
- ③ IMPACTODAN® 5 acoustic insulation
- ④ Self-leveling mortar
- ⑤ Finishing

#### Floating roof:

- ⑥ ROCDAN® 231 acoustic insulation
- ⑦ Double 15 mm plasterboard type FOC
- ⑧ 15 mm laminated plasterboard
- ⑨ Plasterboard structure

# BUILDING SOLUTIONS FOR SLABS INTERNAL ENCLOSURES



Acoustic insulation: Rock wool / Cross-linked polyethylene

## TECHNICAL DETAILS

Function	Product	Description	Property	Value
Acoustic insulation for impact noise	<b>IMPACTODAN® 5</b>	Chemically cross-linked and foamed polyethylene sheet	$\Delta L_w$	19 dB
			$\Delta R_A$	4-8 dBA (according to the mortar thickness)
Acoustic insulation at medium and high frequencies	<b>ROCDAN® 231/40</b>	Rock wool panel	$\Delta R_A$	15 dB

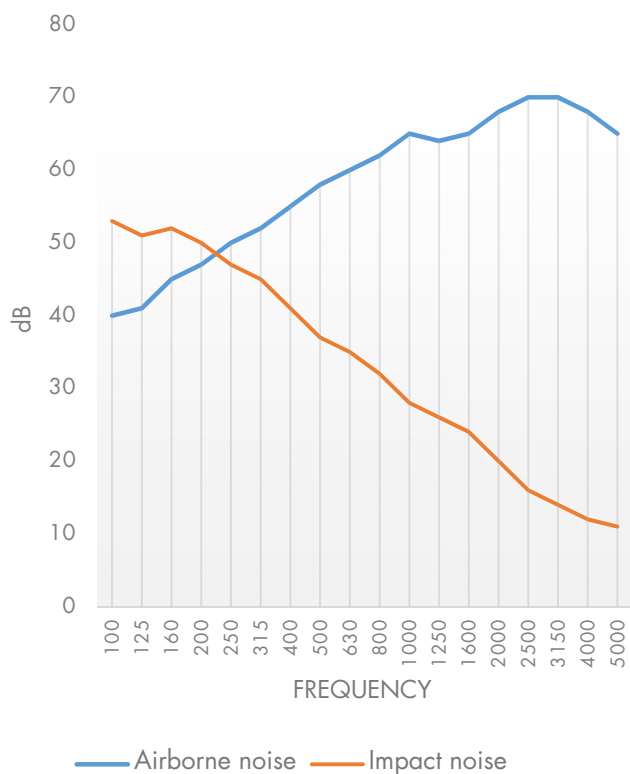
Note: This sheet is included in an acoustic box-in-box system

## APPLICATION METHOD

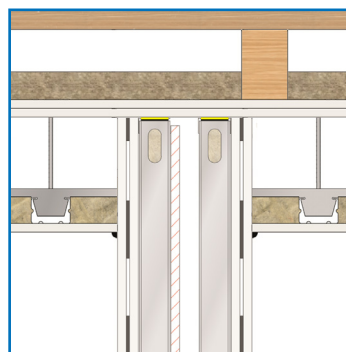
Acoustic insulation on wooden floor, consisting of:  
Lightened mortar on the wooden base board of 4 cm and 2 cm of regularization mortar, cross-linked polyethylene sheet certified by D.I.T 439 R/16, IMPACTODAN® 5; 5 cm thick mortar, including proportional part of lap and

perimeter bands, ready to install the finishing.  
Double plasterboard with fire treatment for fire resistance of 60 min, with mineral wool 70 kg/m³ density and 40 mm thick, ROCDAN® 231/40 between timbers, and ready to install decorative ceiling.

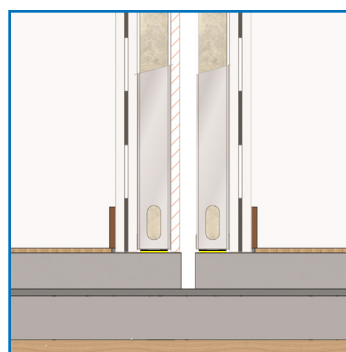
## GRAPH



## CONSTRUCTION DETAILS



Forging meeting with partition wall (top)



Forging meeting with partition wall (bottom)