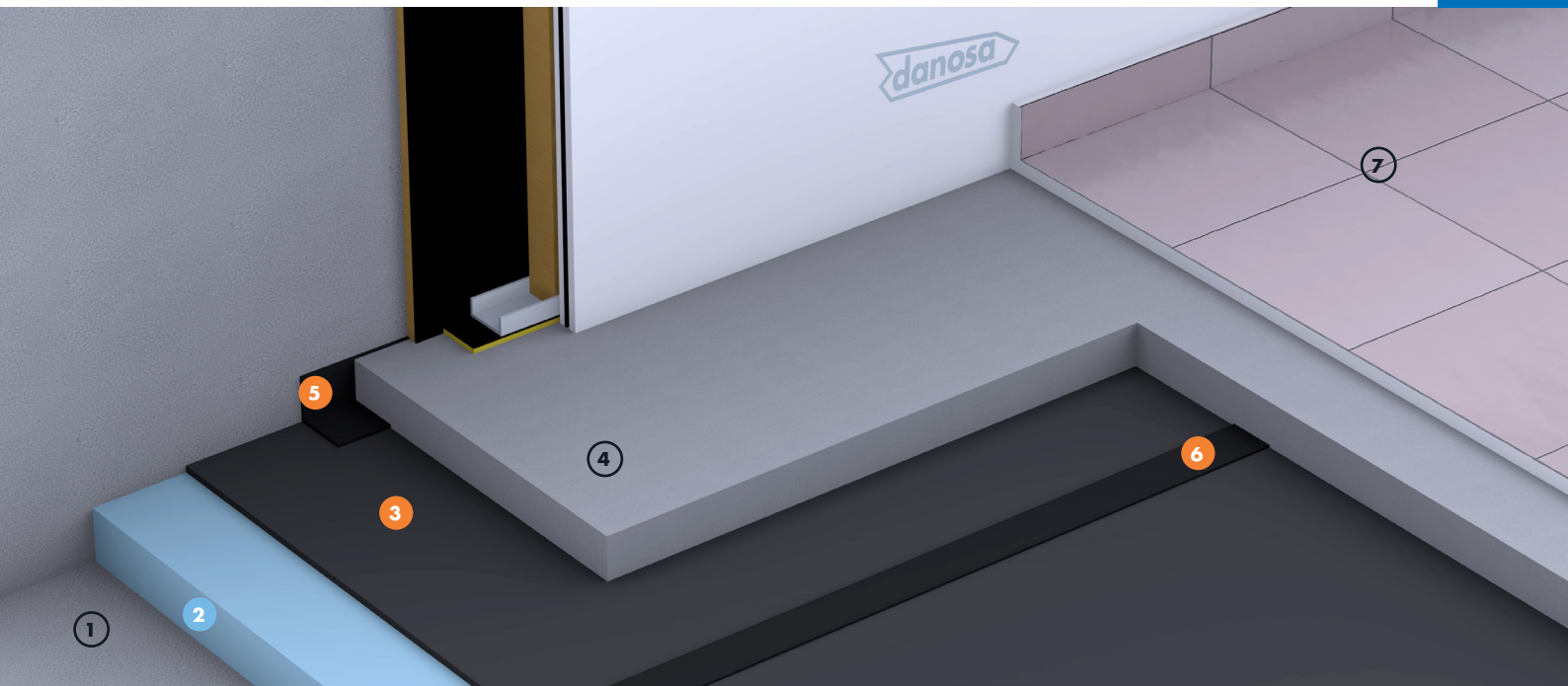


THERMO ACUSTIC BASIC FLOATING FLOOR



SUF3

Acoustic insulation: Cross-linked polyethylene
Thermal insulation: Extruded polystyrene (XPS)
Finish: As required



NOISE PROTECTION
IMPACTODAN®

ENERGY SAVING
DANOPREN® TR

ADVANTAGES

- DnTw airborne insulation between 55 and 64 dB
- L'nTw impact noise level between 58 and 42 dB
- Extended Durability
- High durability of thermal performance
- Avoid risks of interstitial condensation
- High vapor diffusion resistance of extruded polystyrene
- High resistance to compression
- Compatible with installations on the ground, it is unnecessary to cast a layer of padding
- Does not need a vapor barrier layer
- Installation according to DIT No. 439

APPLICATION AREAS

- Public or private residential buildings on floors that give to non-heated premises or abroad.

LEGEND

Floor:

- ① Slab
- ② DANOPREN® TR thermal insulation
- ③ IMPACTODAN® 5 acoustic insulation
- ④ Screed of mortar thickness > 5 cm or self-leveling mortar type CT-C30-F7 for 3-4 cm thickness
- ⑤ Acoustic insulation Peripheral band 200 (Banda desolidarizadora perimetral 200)
- ⑥ Acoustic insulation Sealing tape 70 (Cinta de Solape 70)
- ⑦ Finishing

THERMO ACUSTIC BASIC FLOATING FLOOR



Acoustic insulation: Cross-linked polyethylene
 Thermal insulation: Extruded polystyrene (XPS)
 Finish: As required

TECHNICAL DETAILS

Function	Product	Description	Property	Value
Acoustic insulation at impact noise	IMPACTODAN® 5	Chemically cross-linked and foamed polyethylene sheet.	ΔL_w	18 - 21 dB
			ΔR_w	4-8 dBA (according to mortar thickness)
Thermal insulation	DANOPREN® TR	Rigid sheets of extruded polystyrene (XPS) with high compressive strength and minimal water absorption.	Thermal conductivity (EN 12667)	$\lambda = 0,033 - 0,037$ W/m·K

Note: This sheet is included in an acoustic box-in-box system.

APPLICATION METHOD

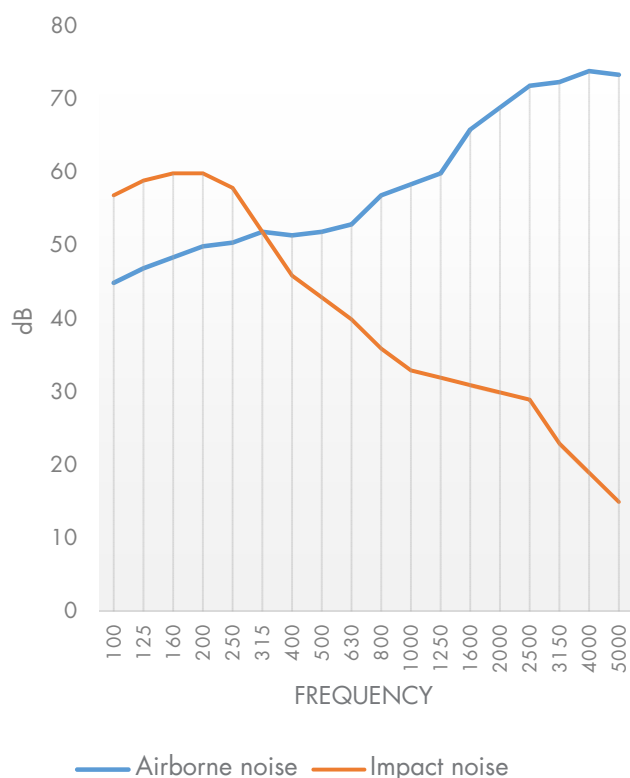
Thermal and acoustic insulation on slab in contact with the outside air formed by:

DANOPREN® TR extruded polystyrene panels, 40 mm thick, with mid-wood perimeter joints, deposited on the slab and protected by acoustic sheet of cross-linked polyethylene and foamed closed cell, 5mm thick, IMPACTODAN® 5, sealed with self-adhesive cross-linked polyethylene tape of 3 mm

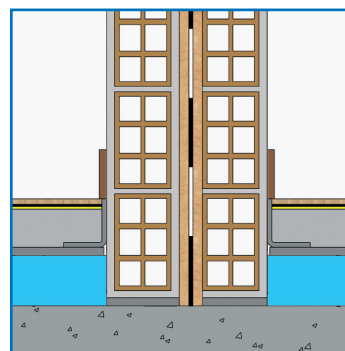
thick, 70 Overlap tape (Cinta de Solape), mortar at least 5 cm thick separated from the structure and installations by using Peripheral band tape (Desolidarizador Perimetral); ready to install ceramic tiles.

Installation system according to D.I.T. 439R / 16.

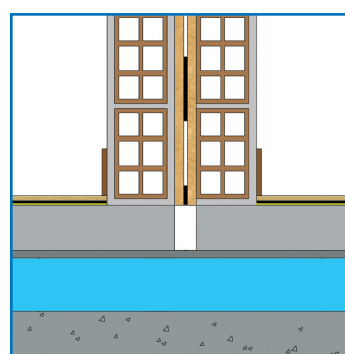
GRAPH



CONSTRUCTION DETAILS



Partition wall on the band



Partition wall on the mortar