



VITAQ SYSTEM



A-80 X FLOW VITAQ VALVE

Quarter-turn angle ball valves for surface mounting specially for THERMOS, more flow of the same size.

- VITAQ system, more life, less lime at higher temperatures.
- Bigger passage section, lower pressure loss and lower noise level.
- Without reducing flow, it prolongs comfort at service points.
- European Brass, DW (4MS) quality for use in drinking water installations.
- The knurled inlet thread make it easy to apply the sealant.
- 100% valves are tested for inner leakage.
- Strong one-piece body construction for secure installations.
- Double o-ring.



TECHNICAL SHEET A-80 X-FLOW VITAQ VALVE

PRODUCT DESCRIPTION

Quarter-turn angle ball valves with manual operation and ball-stem with LARGER WATER FLOW for surface mounting where greater flow comfort is required without compromising a compact appearance.

VITAQ system increase the valve life span and flow comfort in hard water areas.

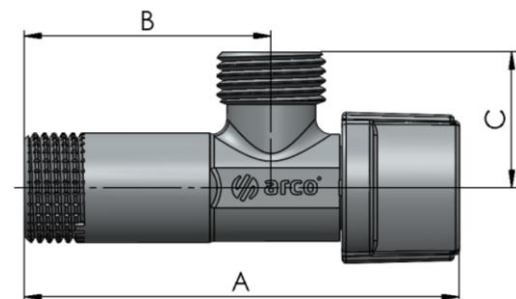
PRODUCT SCOPE

Specially design for installations of electrical thermos and instantaneous water heater, as well as any other that requires an appliance valve that provides a higher service flow.

GENERAL DIMENSIONS, PRESSURE AND TEMPERATURE

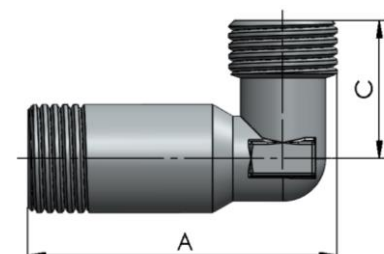
METAL HANDLE VALVE WITHOUT NUT

Code	Size	A (mm)	B (mm)	C (mm)	PN (BAR)	Temp. (°C)
NOV54MAC	1/2X1/2	83	47	26	16	0 to 95



MALE ELBOW

Code	Size	A (mm)	C (mm)	PN (BAR)	Temp. (°C)
B3160	1/2X1/2	83	26	16	0 to 95



See technical characteristics of the ELBOW in the Technical Sheet FT01200.

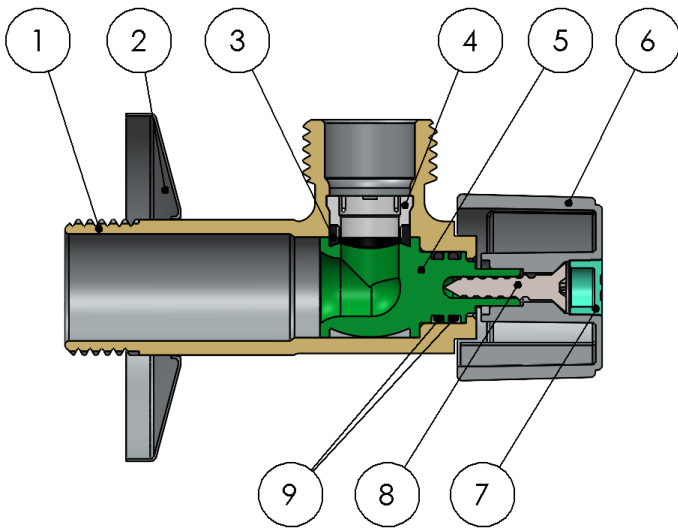
KT54MAC pack includes valve and elbow.



MATERIALS

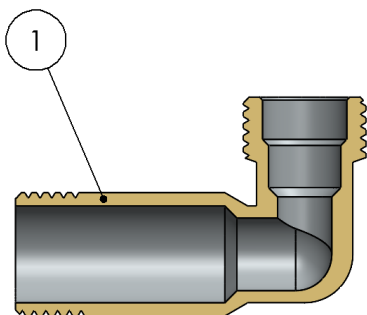
METAL HANDLE VALVE WITHOUT NUT

Item	Component	Material	Finishing
1	Body	Brass CW617N	Chrome plated
2	Rosette	Stainless steel	Stainless steel
3	Seat	NBR	-
4	Supporting clip	POM	-
5	Stem-ball	Anti-lime polymer	VITAQ
6	Handle	ZAMAK	Chrome plated
7	Index	ABS	VITAQ
8	Screw	Stainless steel	Stainless steel
9	O-rings	NBR	-



MALE ELBOW

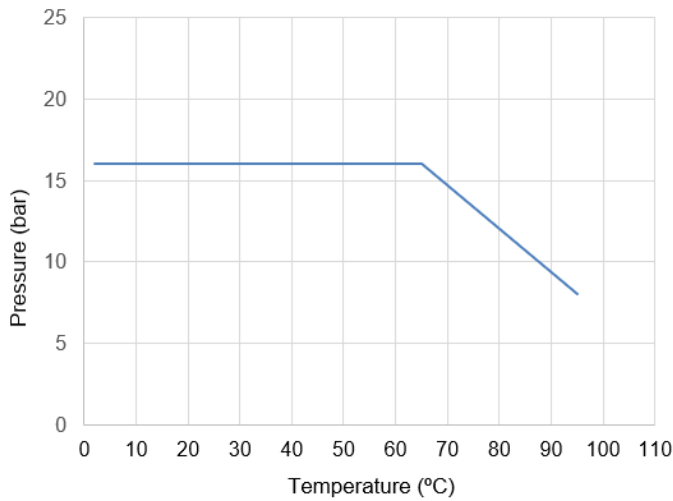
Item	Component	Material	Finishing
1	Body	Brass CW617N	Chrome plated





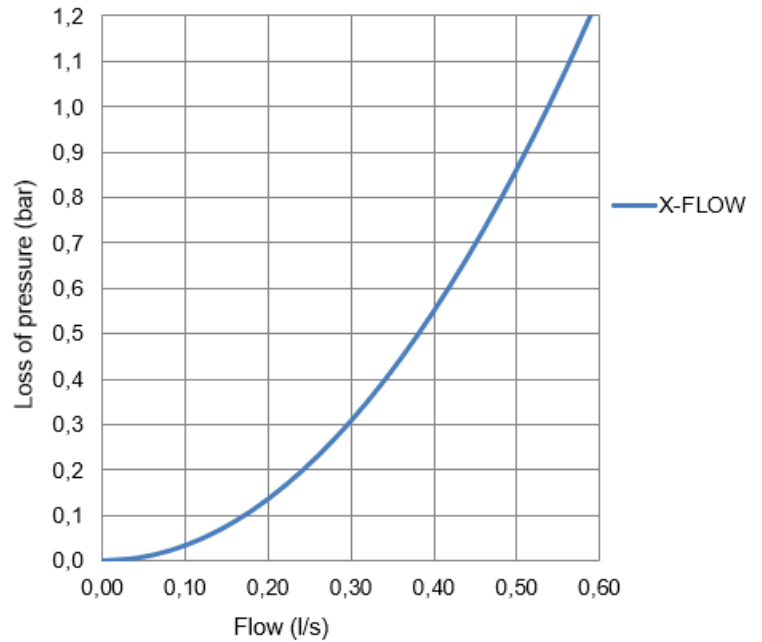
TECHNICAL DATA

Pressure vs. temperature



Temperature range excludes freezing.

**Hydraulic features.
Flow vs. loss of pressure.**



Compatibility with fluids

Fluid	Compatibility
Drinking water and domestic hot water	Excellent

For any other fluid, please contact Arco technical service.

Size	1/2
Kv	1,94

Kv (m³/h), cubic meters per hour that flow through the valve generating a loss of 1 bar pressure.

INSTALLATION AND OPERATION INSTRUCTIONS

Before performing any action, the water supply to the installation should be shut off. Make sure there is no dirt or foreign objects in the connection to the network. Apply the appropriate sealing material to the inlet thread of the valve. The valve should be installed with a suitable tool, preferably with a wrench to hold the body. The tool should act on the flat surfaces of the valve body to avoid deforming this area due to excessive pressure from the tool. Restore the water supply and check the tightness of all connections before fixing the valve to service.

Do not alter the assembly of the valve components; replacement or disassembly of the handle may cause external leaks. Quarter-turn valves should always operate in a fully open position.



All products have an environmental impact during its life cycle, even once retired. All the components of this product can be recycled. Once the use is over, leave the valve in any recycling green point. Válvulas Arco reserves the right to change the product or any of its technical specifications without prior notice.

FT01050ING – Edition 2024-12