

<sup>®</sup>  
osprey  
ss



VITAQ  
SYSTEM

CATALOGUE

MORE LIFE,  
NO LIME

## The VITAQ SYSTEM

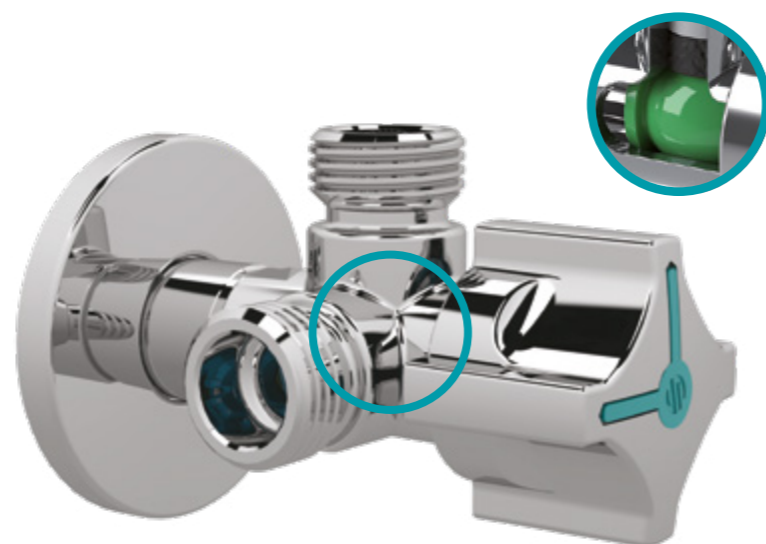
A system created to solve problems of limescale in installations.

Válvulas ARCO, S.L. has developed and launches an anti-limescale system for angle and ball valves.

The **VITAQ system** offers more guarantees to your installation, protecting your valve from limescale build-up and **extending its service life**.

### WHY VITAQ SYSTEM?

1. **VITA** means **LIFE** in Latin.
2. This highlights its main quality: **TO PROVIDE LIFE**.
3. The letter "**Q**" stands worldwide for **QUALITY**, our key corporate value.
4. It is a **SYSTEM** in itself due to its engineering and functional contribution.
5. It offers more years of **guarantee** and extends the product's service life.

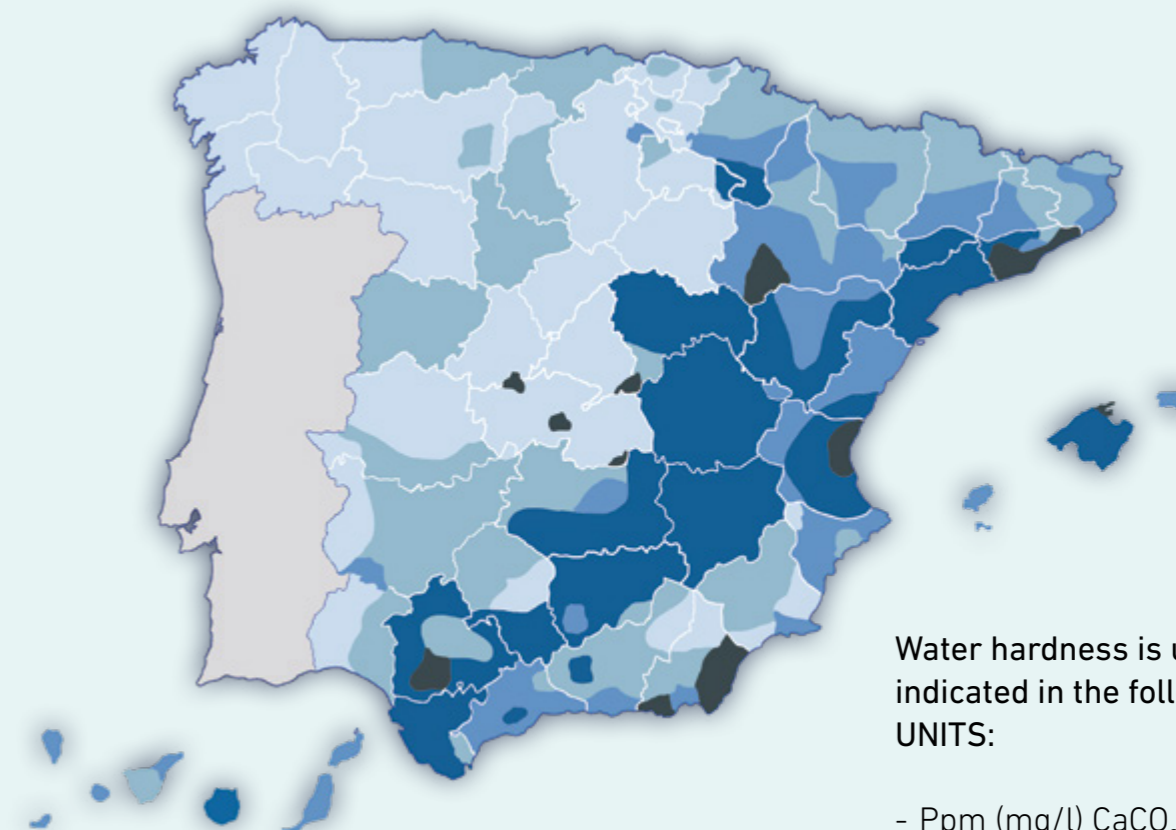


## The problem of hard water

Calcium in water is directly linked to the geological properties of the soil. Water filtered through limestone holds more calcium than water passing through rocky soil.

Water hardness is measured by the amount of calcium and magnesium ions it contains.

- Soft
- Slightly hard
- Hard
- Very hard
- Extremely hard



Water hardness is usually indicated in the following UNITS:

- Ppm (mg/l)  $\text{CaCO}_3$
- French System [°TH]  
equivalent to 10,0 mg/l  $\text{CaCO}_3$
- German System [°D] -  
equivalent to 17,9 mg/l  $\text{CaCO}_3$

## The problem of hard water

Types of water	mg/l	° TH
Soft	< 17	< 1,7
Slightly hard	< 60	< 6,0
Moderately hard	< 120	< 12,0
Hard	< 180	< 18,0
Very hard	< 250	< 25,0
Extremely hard	> 250	> 25,0

**European standards for drinking water:**  
**Max. 50°TF.**

Limescale builds up in pipes, faucets, fittings, and sanitary ware, and it can eventually block them completely. It causes damage to electrical appliances, heating elements and obstructs water pumps. Sometimes the whole installation needs to be removed.



### SIGNS THAT WATER CONTAINS CALCIUM:

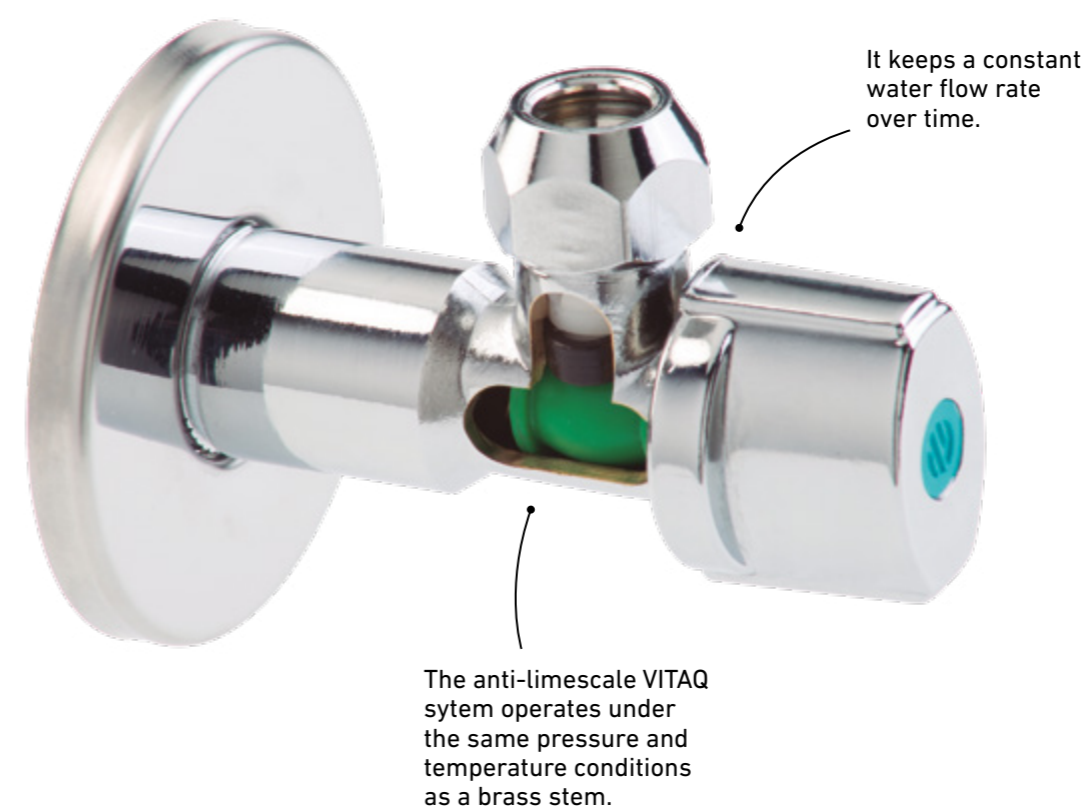
- Decreased water flow through faucets.
- Filters filled with small stones.
- Lower power of water heaters.
- Lime on heating elements affects energy consumption up to 64% more.
- Washly appliances affected by lime need more detergent.

## VITAQ System

ARCO develops and brings to market an anti-calcium system for angle and ball valves. The **VITAQ System** has great advantages over normal fittings for any installation, **protecting valves from limescale, thus extending their useful life.**

The patented **VITAQ®** System, **the one-piece stem-ball is made from a special polymer.** It keeps the same tightness and low pressure loss characteristics of the original brass stem. This design increases resistance, facilitates smooth operation and most importantly, prevents limescale from forming.

- Suitable Drinking Water.
- Ecological, high-tech materials for longer life.
- Keeps water flow constant over time.
- 100% recyclable and non-toxic.



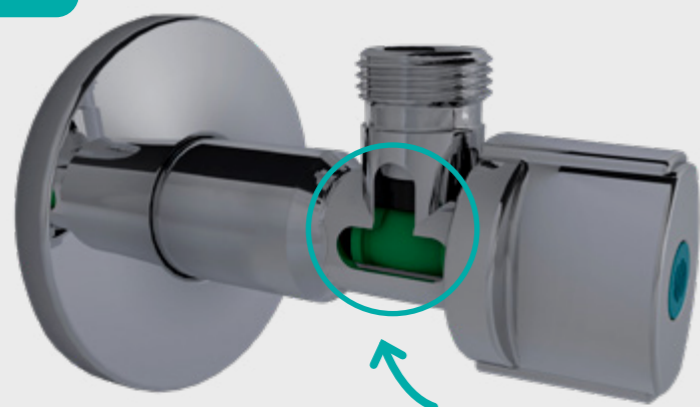
## Valves after one year use:

WITHOUT



Conventional valves offer no protection from aggressive elements such as limescale, making them useless after only a short time.

WITH



15  
YEARS  
GUARANTEE

VITAQ  
SYSTEM

The **VITAQ® System** is a revolutionary new system developed by ARCO that achieves a much longer valve lifetime and avoids limescale build-up.

ARCO revolutionizes plumbing by providing great added value to his customers.



## A-80 ANGLE VALVES

A-80 series are 1/4 turn angle brass stem-ball valves designed for being connected to water pipe systems. They are used to shut off individually water supply to basins, sinks and other different water supply points to proceed to their repairing or replacement.

Valves with **VITAQ SYSTEM** inside are particularly suitable to avoid the effects of lime, increasing the lifespan of the valve.

Different designs of handles made to match modern or more traditional bathroom accessories or mixers.

made in  
spain  
original

4MS  
CW617N

1/4





Angle valve extra polished Chrome PN16 M-M Thread VITAQ - A-80 Lipstick

Long useful life combined with a very careful design and finish.



CODE	SIZE			
202501	1/2M - 3/8M	1		42
202502	1/2M - 3/8M	1	6	12
202504	1/2M - 1/2M	1		42
20250401	1/2M - 1/2M	1		42



Temperature range: 0 — 95°  
Body material: Brass.

Angle valve matte Black PN16 M-M Thread VITAQ - A-80 Lipstick



CODE	SIZE			
202511	1/2M - 3/8M	1		42
202512	1/2M - 3/8M	1	6	12
202514	1/2M - 1/2M	1		42



Temperature range: 0 — 95°  
Body material: Brass.

Angle valve White PN16 M-M Thread VITAQ - A-80 Lipstick



CODE	SIZE			
202521	1/2M - 3/8M	1	6	12



Temperature range: 0 — 95°  
Body material: Brass.



Angle valve Steel PN16 M-M Thread VITAQ - A-80 Lipstick



CODE	SIZE			
202541	1/2M - 3/8M	1	3	6



Temperature range: 0 — 95°  
Body material: Brass.

Angle valve Bronze PN16 M-M Thread VITAQ - A-80 Lipstick



CODE	SIZE			
202531	1/2M - 3/8M	1	3	6



Temperature range: 0 — 95°  
Body material: Brass.

Angle valve Golden PN16 M-M Thread VITAQ - A-80 Lipstick



CODE	SIZE			
202551	1/2M - 3/8M	1	3	6



Temperature range: 0 — 95°  
Body material: Brass.



Angle check valve DR brass Extra polished chrome PN16 F-M Thread VITAQ - A-80 Lipstick



CODE		SIZE		
AS760	→+	1/2F - 1/2M	1	12



Temperature range: 0 — 95°  
Body material: DR Brass.

Angle check valve DR brass Matte black PN16 F-M Thread VITAQ - A-80 Lipstick



CODE		SIZE		
AS762	→+	1/2F - 1/2M	1	12

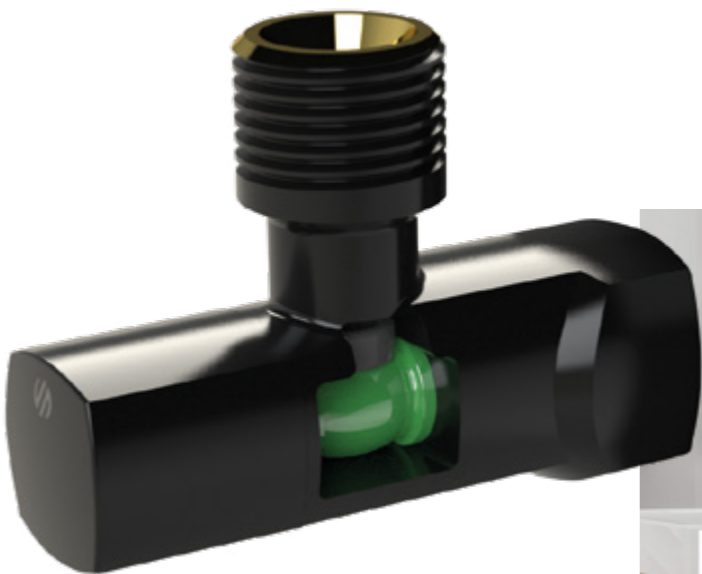


Temperature range: 0 — 95°  
Body material: DR Brass.

# A-80 LIPSTICK

UNIQUE DESIGN. MAXIMUM PERFORMANCE.

A-80 LIPSTICK is the only anti-scale valve on the market that combines elegant design and maximum performance to suit the style of every bathroom.



- Easy installation.
- ¼ turn system.
- Maximum watertightness, 100% tested.
- Low pressure loss thanks to its VITAQ anti-scale system.

## NEW FINISHES!



BLACK    GOLD    STEEL    WHITE    BRONZE    CHROME





Angle valve PN16 M-M Thread VITAQ Metallic nova chromed handle - A-80

Whoever tries them, repeats. The most installed angle valves in Europe.

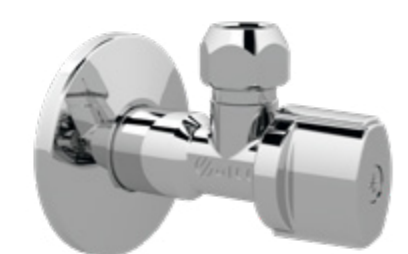


Temperature range: 0 — 95°  
Body material: Brass.

CODE	SIZE			
NOV76MAC	1/2M - 3/8M	2		100
NOV77MAC	1/2M - 3/8M	1		84
NOV77MAC01	1/2M - 3/8M	1	19	38
NOV77MAC02	1/2M - 3/8M	1		84
NOV91MAC	1/2M - 1/2M	2		100
NOV92MAC	1/2M - 1/2M	1		84
NOV92MAC01	1/2M - 1/2M	1	19	38



Angle valve PN16 M-Compression VITAQ Metallic nova chromed handle - A-80

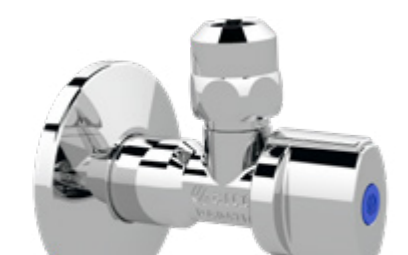


Temperature range: 0 — 95°  
Body material: Brass.

CODE	SIZE	ECROU		
NOV74MAC	1/2M - 3/8 X 10	Standard	1	84
NOV75MAC	1/2M - 3/8 X 10	Standard	2	100



Angle valve polished Chrome PN16 M-Compression VITAQ Metallic nova chromed handle - A-80

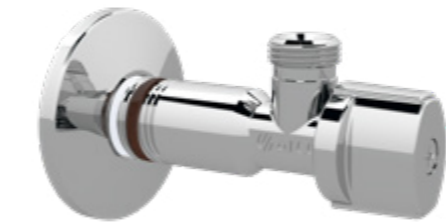


Temperature range: 0 — 95°  
Body material: Brass.

CODE	SIZE	ECROU		
NOV78MAC	1/2M - 3/8 X 10	Long	1	70



Angle valve ASAG PN16 M-M Thread VITAQ Metallic nova chromed handle - A-80

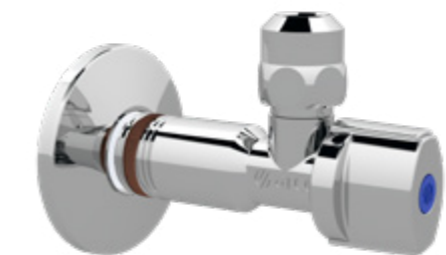


Temperature range: 0 — 95°  
Body material: Brass.

CODE	SIZE		
NOV81MAC	1/2M - 3/8M	2	100



Angle valve ASAG polished Chrome PN16 M-Compression VITAQ Metallic nova chromed handle - A-80

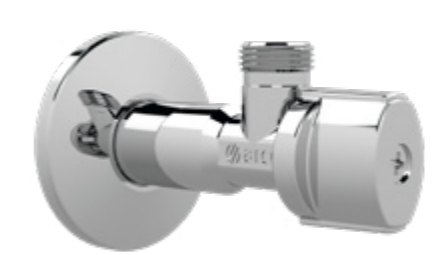


Temperature range: 0 — 95°  
Body material: Brass.

CODE	SIZE	ECROU		
NOV79MAC	1/2M - 3/8 X 10	Long	1	70



Long angle valve PN16 M-M Thread VITAQ Metallic nova chromed handle - A-80



Temperature range: 0 — 95°  
Body material: Brass.

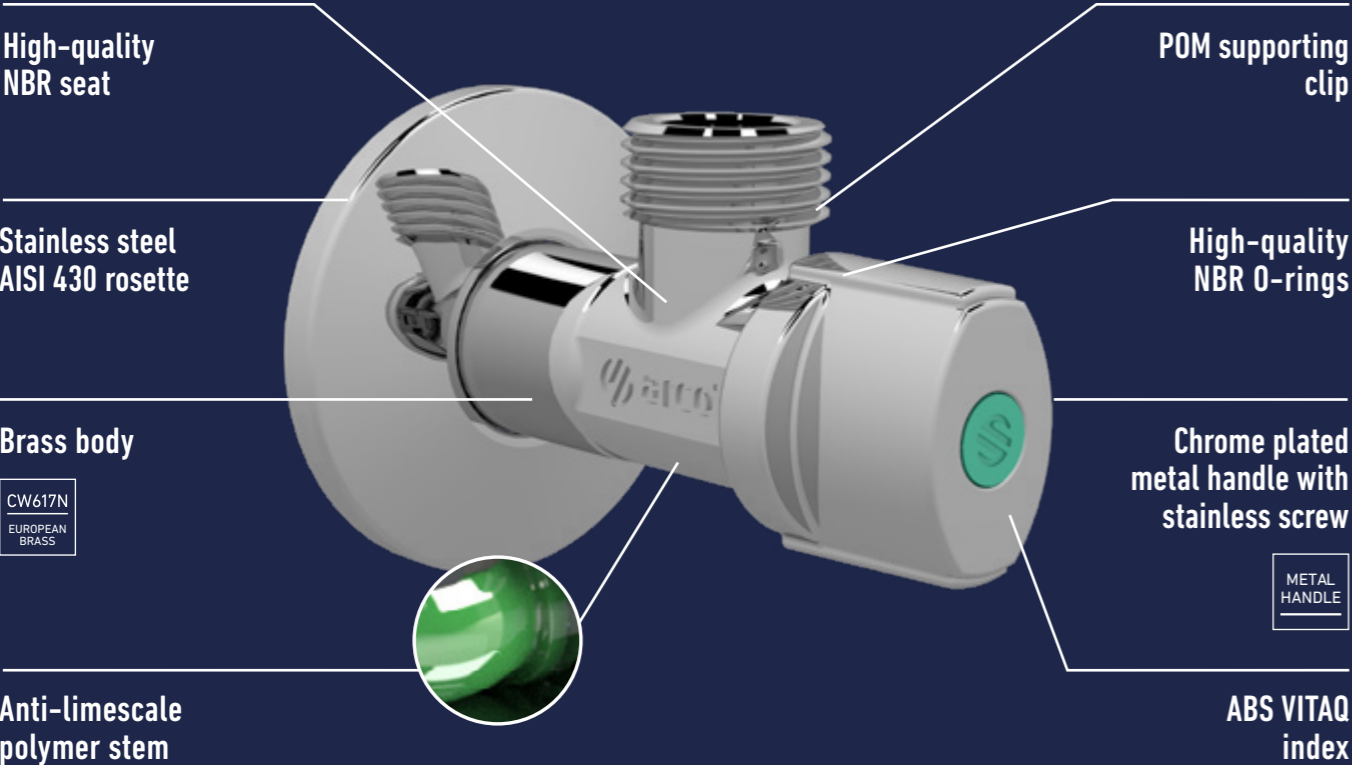
CODE	SIZE		
NOV88MAC	1/2M - 3/8M	1	42
NOV89MAC	1/2M - 1/2M	1	42





# A-80 X-Flow

## SPECIAL FOR THERMOS



MORE FLOW, SAME SIZE

Ref. NOV54MAC



Angle valves

Angle valve PN16 F-M Thread VITAQ ABS nova chromed handle - A-80



CODE	SIZE		
NV717AC	1/2F - 3/8M	1	100
NV718AC	1/2F - 1/2M	1	100



Temperature range: 0 — 95°  
Body material: Brass.

Angle valve PN16 Compression-Loose nut VITAQ ABS original chromed handle - A-80 F



CODE	SIZE			
00765	16X2 - 3/8LN	1	25	50



Temperature range: 0 — 95°  
Body material: Brass.

Angle valve PN16 M-Loose nut VITAQ ABS nova chromed handle - A-80



CODE	SIZE		
206563	1/2M - 1/2LN	1	84



Temperature range: 0 — 95°  
Body material: Brass.

Short angle valve PN16 M-Loose nut VITAQ ABS nova chromed handle - A-80



CODE	SIZE		
206560	1/2M - 1/2LN	1	84



Temperature range: 0 — 95°  
Body material: Brass.



Angle valve high flow PN16 M-M Thread VITAQ Metallic nova chrome handle -A-80



CODE	SIZE		
NOV54MAC	1/2M - 1/2M	1	50



Temperature range: 0 — 95°  
Body material: Brass.

Angle valve PN16 M-M Thread VITAQ ABS nova chromed handle - A-80 360°

Ensures an installation with the valve outlet in the desired position.



CODE	SIZE		
200101	1/2M - 3/8M	1	84



Temperature range: 0 — 95°  
Body material: Brass.

Angle valve DR Brass PN16 M-M Thread VITAQ nova ABS handle -A-80



CODE	SIZE		
DR06AC	1/2M - 1/2M	1	84



Temperature range: 0 — 95°  
Body material: DR Brass.



Dual angle valve with filter PN16 Thread VITAQ Metallic handle - Washing machine Dual



CODE	SIZE			
DUAL29	1/2M - 3/8M X 3/4M	1		40
DUAL2901	1/2M - 3/8M X 3/4M	1	6	12



Temperature range: 0 — 95°  
Body material: Brass.

Angle valve concealed cistern PN16 M-M Thread VITAQ ABS original green handle - A-80

VITAQ anti-lime system and 1/4 turn. Ideal for built-in cisterns.



CODE	SIZE		
201210	1/2M - 3/8M	30	60



Temperature range: 0 — 95°  
Body material: Brass.



# ANGLE VALVES L-85, L-86 and L-94

L-85, L-86 and L-94 series are 1/4 turn angle brass stem-ball valves designed for being connect to water pipe systems. They are used to shut off individually water supply to washing machines, dishwashers and other different water supply points to proceed to their repairing or replacement.

**COMBI VITAQ** angle valves combine 2 independent valves 1/4 turn in one single body and are used in plumbing installations.

**DUAL FILTER VITAQ:** 2 outlet valves are used to plumbing networks with just one outlet but is required 2 inlets, e.g:

a water tap and a dishwasher or a sink and a washer machine... These valves are operated by 1/4 turn and are used to shut off simultaneously water supply of both inlets to proceed to repair or replace them.



## Angle valves

**Double angle valve PN16 M-Compression VITAQ Metallic nova handle - Washing machine Combi**  
Great Arco Patent. Easy to install and very versatile for any application.



Temperature range: 0 — 95°  
Body material: Brass.

CODE	SIZE	ECROU		
COMB10MAC	1/2M - 1/2M X 3/8-10	Standard	1	40
COMB1MAC	1/2M - 3/4M X 3/8-10	Standard	1	40



**Double angle valve PN16 Thread VITAQ Metallic nova handle - Washing machine Combi**



Temperature range: 0 — 95°  
Body material: Brass.

CODE	SIZE			
COMB15MAC	1/2M - 1/2M X 1/2M	1		40
COMB5MAC	1/2M - 3/4M X 3/8M	1		20
COMB5MAC01	1/2M - 3/4M X 3/8M	1	10	20
COMB5MAC02	1/2M - 3/4M X 3/8M	1		10



**Angle check valve doble PN16 Thread VITAQ Metallic nova handle - Washing machine Combi**



CODE	SIZE		
COMB7MAC ⇄	1/2M - 3/4M X 3/8M	1	40
COMB9MAC ⇄	1/2M - 3/4M X 3/8M	1	40



Temperature range: 0 — 95°  
Body material: Brass.



Angle valve PN16 M-M Thread VITAQ ABS nova handle - Washing machine L-85



CODE	SIZE		
AC728A	1/2M - 3/4M	1	60
AC728A01	1/2M - 3/4M	1	13
AC728A02	1/2M - 3/4M	1	60



Temperature range: 0 — 95°  
Body material: Brass.

Angle valve PN16 M-M Thread VITAQ Metallic luxe handle - Washing machine L-85



CODE	SIZE		
728MLZ	1/2M - 3/4M	1	60



Temperature range: 0 — 95°  
Body material: Brass.

Angle valve PN16 M-M Thread VITAQ Metallic nova handle - Washing machine L-85



CODE	SIZE			
728MN	1/2M - 3/4M	1		60
728MN02	1/2M - 3/4M	1	15	30



Temperature range: 0 — 95°  
Body material: Brass.



Angle valve PN16 Loose nut-M X M Thread VITAQ - Washing machine ConeKta

Add an extra outlet effortlessly.



CODE	SIZE			
280010	3/8LN - 3/4M X 3/8M	1		84
28001001	3/8LN - 3/4M X 3/8M	1	10	20
28001003	3/8LN - 3/4M X 3/8M	1		19
280020	1/2LN - 3/4M X 1/2M	1		84
28002001	1/2LN - 3/4M X 1/2M	1		84



Temperature range: 0 — 95°  
Body material: Brass.

Angle valve PN16 M-M Thread VITAQ ABS nova handle - Washing machine L-86

Vertical handle allows access from above.



CODE	SIZE		
00729AC	1/2M - 3/4M	1	100



Temperature range: 0 — 95°  
Body material: Brass.

Angle valve PN16 M-M Thread VITAQ ABS nova handle - Washing machine L-86

Vertical handle allows access from above.



CODE	SIZE		
00725AC	1/2M - 3/4M	1	100



Temperature range: 0 — 95°  
Body material: Brass.



Angle valve PN16 F-M Thread VITAQ ABS nova handle - Washing machine

Vertical handle allows access from above.



CODE	SIZE		
NV728AC	1/2F - 3/4M	1	100



Temperature range: 0 — 95°  
Body material: Brass.

Angle valve PN16 M-M Thread VITAQ Metallic Chrome handle - Washing machine Filter

Vertical handle allows access from above.



CODE	SIZE		
02408MAC	1/2M - 3/4M	1	44



Temperature range: 0 — 95°  
Body material: Brass.

Angle check valve DR brass PN16 Loose nut-M Thread VITAQ Metallic nova handle - Washing machine



CODE	SIZE		
AS900	1/2LN - 3/4M	1	72



Temperature range: 0 — 95°  
Body material: DR Brass.



Angle check valve DR brass PN16 Loose nut-M Thread VITAQ Metallic nova handle - Washing machine

Ensures an installation with the valve outlet in the desired position.



CODE	SIZE		
AS901	1/2LN - 1/2M	1	72



Temperature range: 0 — 95°  
Body material: DR Brass.

Angle valve DR brass PN16 Loose nut-M X M Thread Metallic nova handle - Washing machine ConeKta



CODE	SIZE			
AS116	1/2LN - 1/2M X 1/2M	1	12	48
AS118	1/2LN - 3/4M X 1/2M	1		48



Temperature range: 0 — 95°  
Body material: DR Brass.

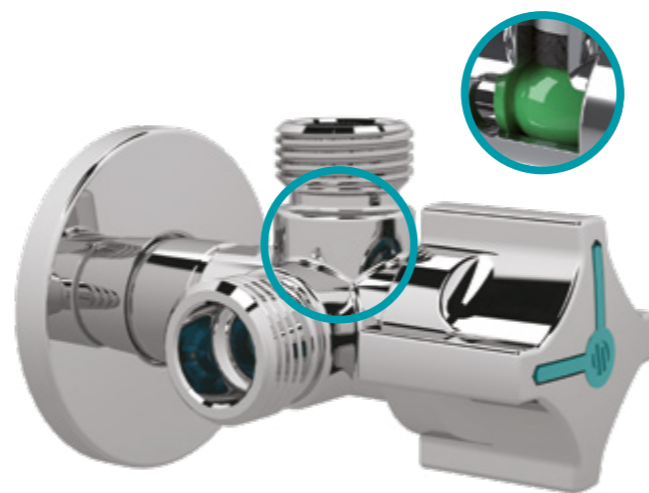
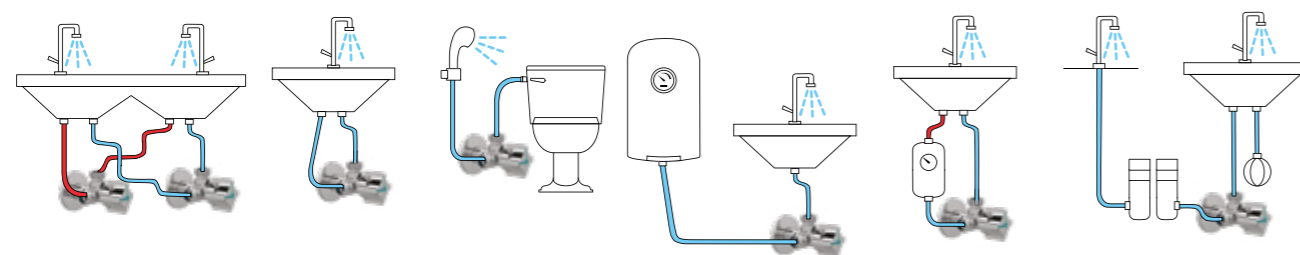


# A-80 TWIN VALVE

**Dual outlet angle valve. Four independent positions in a single control.**

- Easy installation. Easy manoeuvrability.
- 1/4 turn system.
- Drinking water and domestic hot water.
- Top quality: European brass.
- 100% Made in Spain.

**Additional solutions:**



Angle valves

## Angle valve PN10 M-M X M Thread VITAQ ABS chromed handle - A-80 Twin

Worldwide success: with a single handle you control the 2 outputs independently.



Temperature range: 0 — 95°  
Body material: Brass.

CODE	SIZE	1	42
CQ4102	1/2M - 3/8M X 3/8M	1	42
CQ4105	1/2M - 1/2M X 1/2M	1	42
CQ410501	1/2M - 1/2M X 1/2M	1	42



## Angle check valve PN10 M-M X M Thread VITAQ ABS chromed handle - A-80 Twin



Temperature range: 0 — 95°  
Body material: Brass.

CODE	SIZE	1	42
CQ4103	1/2M - 3/8M X 3/8M	1	42
CQ410302	1/2M - 3/8M X 3/8M	1	42



## Angle check valve PN10 M-M X M Thread VITAQ ABS chromed handle - A-80 Twin



Temperature range: 0 — 95°  
Body material: Brass.

CODE	SIZE	1	28
CQ4107	1/2M - 3/4M X 3/4M	1	28
CQ410701	1/2M - 3/4M X 3/4M	1	8

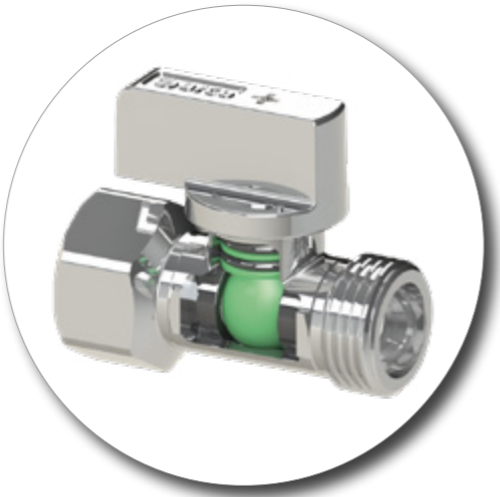




MINIS

These valves allow the individual shut off of sinks, basins, cisterns and other different water supply points to proceed to their repair or replacement. MINI series are 1/4 turn valves.

They allow the shut-off of the water supply to basins, sinks, cisterns, and other supply points to proceed to their repair or replacement. These are 1/4 turn valves.



Mini ball valves

Ball valve PN16 M-M Thread VITAQ Metallic chromed handle - Mini Filter

Protect the faucet with a filter.



CODE	SIZE			
02402MAC	1/2M - 3/8M	1		44
02402MAC02	1/2M - 3/8M	1	18	36
02402MAC03	1/2M - 3/8M	2	8	16
02400MAC	1/2M - 1/2M	1		44
02400MAC01	1/2M - 1/2M	1		44
02400MAC02	1/2M - 1/2M	1	18	36



Temperature range: 0 — 95°  
Body material: Brass.

Ball valve PN16 M-F Thread VITAQ Metallic chromed handle - Mini



CODE	SIZE			
201015	1/2M - 1/2F	5	50	100
20101501	1/2M - 1/2F		5	50



Temperature range: 0 — 95°  
Body material: Brass.

Garden taps

Double garden tap PN16 Thread VITAQ Green handle - Garden Nano double

One-piece body makes this double tap very strength.



Temperature range: 0 — 90°  
Body material: Brass.

CODE	SIZE		
00472	1/2M - 3/4M X 3/4M-15		30
0047201	1/2M - 3/4M X 3/4M-15	6	12
00474	1/2M - 3/4M X 3/4M-15		30



Double garden tap with check valve F Chromed DR brass PN16 Thread VITAQ Metallic chromed handle - Garden Nano double

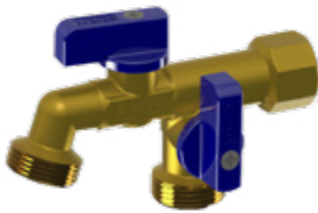


Temperature range: 0 — 90°  
Body material: DR Brass.

CODE	SIZE		
AS462	1/2F - 3/4M X 3/4M	7	21



Double garden tap with check valve F DR brass PN16 Thread VITAQ Metallic blue handle - Garden Nano double



Temperature range: 0 — 90°  
Body material: DR Brass.

CODE	SIZE		
AS452	1/2F - 3/4M X 3/4M	7	21



GARDEN  
TAPS

JARDIN series are metallic ball valves that, due to their design and materials are intended to be used in outdoor plumbing networks like gardens, terraces, etc.

The NANO VITAQ taps are particularly suitable for withstanding the effects of limescale on valves, extending their service life. Likewise, their compact size also makes them ideal for outdoor and indoor installations. They offer two independent outlets from one single water inlet.

Solid hot-stamped one-piece body. Made of European brass CW617N 4Ms. Quarter turn maneuver.



# LIFE by Ferrer

## GARDEN TAP



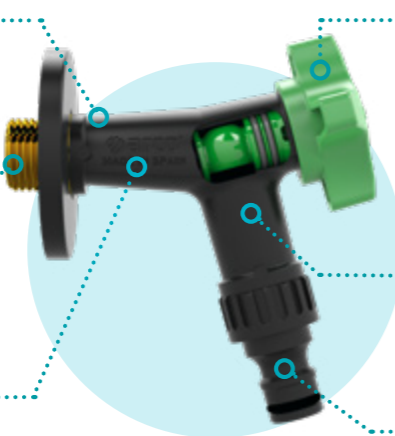
## A NEW CONCEPT OF FUNCTIONALITY AND DESIGN

GRIFO LIFE 1/2M – Ref. 105510

Tap manufactured with highly resistant technical polymers.

Nickel-free and environmentally-friendly.

Two types of operation with higher and lower flow rates.



Reversible right and left opening system.

1/4 turn VITAQ system with double safety seal.



Quick connection nozzle for garden hoses with an integrated aerator.



LIFE tap by Ferrer Product designed and registered by Jose Ferrer, president and founder of Arco.

*Dale vida a tu jardín!*  
Bring your garden to life!



## Garden taps

### Double garden tap with check valve M Chromed DR brass PN16 Thread VITAQ Metallic chromed handle - Garden Nano double



CODE	SIZE		
AS463	1/2M - 3/4M X 3/4M	7	21
AS461	3/4M - 1M X 1M		12



Temperature range: 0 — 90°  
Body material: DR Brass.

### Double garden tap with check valve M DR brass PN16 Thread VITAQ Metallic blue handle - Garden Nano double



CODE	SIZE		
AS453	1/2M - 3/4M X 3/4M	7	21
AS451	3/4M - 1M X 1M		12



Temperature range: 0 — 90°  
Body material: DR Brass.

### Garden tap PN16 Thread VITAQ Green handle - Garden Nano



CODE	SIZE		
00460	1/2M - 1/2M X 15		48
0046001	1/2M - 1/2M X 15	12	24
00462	1/2M - 3/4M X 15		48



Temperature range: 0 — 90°  
Body material: Brass.



Garden tap with check valve Chromed DR brass PN16 F-M Thread VITAQ Metallic chromed handle - Garden Nano



Temperature range: 0 — 90°  
Body material: DR Brass.

CODE	SIZE		
AS464	↔ 1/2F - 3/4M	14	42



Garden tap with check valve Chromed DR brass PN16 M-M Thread VITAQ Metallic chromed handle - Garden Nano

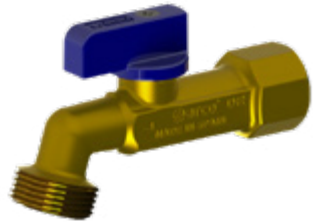


Temperature range: 0 — 90°  
Body material: DR Brass.

CODE	SIZE		
AS465	↔ 1/2M - 3/4M	14	42
AS466	↔ 3/4M - 1M	7	21



Garden tap with check valve DR brass PN16 F-M Thread VITAQ Metallic blue handle - Garden Nano



Temperature range: 0 — 90°  
Body material: DR Brass.

CODE	SIZE		
AS454	↔ 1/2F - 3/4M	14	42



Garden tap with check valve DR brass PN16 M-M Thread VITAQ Metallic blue handle - Garden Nano



Temperature range: 0 — 90°  
Body material: DR Brass.

CODE	SIZE		
AS455	↔ 1/2M - 3/4M	14	42
AS456	↔ 3/4M - 1M	7	21



BALL VALVES

Manually operated metallic ball valves, by its design and raw materials are intended to be used in:

- Drinking water networks.
- Water supply connection.
- Plumbing networks.
- Hot water networks.
- Heating systems.

In general all those applications where it is required a valve to stop the fluid supply, assuring the leaktightness in accordance to the working conditions.





Double stem ball valve PN16 with flanges VITAQ Black lever black cover - Tajo PRO



Temperature range: -20 — 140°  
Body material: Brass.

CODE	SIZE	
01040AC	3 - 3	1
01042AC	4 - 4	1



Double stem ball valve PN50 F-F Thread VITAQ Black lever black cover - Tajo PRO

Double stem. Zero problems.



Temperature range: -20 — 140°  
Body material: Brass.

CODE	SIZE	
01035AC	2F - 2F	2
01036AC	2 1/2F - 2 1/2F	2
01038AC	3F - 3F	1



Ball valve PN50 F-F Thread VITAQ Stainless steel lever green cover - Tajo 2000



Temperature range: -20 — 140°  
Body material: Brass.

CODE	SIZE		
00005AC	1/2F - 1/2F	25	50
00005AC01	1/2F - 1/2F	18	36
00006AC	3/4F - 3/4F	20	40
00006AC01	3/4F - 3/4F	15	30
00007AC	1F - 1F	10	20
00007AC01	1F - 1F	8	16
00008AC	1 1/4F - 1 1/4F	6	12
00009AC	1 1/2F - 1 1/2F	4	8
00010AC	2F - 2F	2	4
00011AC	2 1/2F - 2 1/2F	2	4



Straight ball valve PN16 F-F Thread VITAQ Square 30 handle - Sil



Temperature range: 0 — 65°  
Body material: Brass.

CODE	SIZE		
C1233AC	1/2F - 1/2F	18	36
C1234AC	3/4F - 3/4F	12	24
C1235AC	1F - 1F	10	20
C1236AC	1 1/4F - 1 1/4F	6	12
C1237AC	1 1/2F - 1 1/2F	4	8
C1238AC	2F - 2F	2	4



Angle valve PN16 DN20 Flange-Thread 3/4 left VITAQ Blue butterfly handle - Sil



Temperature range: 0 — 65°  
Body material: Brass.

CODE	SIZE		
BAT18AST	Bride SIL - 3/4 Left M	8	16





Angle check valve PN16 DN20 Thread 3/4 left-M Blue butterfly handle - Sil



Temperature range: 0 — 65°  
Body material: Brass.

CODE		SIZE	ECROU		
BAT22AST	→↗	3/4 Left M - 1M	1/2 Manometer Socket	10	20
BAT23AST	→↗	3/4 Left M - 1M		10	20



Water Pack Sil



Temperature range: 0 — 65°  
Body material: Brass.

CODE		SIZE		
WP003	→↗	See detail - See detail	4	8
WP005	→↗	See detail - See detail	4	8

CODE	ITEM	SIZE	UNITS
WP003	BAT18AST	SIL Flange - 3/4 Left M	1
WP003	BAT22AST	3/4 Left M - 1M	1
WP005	SEBAT18F	SIL Flange - 3/4 Left M	1
WP005	SEBAT22F	3/4 Left M - 1M	1
WP005	04554	3/4 Left F - 7/8F	1



Embedded ball valve PN30 F-F Thread VITAQ - Texas



Temperature range: -20 — 120°  
Body material: Brass.

CODE	SIZE		
36105AC	1/2F - 1/2F	5	20
36110AC	3/4F - 3/4F	5	20



Non-return valves

Check valve PN16 F-F Thread VITAQ - Stop



Temperature range: 0 — 85°  
Body material: Brass.

CODE		SIZE		
191203	→↗	1/2F - 1/2F	45	90
191204	→↗	3/4F - 3/4F	24	48
191205	→↗	1F - 1F	18	36
191206	→↗	1 1/4F - 1 1/4F	12	24
191207	→↗	1 1/2F - 1 1/2F	6	12
191208	→↗	2F - 2F	3	6
191209	→↗	2 1/2F - 2 1/2F	2	4





## PLUMBING MANIFOLDS

The anti-lime modular and metallic manifolds have been designed to be used in centralized plumbing systems. Each module allows the individual shut off the different water supply points, to proceed to their repairment or replacement.

All manifolds' valves include **VITAQ SYSTEM** anti-lime solution, preventing from the negative effects of lime in the valves.



### Manifolds

#### Manifold ASAG for multilayer tube PN16 M-F - Compression VITAQ - Manifolds



CODE	SIZE	
38030	3/4M X 3/4F - 2 ways 16X2	16
38130	3/4M X 3/4F - 3 ways 16X2	12



Temperature range: 0 — 95°  
Body material: Brass.

#### Modular manifold (central module) for multilayer tube PN10 VITAQ - Manifolds Series 1

Make easily the manifold you need.



CODE	SIZE	
40100	Quick connection M X F - 1 way 16X2	25



Temperature range: 0 — 85°  
Body material: Plastic.

#### Modular manifold (central module) PN10 M VITAQ - Manifolds Series 1



CODE	SIZE	
40105	Quick connection M X F - 1 way 1/2M	25
40115	Quick connection M X F - 1 way 3/4M	25



Temperature range: 0 — 85°  
Body material: Plastic.



Hand Shower Set + Twin dual outlet valve



CODE	SIZE	
WP014	1/2M - 3/8M X 3/8M + adapter 1/2M	6

CODE	ITEM	SIZE	UNITS
WP014	SECQ4103MF	1/2M - 3/8M X 3/8M	1
WP014	AC0199010	Chromed support	1
WP014	AC0199020	Flexible gray 120cm	1
WP014	AC0199030	Chromed Shattaf ABS	1



Temperature range: 0 — 95°  
Body material: Brass.

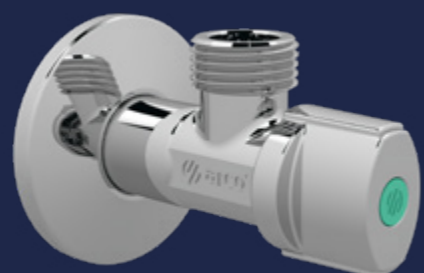
SPECIALIZED IN  
THE DESIGN AND  
PRODUCTION OF  
WATER, GAS AND  
HEATING INSTALLATION  
SYSTEMS



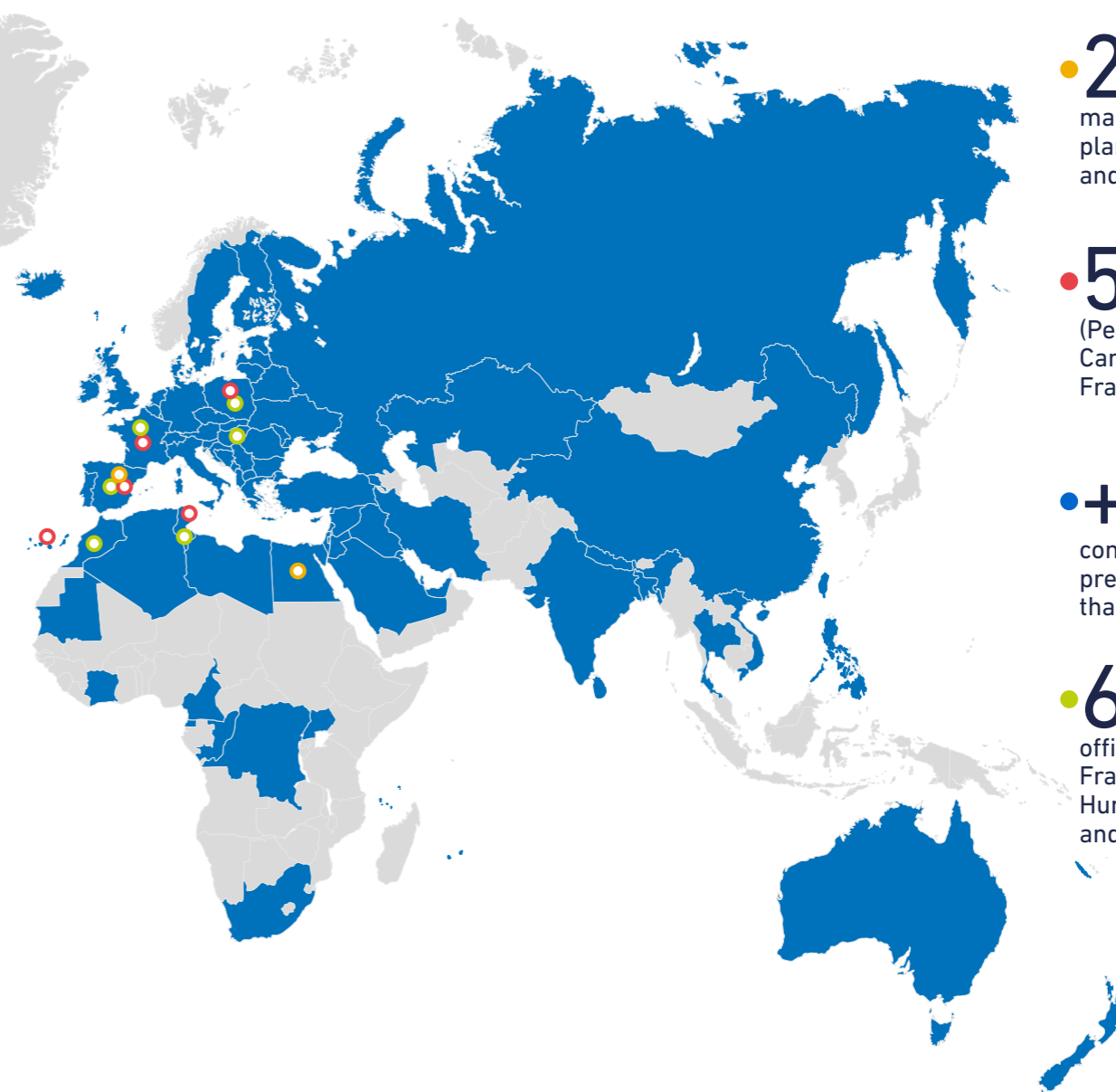
+ OVER  
45 YEARS OF  
EXPERIENCE

# INTERNATIONAL PRESENCE

We create solutions that improve the overall performance of installations and make the work of professionals easier, giving them confidence and guaranteeing the correct operation of our products in the most demanding conditions.



**PRESENT  
IN MORE  
THAN 90  
COUNTRIES  
WORLDWIDE.**



- **2** own manufacturing plants (in Spain and Tunisia)
- **5** logistics centres (Peninsula (Valencia), Canary Islands, Poland, France and Tunisia)
- **+90** commercial presence in more than 90 countries
- **6** commercial offices (in Spain, France, Poland, Hungary, Morocco and Tunisia)

- **+ 1.000 million** valves installed across the world.
- **34** million pieces sold every year.
- **+ 300** million A-80 valves sold in the world.





Válvulas Arco S.L.

Av. del Cid, 16  
46134 | Foios | Valencia | Spain

CUSTOMER SERVICE [customerservice@valvulasarco.com](mailto:customerservice@valvulasarco.com)  
Tel: +34 961 499 429

[www.valvulasarco.com](http://www.valvulasarco.com)



made in  
**spain**  
original