

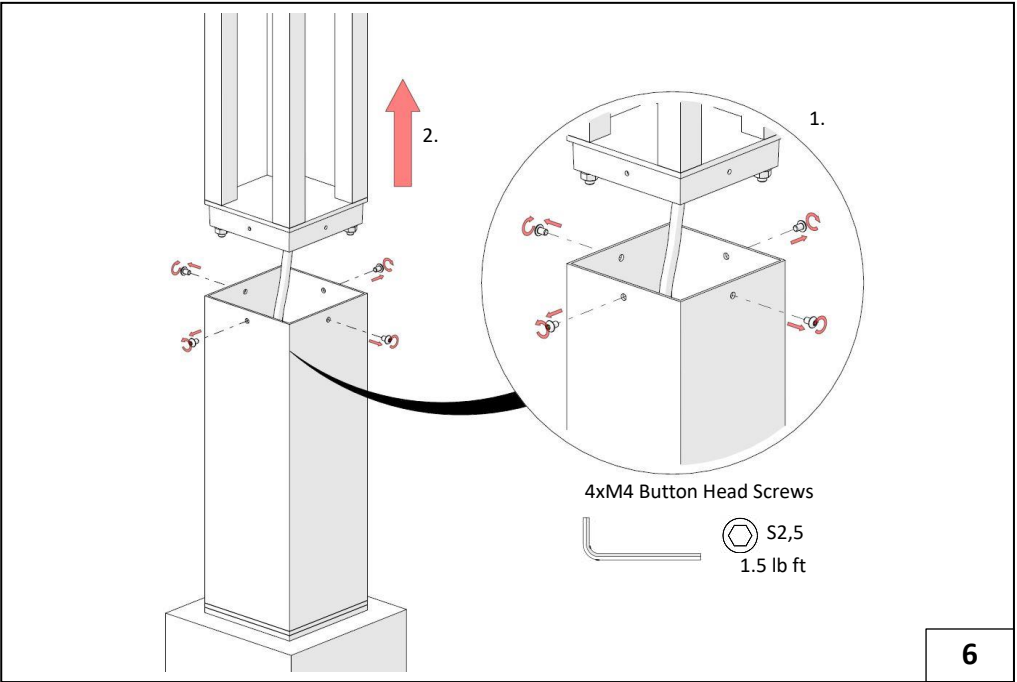
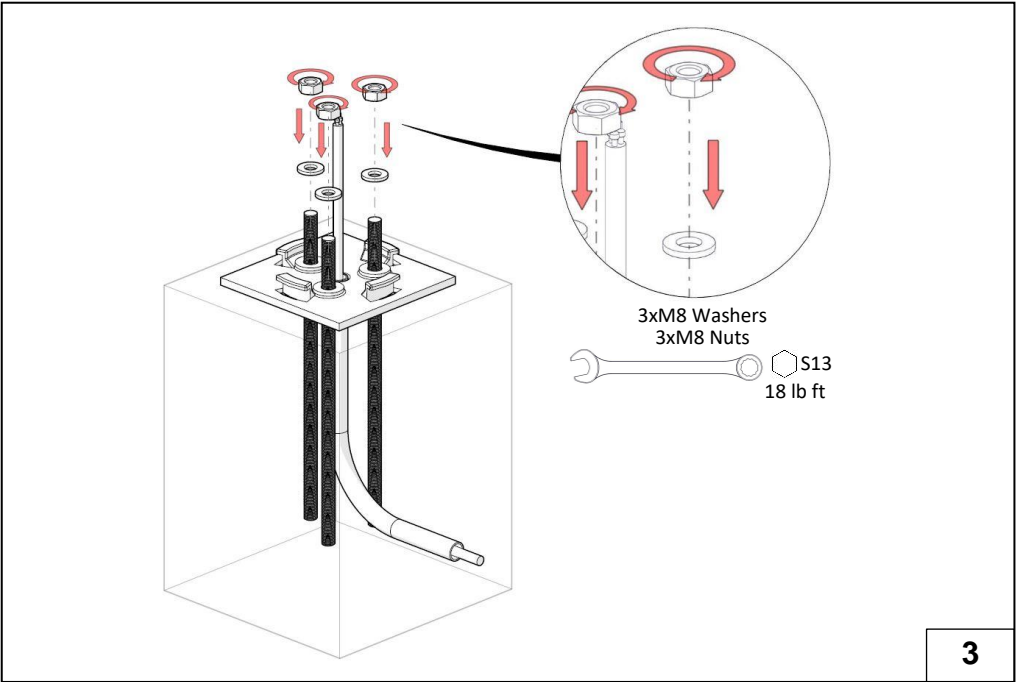
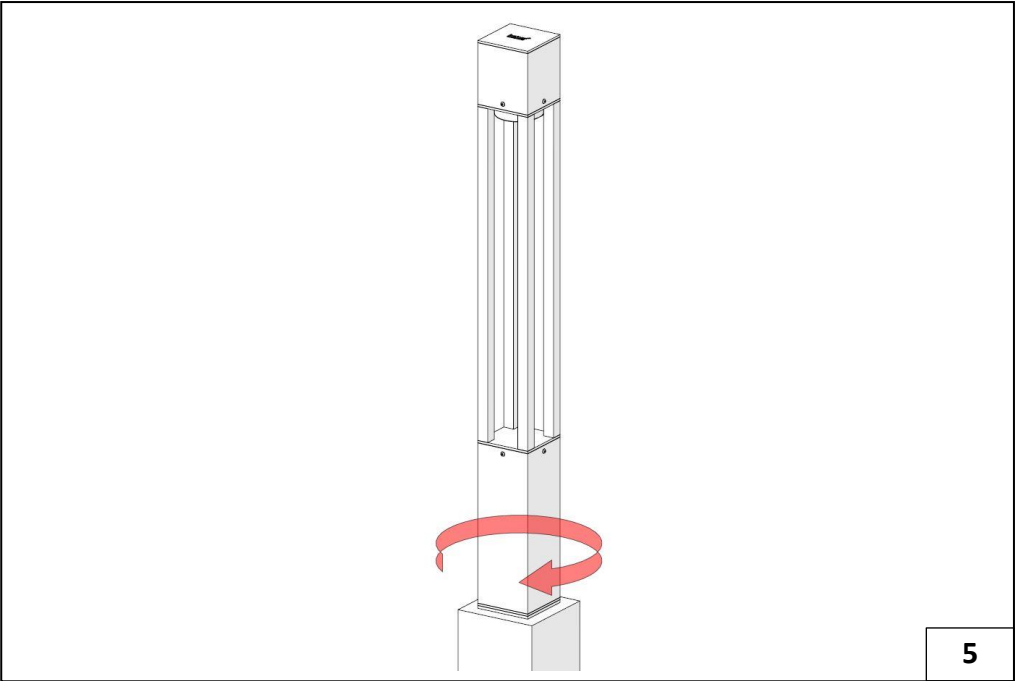
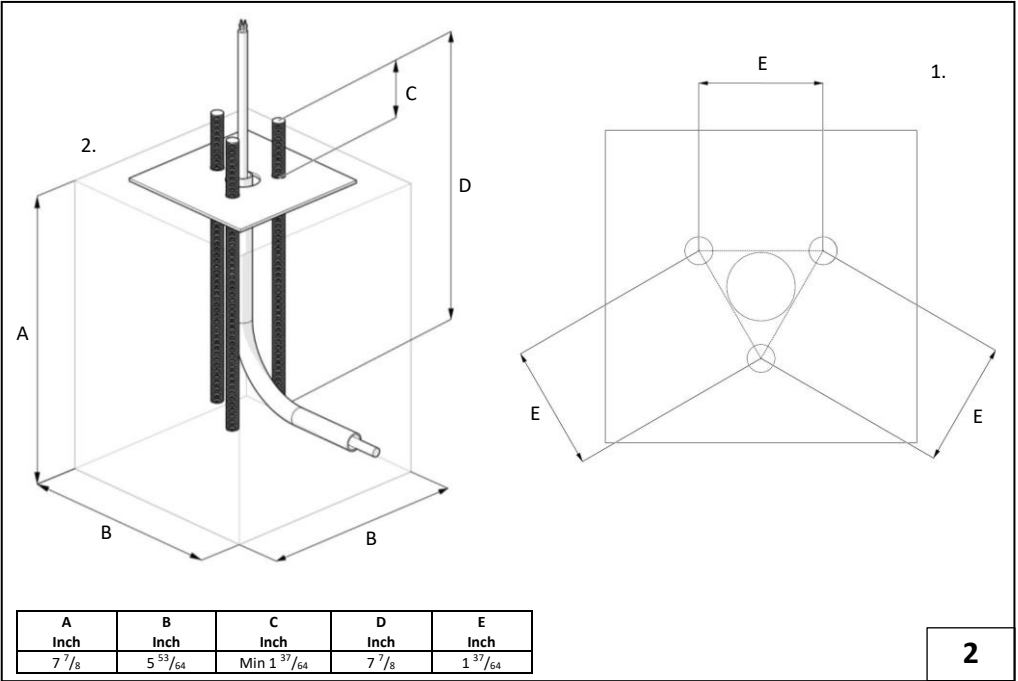
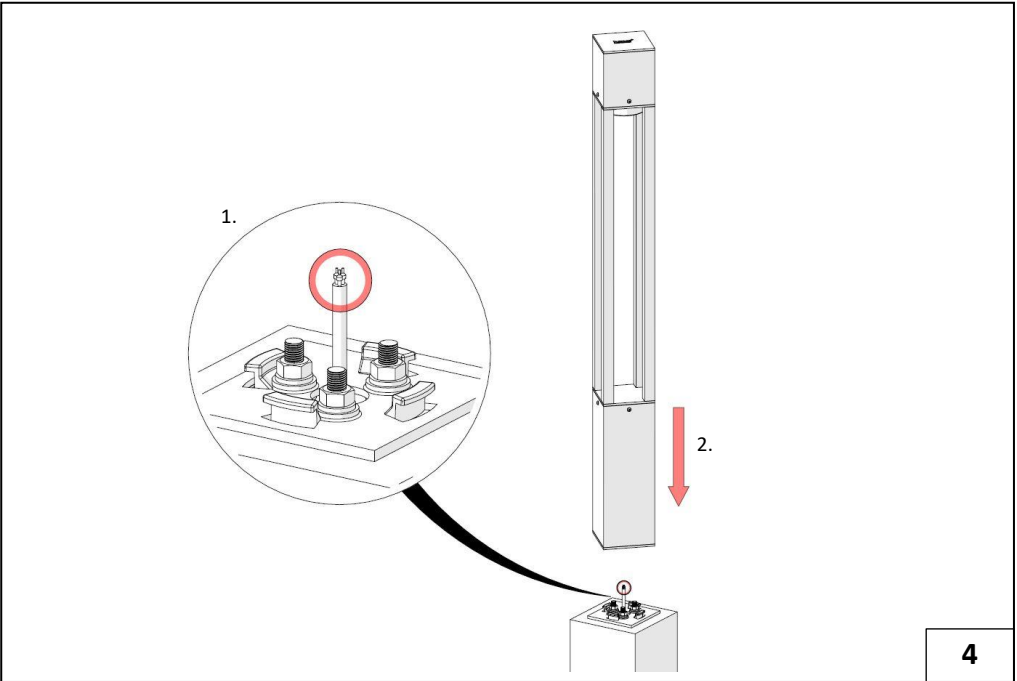
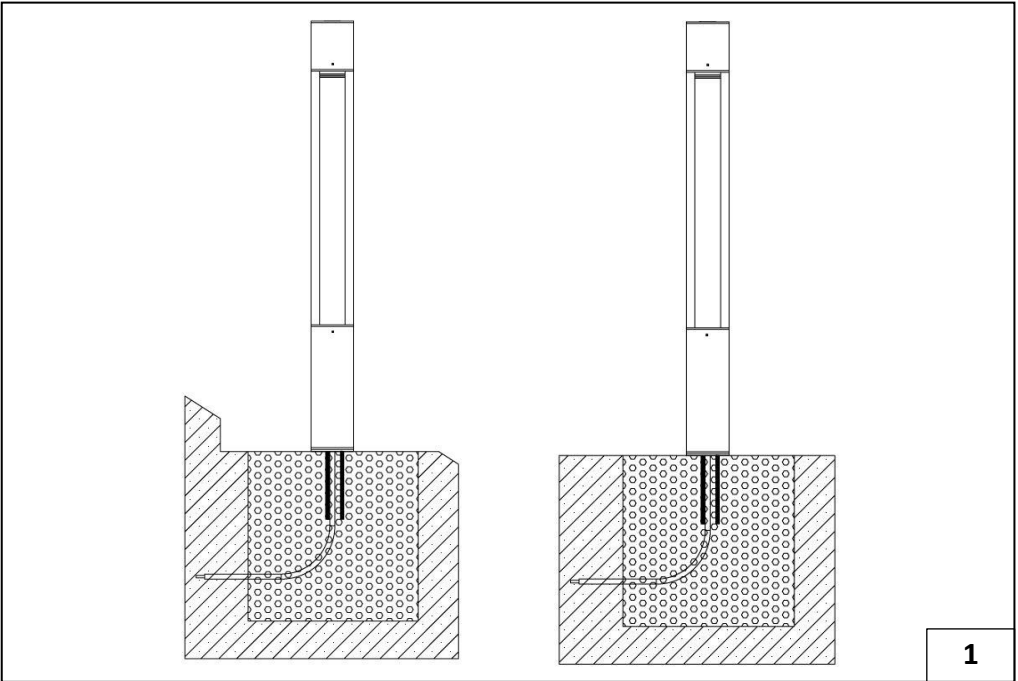


HEPER USA, LLC

W227 N546 Westmound Drive  
Waukesha, WI 53186 - USA

Tel: +1 917 244 2032  
infoUS@hepergroup.com  
www.heperlighting.com

**NORMA S**  
Installation&Maintenance Instructions



ASSEMBLY INSTRUCTIONS

Mounting product to foundation:

1. The surface to which the bollards will be mounted must be flat and level.
2. Concrete detail;
- 2.1 Utilize anchor bolt template to ensure alignment with base plate mounting pattern.
- 2.2 Install anchor bolt/stud with minimum 1 33/64" projection above concrete.
- 2.3 Once anchor bolts are set, remove anchor bolt template and install 4 M8 leveling nuts one on each anchor bolt.
3. Place base plate onto anchor bolts/studs. Install 3 flat washers and secure with quantity of 3 M8 Nuts one set of washers and nuts per anchor bolt. Tighten to 18 lb-ft of torque.
- 4.1 Make certain to pull an appropriate length of supply power feed cable into the base of the bollard.
- 4.2 Place bollard body onto base plate skewed 45 degrees making certain the supply wiring/cable is not pinched in the process.
5. Secure bollard to base plate by rotating bollard one-quarter turn clockwise onto base plate. Make certain bollard is securely locked into place.

Making electrical connection;

Note: To avoid the risk of electrocution, ensure power has been turned off at the supply before installing or maintaining this product.

- 6.1 Remove the bolts securing the upper portion of the bollard to the lower compartment. (4 pieces, M4 button head 2.5 hex key bolts)
- 6.2 Carefully remove the upper assembly from lower electrical compartment.  
Note: Power connection has been made at the factory from the upper LED module and optic chamber to the driver/splice box. Make certain those connections are not damaged.
- 7.1 Remove 2 pieces, M4 button head 2.5 hex key bolts securing driver assembly splice box to lower compartment of bollard.
- 7.2 Lift upper bollard component to remove driver assembly splice box from lower compartment.
- 8.1 Retrieve adequate length of supply power feed cable provided in step 4.1 from base of bollard.
- 8.2 Remove 4 M3.5 countersunk Phillips head screws holding driver/splice box cover in place.
- 9.1 Utilize Greenlee punch to create appropriate size hole in driver/splice box for waterproof strain relief to accommodate supply power feed cable. (Note: Greenlee punch, waterproof cable strain relief and supply cable provided by others)
- 9.2 Feed power cable through strain relief (provided by others). Make all electrical connections inside driver/splice box following all applicable local and National Electrical Codes.  
Note: After the electrical connections are completed, step 8 is operated in reverse to close the aluminum driver/splice box. The countersunk phillips head screws that secure the cover should be tightened to 1.1 lb-ft of torque (4 pieces M3.5 countersunk Phillips head screws).
- 10.1 Replace driver/splice box assembly in base compartment of bollard.
- 10.2 Replace (2) pieces, M4 button head 2.5 hex key bolts securing driver assembly splice box to lower compartment of bollard. Tighten to 1.5 lb-ft of torque.
- 11.1 Replace upper portion of bollard onto lower electrical compartment.
- 11.2 Replace the bolts securing the upper portion of the bollard to the lower compartment. (4 pieces, M4 button head 2.5 hex key bolts). Tighten to 1.5 lb-ft of torque.

IMPORTANT ⚠

- To ensure secure connection, the luminaire housing must be positioned precisely in relation to the mounting plate.
- **Cleaning And Maintenance**  
Clean luminaire regularly with solvent-free cleaners from dirt. Please do not do not clean the luminaire with using high-pressure liquids.

