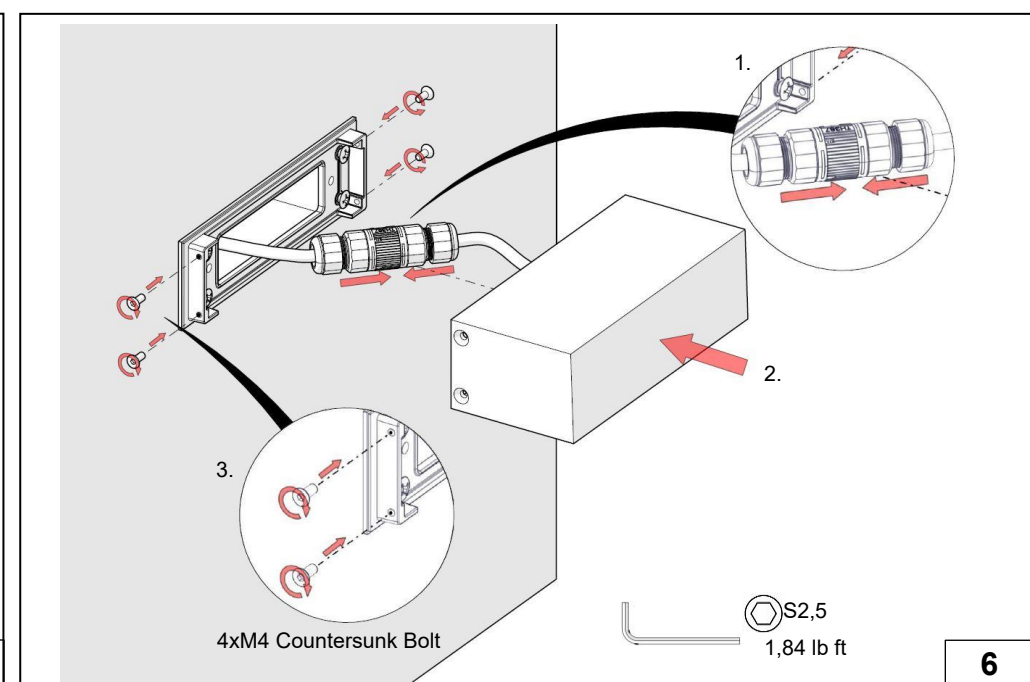
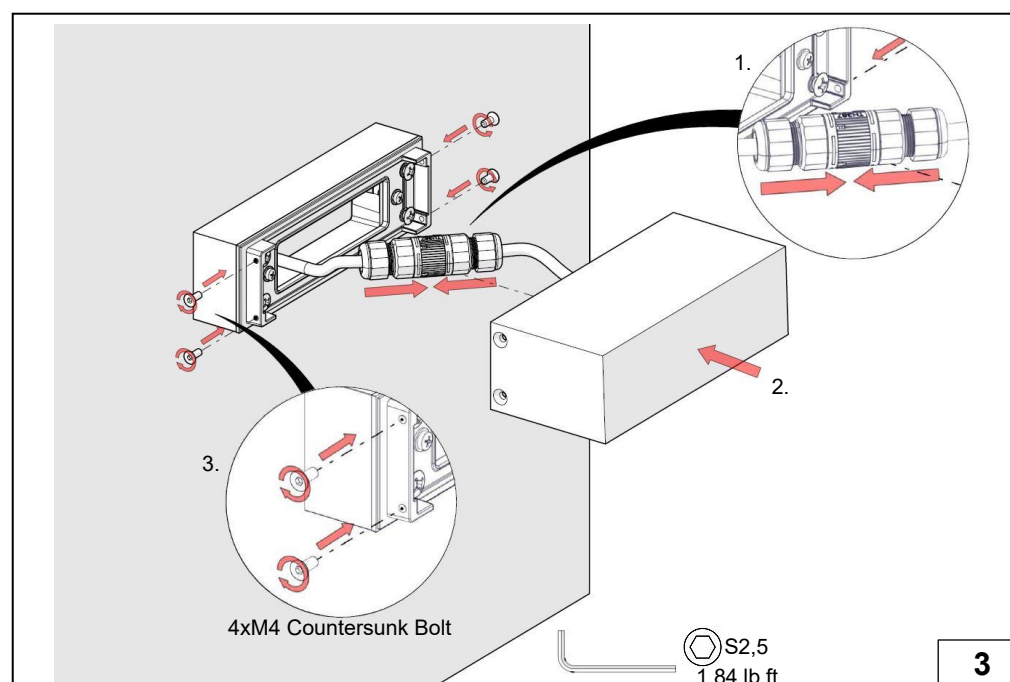
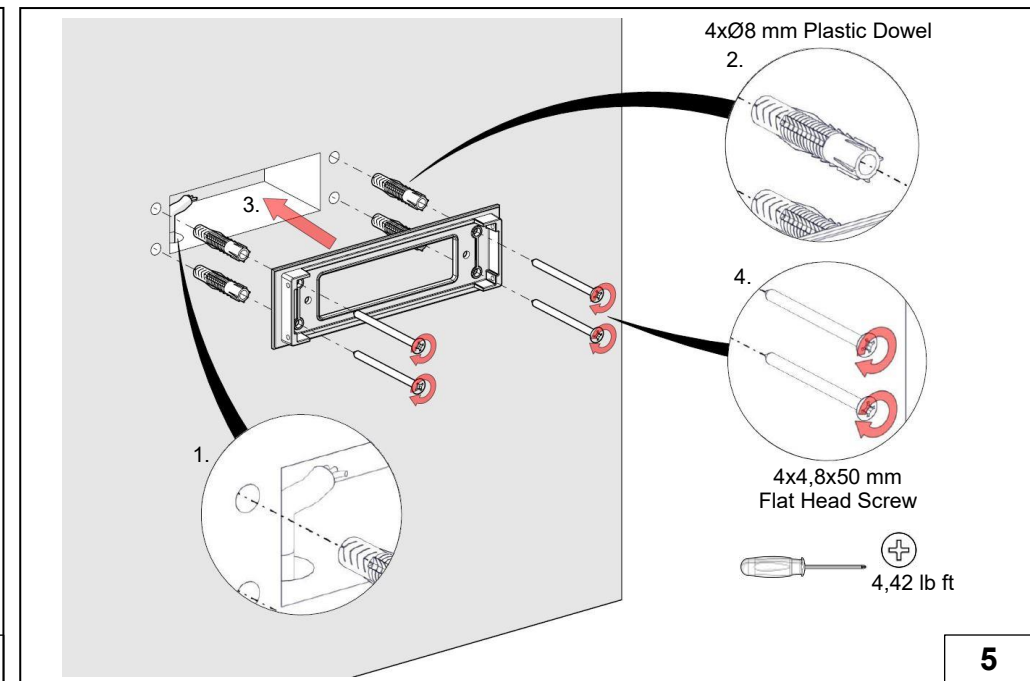
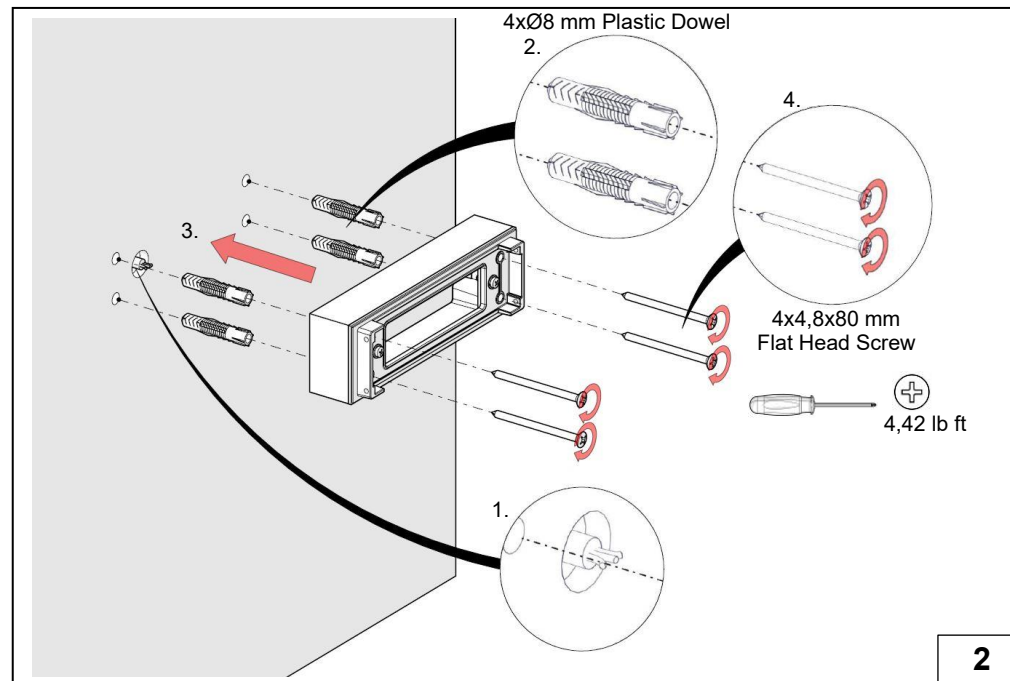
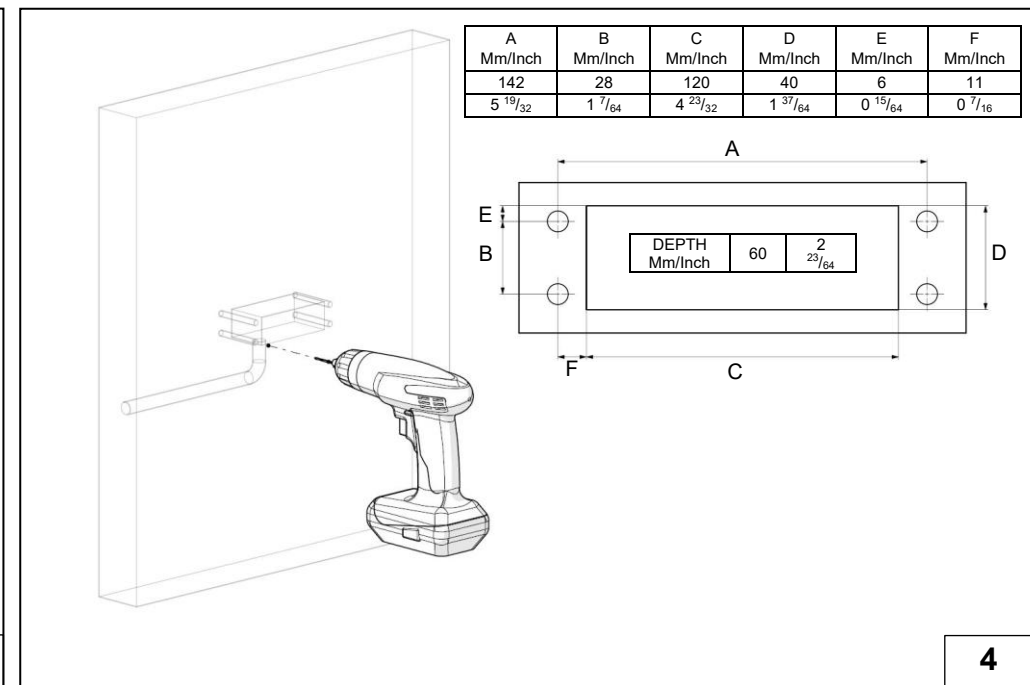
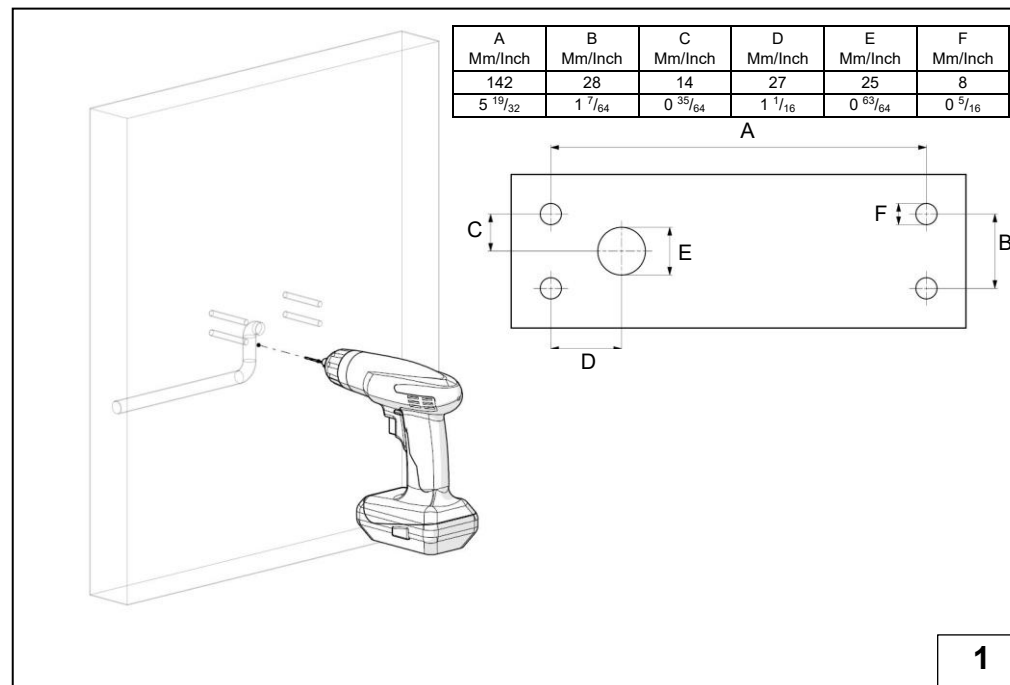




HEPER USA LLC  
 W227 N546 Westmound Drive  
 Waukesha  
 WI 53186 – USA  
 Tel: +1 917 244 20 32  
 info@hepergroup.com  
 www.heperlighting.com

**DOGO**  
 Installation & Maintenance Instructions



**ASSEMBLY INSTRUCTIONS**

**The assembly of the product to flat wall;**

1. The holes that connect the luminaire to the wall and electrical cable holes are drilled.
2. The assembly of the connecting apparatus to the wall;
  - 2.1. It should be noted that electrical cable can be reachable to assembler.
  - 2.2. Plastic dowels are nailed to the existed holes( 4xØ8 Plastic dowels )

Note: Any damage to the plastic dowels must be avoided.
- 2.3. The connecting apparatus is aligned to the wall taking the holes as reference.
- 2.4. The connecting apparatus is screwed to the wall applying 6Nm torque. ( 4x4,8x80 Flat Head Screw )
3. The assembly of the luminaire to the connecting apparatus;
  - 3.1. The cable coming from the wall and cable that comes out from the luminaire are linked with connector.
 

Note:HEPER does not provide the connector.  
Please acquire an IP66 connector.
  - 3.2. The luminaire is settled onto connecting aparatus.
  - 3.3. The Countersunk Bolts are screwed applying 1,84 lb ft torque.(4xM4 Countersunk Bolts )

**The assembly of the product to slotted wall;**

4. The holes that connect the luminaire to the wall and electrical cable holes are drilled.
5. The assembly of the connecting apparatus to the wall;
  - 5.1. It should be noted that electrical cable can be reachable to assembler.
  - 5.2. Plastic dowels are nailed to the existed holes( 4xØ8 Plastic dowels )

Note: Any damage to the plastic dowels must be avoided.
- 5.3. The connecting apparatus is aligned to the wall taking the holes as reference.
- 5.4. The connecting apparatus is screwed to the wall applying 4,42 lb ft torque. (4x4,8x80 Flat Head Screw)
6. The assembly of the luminaire to the connecting apparatus;
  - 6.1. The cable coming from the wall and cable that comes out from the luminaire are linked with connector.
 

Note:HEPER does not provide the connector.  
Please acquire an IP66 connector.
  - 6.2. The luminaire is settled onto connecting aparatus.
  - 6.3. The Countersunk Bolts are screwed applying 1,84 lb ft torque.(4xM4 Countersunk Bolts )
7. Luminaire is ready to use.

**8. To replace the LED Driver;**

9. Dismantling the luminaire;
  - 9.1. The Countersunk Bolts are screwed off (4xM4 Countersunk Bolts )
 

Not : After the replacement of LED Driver, the countersunk bolts are screwed applying 1,84 lb ft torque (4xM4 Countersunk Bolts ).
  - 9.2. Luminaire is taken out.
  - 9.3. The cable coming from the wall and cable that comes out from the luminaire are separated.
 

Note:HEPER does not provide the connector.  
Please acquire an IP66 connector.
  9. To remove the rear cover of the product;
    - 9.1. The Countersunk Bolts holding the rear cover are screwed off.(4xM4 Countersunk Bolts)
    - 9.2. Rear cover is taken out.

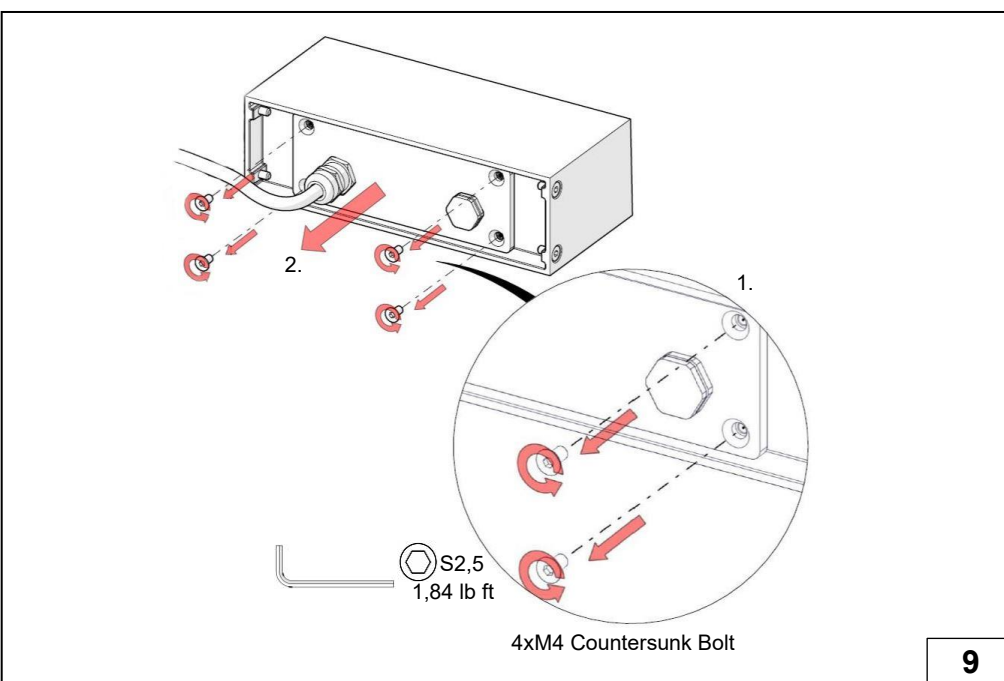
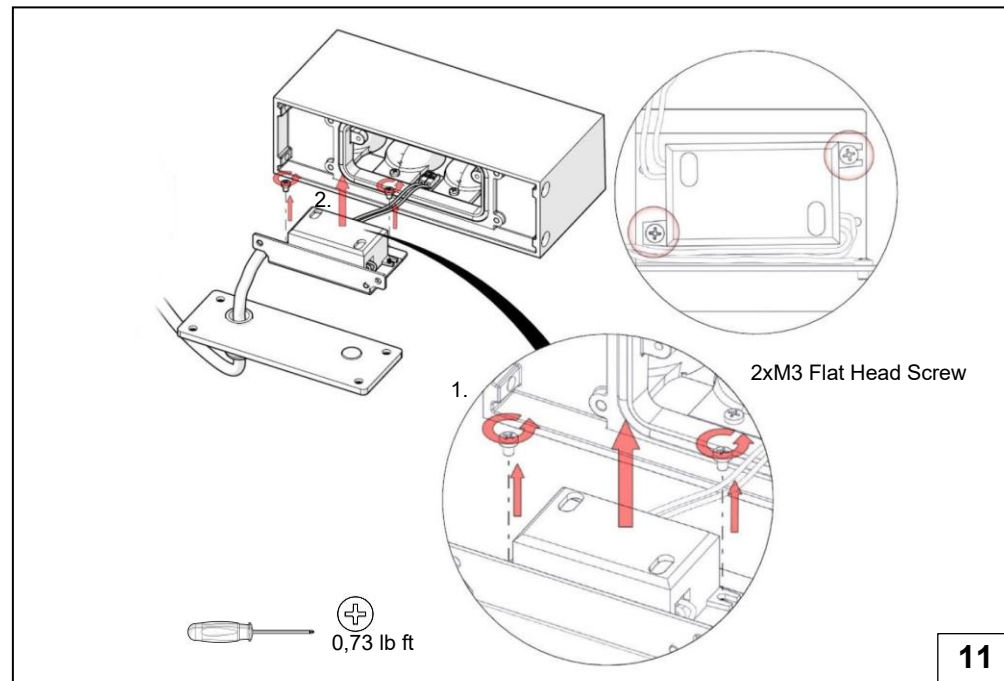
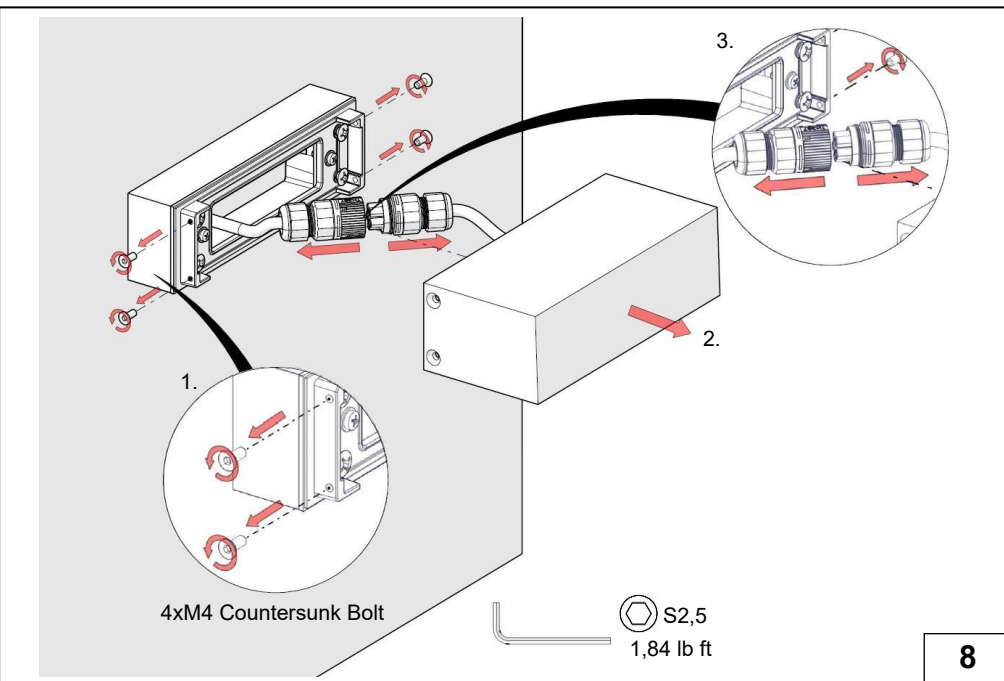
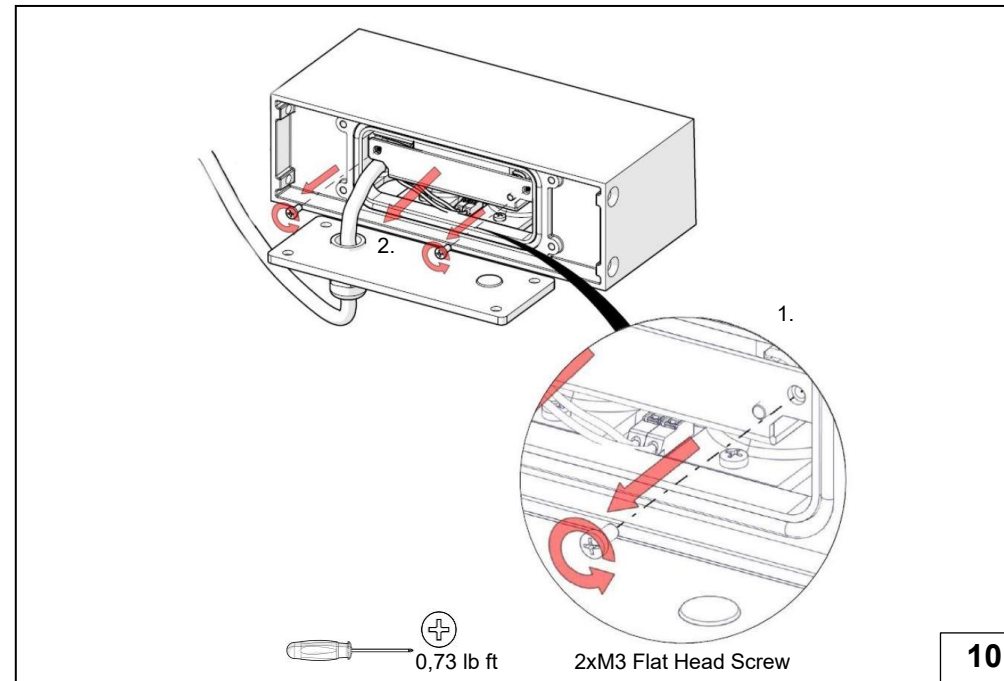
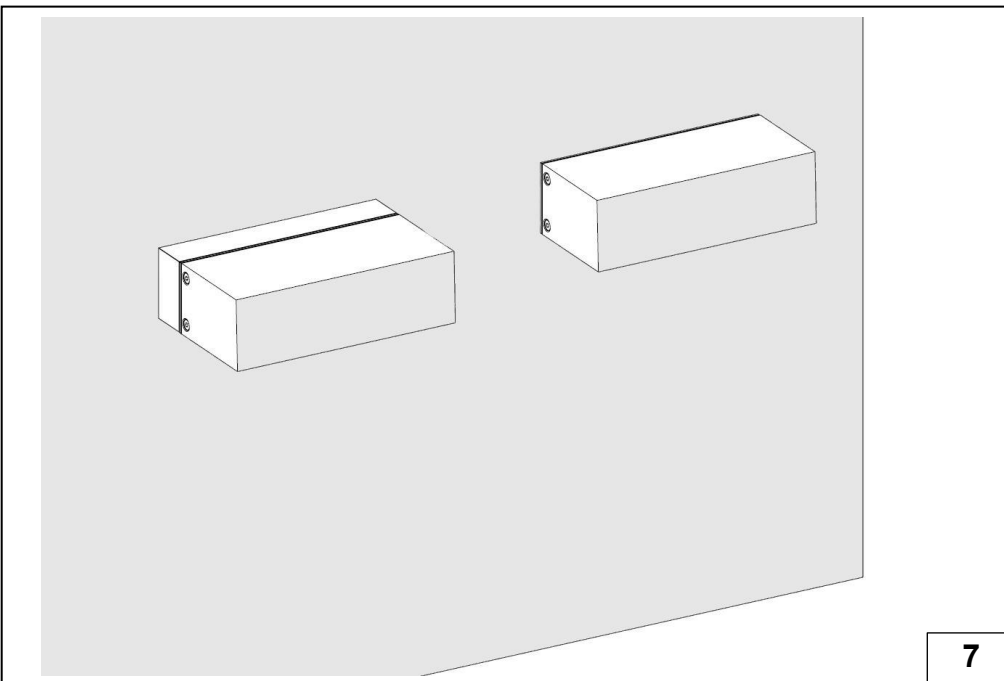
Note1:During the operation any damage to the electrical connection must be avoided.  
Not 2: After the replacement of LED Driver, the countersunk bolts are screwed applying 1,84 lb ft torque (4xM4 Countersunk Bolts ).

10. Removing the cartridge assembly;
  - 10.1.Star cylindrical head bolts holding the cartridge sheet are removed.
  - 10.2.The cartridge group is removed.

Note1:During the operation any damage to the electrical connection must be avoided.  
Not 2: After the LED driver replacement is completed, the cartridge group is placed in place and star cylindrical head bolts are tightened with 0,73 lb ft torque ( 2xM3 Flat Head Screw )

11. To remove the LED driver;
  - 11.1.The star cylindrical head bolts holding the LED driver are removed and the cables connected to the LED driver are removed.
  - 11.2.LED Driver is taken out.

Not 1: During the operation any damage to the electrical connection must be avoided.  
Not 2: The new LED driver is seated and the star cylindrical head bolts are tightened into place with a torque of 0,73 lb ft. ( 2xM3 Star cylindrical head bolts ).  
Not 3: Cables are mounted on the new LED driver.  
Not 4: 6, 7, 8 ve 9 item numbers are applied reversely and the luminaire is closed.



A (mm/Inch)	B (mm/Inch)	C (mm/Inch)	AĞIRLIK WEIGHT (kg/Lb)	VERSİYON VERSION	ARMATÜR KODU LUMINAIRE CODE
180 mm 7 3/32"	55 mm 2 11/64"	113 mm 4 29/64"	1.16 kg 2 9/16 Lb	ADAPTÖRLÜ WITH ADAPTER	LW6048.575
180 mm 7 3/32"	55 mm 2 11/64"	83 mm 3 17/64"	0.84 kg 1 55/64 Lb	ADAPTÖRSÜZ WITHOUT ADAPTER	LW6048.575
180 mm 7 3/32"	55 mm 2 11/64"	113 mm 4 29/64"	1.15 kg 2 17/32 Lb	ADAPTÖRLÜ WITH ADAPTER	LW6048.585
180 mm 7 3/32"	55 mm 2 11/64"	83 mm 3 17/64"	0.85 kg 1 7/8 Lb	ADAPTÖRSÜZ WITHOUT ADAPTER	LW6048.585

## WARNINGS AND REMARKS FOR INSTALLATION AND MAINTENANCE

### Safety Instructions

- The light source contained in this luminaire shall only be replaced by the manufacturer or his service agent or a similar qualified person. Always switch off the power prior to installation, maintenance or repair activities.
- The manufacturer is then discharged from liability when damage is caused by improper use or installation.
- If any luminaire is subsequently modified, the persons responsible for the modification shall be considered as manufacturer.
- To reduce the risk of death, personal injury or property damage from fire, electric shock, falling parts, cuts, abrasions and other hazards, please read all warnings and instructions included with the luminaire, on the luminaire's packaging and affixed to the luminaire itself..

### Installation

- LEDs are high-quality electronic components! Please avoid contacting the light output opening of the LED directly during installation or relamping.

### IMPORTANT

- To ensure secure connection, the luminaire housing must be positioned precisely in relation to the mounting plate.

### Cleaning And Maintenance

- Clean luminaire regularly with solvent-free cleaners from dirt. Please do not do not clean the luminaire with using high-pressure liquids.

