



# ART 7AW/G+



## INSTALLER MANUAL

**INDEX**

1. Safety cautions and warnings.....	3
2. Characteristics .....	3
3. Device description.....	3
3.1. Jumper description.....	4
4. Device installation.....	4
5. Monitor configuration .....	5
6. Web client.....	5
6.1. Settings.....	6
6.2. SIP Servers.....	6
6.3. About.....	7
7. Settings.....	7
7.1. Address.....	8
7.2. Privacy.....	8
7.3. Guard.....	8
7.4. Devices .....	9
7.5. SIP.....	9
7.6. Password .....	9

## 1. SAFETY CAUTIONS AND WARNINGS

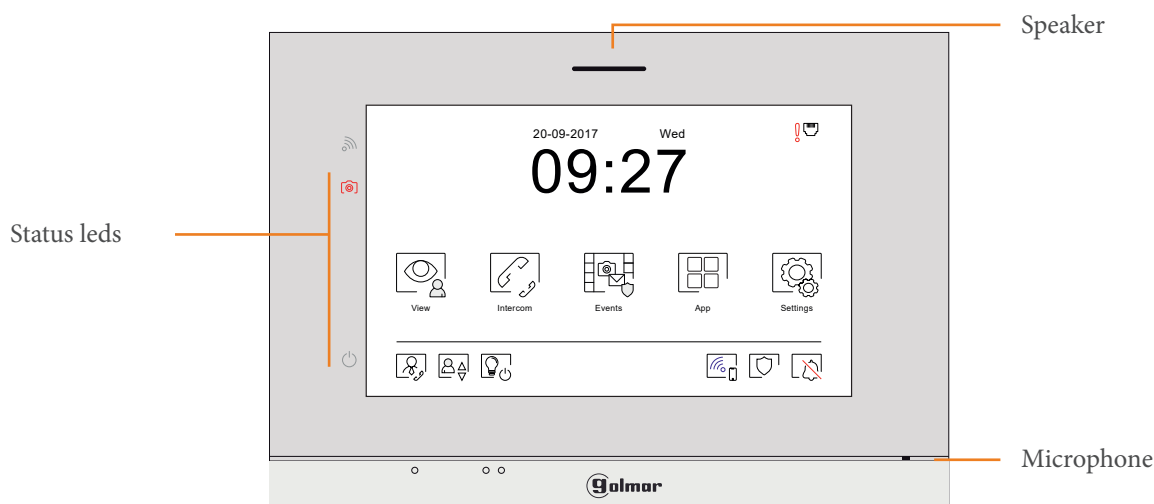
- The installation and handling of this equipment must be carried out by authorised personnel only.
- The current regulations require the feeder to be protected with a circuit breaker.
- The entire installation must travel at least 40 cm from any other installation.
- In the power supply (FA-G+):
  - Do not over-tighten the screws of the terminal strip.
  - Install the power supply in a dry and protected place, without risk of dripping or splashing water.
  - Avoid locations near heat sources, damp or dusty.
  - Do not block the ventilation slots so that air can circulate freely.
  - To avoid damage, the power supply must be firmly anchored. Use a DIN 46277 guide for fixing (8 DIN).
  - To avoid electric shock, do not remove the cover or handle the wires connected to the terminals.

## 2. CHARACTERISTICS

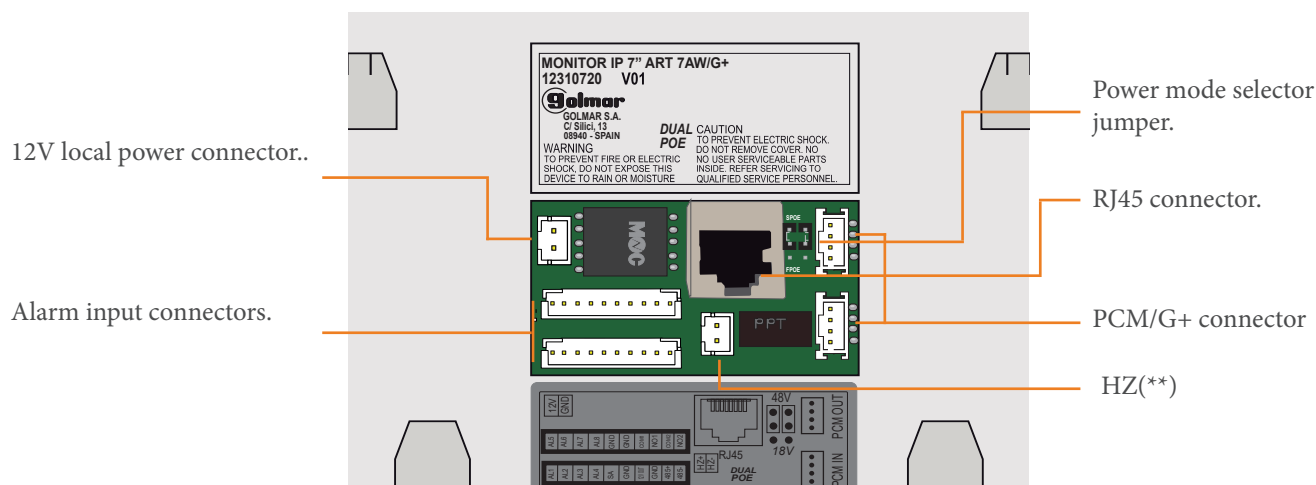
- TCP/IP video intercom system.
- Installation in an existing network structure (requires the addition of D4L-G+/PoE switches) or in its own structure using fibre or UTP cable of category 5 or higher.
- Up to 98 blocks for each installation.
- Up to 19 door panels for each block.
- Up to 799 apartments for each block.
- Up to 19 general guraud units for installation and 9 guraud units for each block.
- Up to 32 IP cameras with ONVIF protocol,

## 3. DEVICE DESCRIPTION

- Front side



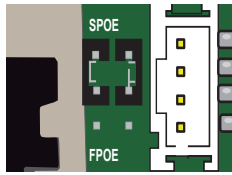
- Back side



(\*) Makes reference to the doorbell of the house.

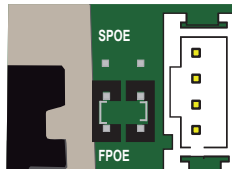
### 3.1. Jumper description

We will be able to choose what supply voltage will be necessary for the correct operation of the device through the jumper located in the back side of the monitor as follows:



48 V standard PoE (default position).

The device is ready to receive 48V from a PoE standard switch.



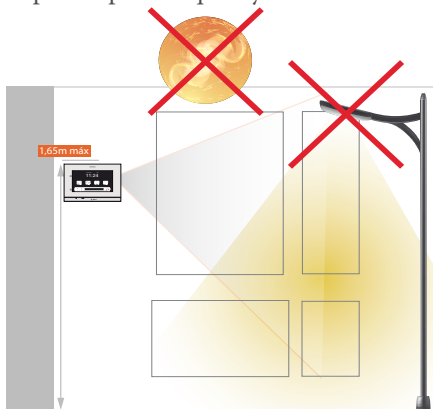
18 V.

The device is ready to receive 18V from a D4L-G+/PoE or from a DCS/G+ ethernet switch.

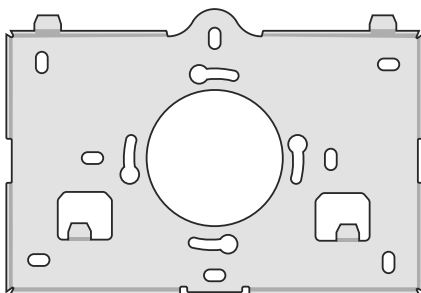
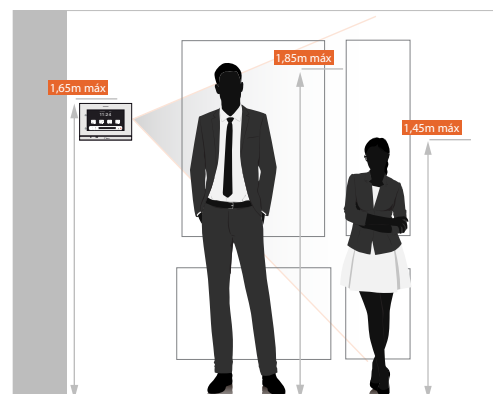
## 4. DEVICE INSTALLATION

Monitor location.

1- Avoid exposing the monitor to backlighting from light sources for optimal picture quality.



2- Place the top of the monitor at a height of 1,65 m for a correct viewing of the screen.



Use the monitor stand so that the monitor is at the above mentioned height.  
Place it in a flat surface which allows a good fit of the stand to the wall.

Necessary elements to complete an installation:

- FA-G+ power supply for each 8 devices (door panels, monitors...).
- Make the distribution of the different devices through 4 distributed outputs D4L-G+/PoE distributors or via standard PoE switches.
- Choose 6502/G+ door panels, or a modular composition for the Nexa panel to be able to register all the units in it and set a video intercom system as such.

In case of daisy-chain distribution of the devices (IN/OUT), use DCP/G+ injectors, accompanied by a FA-DC48/G+ power supply and DCS/G+ ethernet switches in the monitors.

## 5. MONITOR CONFIGURATION

Once the monitor is connected to the network, it will automatically start and it will show an initial configuration screen in which we must set the following parameters related with the physical location of the monitor in the installation:

**Configuración inicial ~ Initial config**

Idioma ~ Language: English

Dígitos llamada ~ Call digits: 5

Edificio ~ Block: 1

Vivienda ~ Apartment: 1

Monitor: 1 / 6

Manual assignment of network parameters.

Save the configuration set.

Annotations:

- Always has to be 5.
- Block in which the apartment is located.
- Apartment number in the block..
- Up to a maximum of 6 apartment unit for each apartment..

If you want to assign a different network parameters as the ones that the system automatically assigns, we must press on the icon located in the bottom of the screen. This will bring us to a screen where we will be requested to enter the desired network parameters.

**Ajustes de red ~ Network settings**

☒ Automatic

Local IP: 10.0.0.107

Subnet Mask: 255.0.0.0

Gateway: 10.0.0.1

Server IP: 10.0.14.9

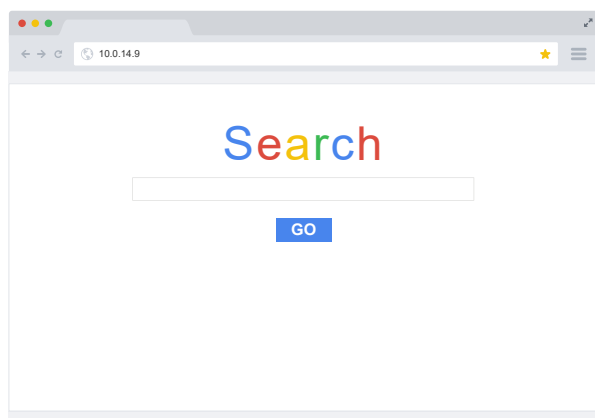
Annotations:

- IP address of the monitor.
- Subnet mask of the monitor.
- System gateway address. IP address of the system router through which go out to internet.
- Server system IP address. It is the management panel IP address.

## 6. WEB CLIENT

We can access the Web Client of the monitor to make changes in the configuration or to configure its network parameters manually, entering the device IP address in our web browser. If the device still being with its default factory settings, we have to enter the 10.0.0254 IP address in our web browser. If the device is already configured, we have to enter the IP address that the system automatically assigned or we manually assigned.

Type the IP in the web browser:

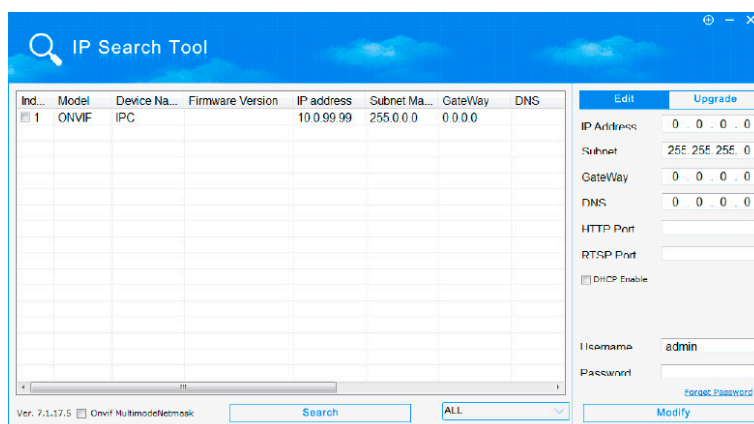


Log in the Web Client:



The password to access is 888999.

If we do not remember the IP address that we assigned the monitor, we can make a search of IP addresses in the network via searching programmes as “IP search Tool”.



Below, it is described the initial screen of the Web Client for the ART 7AW/G+ monitor:

### 6.1. Settings

Monitor language.

Dialling code length.

Block number.

Apartment number.

Unit number of the apartment.

Available languages.

Settings.

SIP settings.

About the device.

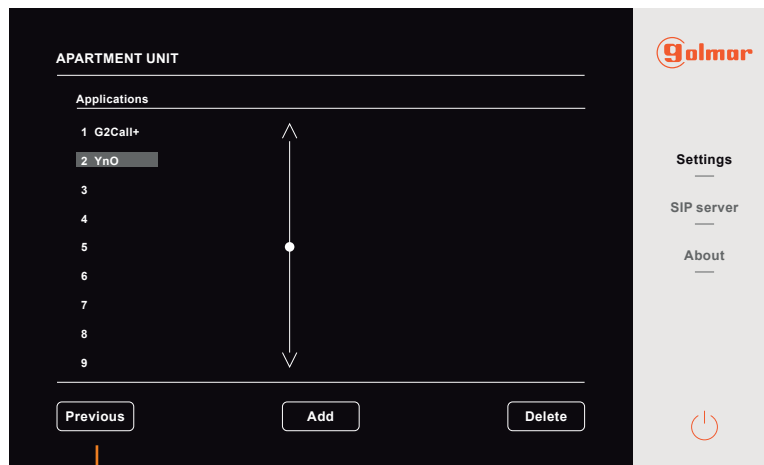
Manual assignment of network parameters.

Go to the next screen.

Go to the previous screen.

Go to the next screen.

We can change the background picture of the monitor for the picture that we consider through the “Load” option that allows us to upload an image from our laptop. We also can re-set the default background pressing over the “Restore” option.

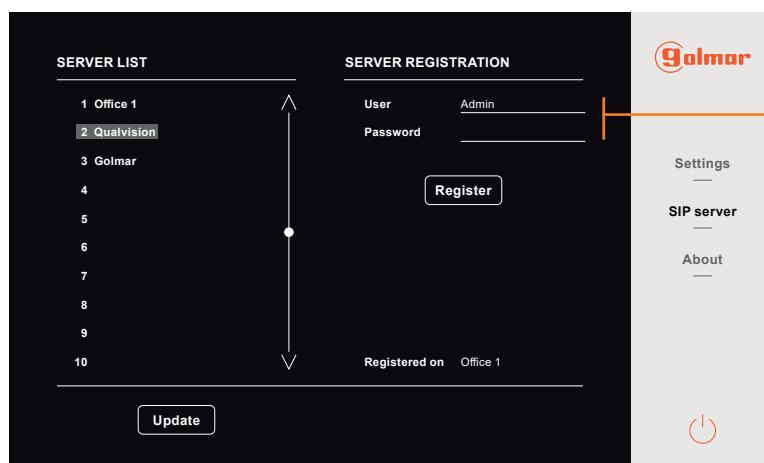


Go to the previous screen..

We can see which applications are installed in the monitor and install new desired applications. For this, we have to previously obtain the apk file of the application to be installed and upload it to the list of applications through the “Add” option. A progress bar will appear indicating that the application is installing and when it ends, the application will appear in the list. Otherwise, if we want to delete an application of the monitor we must select it and then press over the “delete” option. We must press accept in a confirmation screen that will appear and the application will disappear of the list.

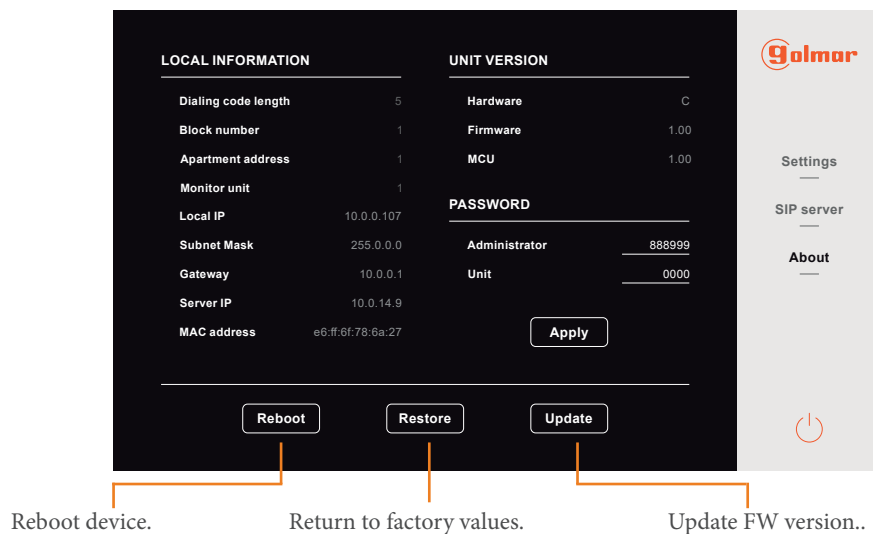
## 6.2. SIP Servers

In the SIP Servers section, we will be able to add the device in the PABX switchboard registered in the master panel to make and receive calls from SIP devices included in the system via extensions assigned to the monitor.



User and password created in the PABX switchboard.

## 6.3. About

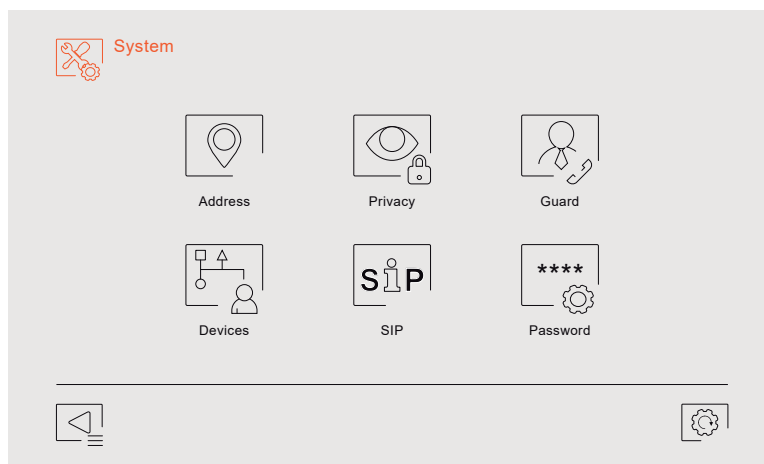



## 7. SETTINGS

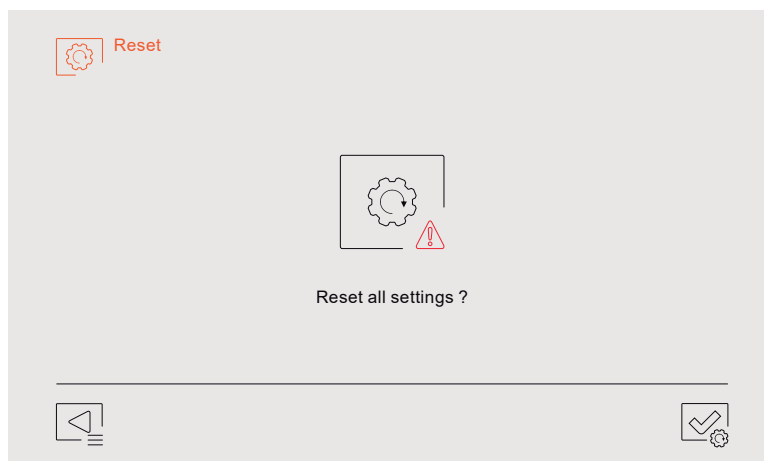
In this section of the manual, we will see in detail the system settings. If you want to see other type of settings to which we can access with the monitor, see the ART 7AW/G+ user manual that you will find in the “Downloads” tab in the product website.

When pressing over the system settings, in the monitor will appear a screen in which you must type the installer password to be able to access the setting system menu. The default installer password is: 2718.

Once you have access the system settings, the following screen will appear:




To re-set the monitor settings to a factory values, we must press over the icon  located in the bottom right on the screen. The following screen will appear and we must confirm the factory reset of the monitor settings.

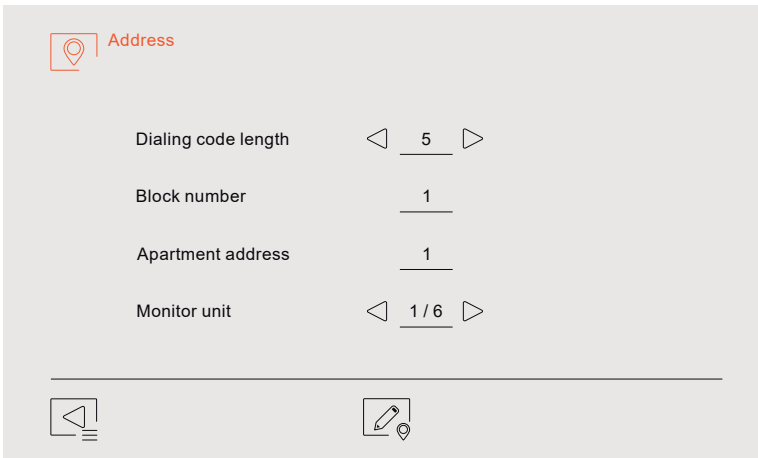




### 7.1. Address

In this section we can modify the system address. If we modify the physical address of the monitor, the network parameters of the monitor will also change. These can be assigned automatically by the system or manually accessing to the screen explained before pressing over the  icon.

We would fill in the fields in the same way as in the beginning of the configuration but updating the data which have changed.





**Address**

Dialing code length

Block number

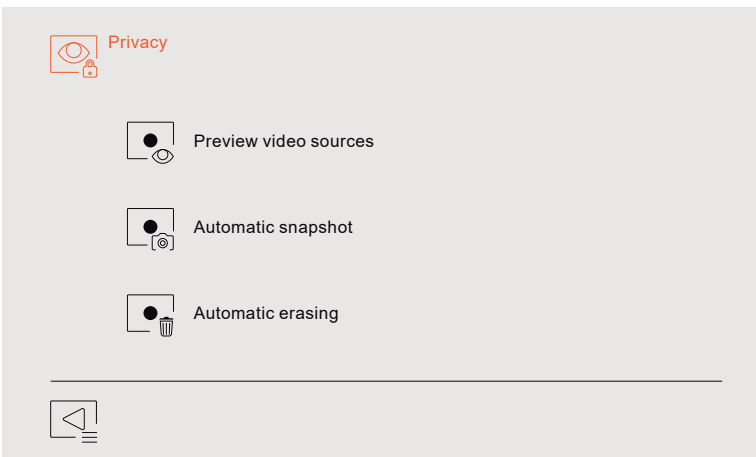
Apartment address

Monitor unit

### 7.2. Privacy

In the privacy section, we will be able to enable or disable the monitor's view of the door panels and the CCTV IP cameras added in the system, the automatic snapshot when there is a call from the door panel and the automatic erasing of them after the set period of 30 days.




**Privacy**

☐ Preview video sources

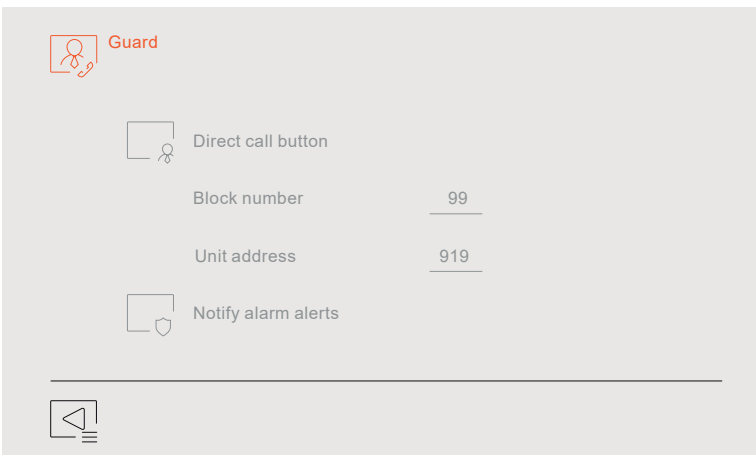
☐ Automatic snapshot

☐ Automatic erasing



### 7.3. Guard

With regard to the guard unit settings, we will be able to set to which address we will call when we press the direct call to the guard button from the main screen of the monitor. We will also be able to enable the general guard's reception of the alarms when they occurs.




**Guard**

☐ Direct call button

Block number

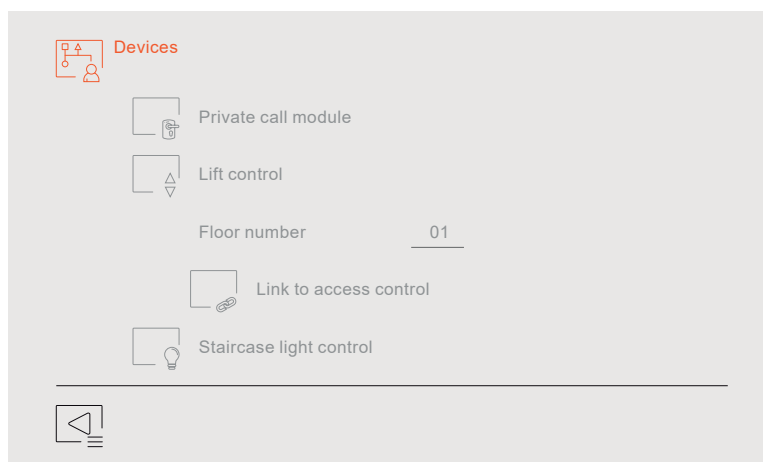
Unit address

☐ Notify alarm alerts



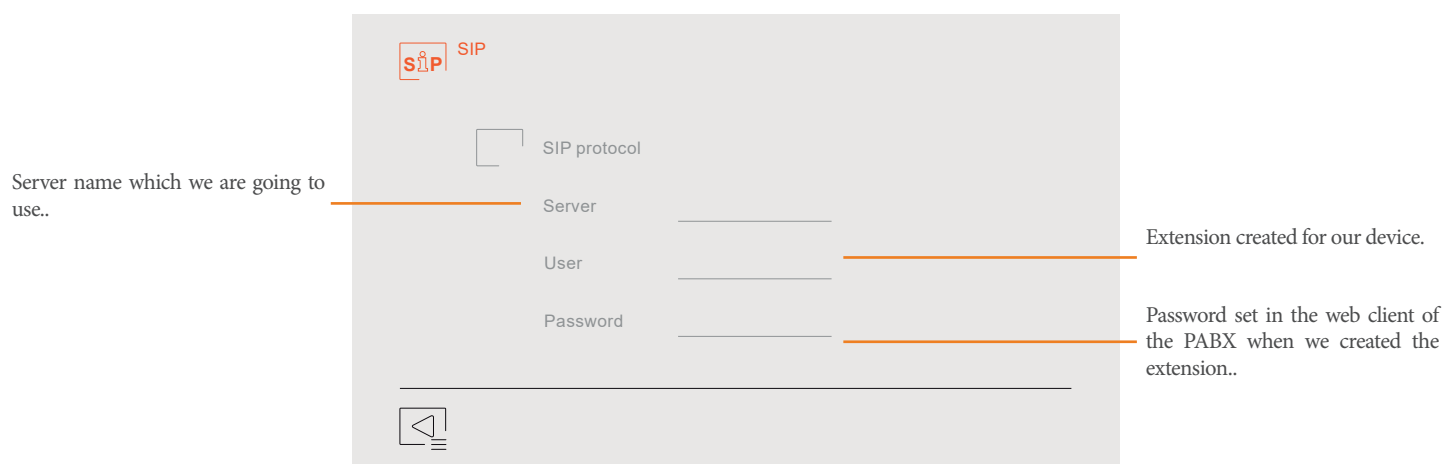
#### 7.4. Devices

In the “Devices” section, we will be able to enable, if we have it, the PCM/G+ private call module. We will also be able to enable the lift control from the main screen of the monitor and link it with the access control so that, when you open the door presenting the keys to the RFID reader of the door panel, the lift is activated in the respective floors of the panel and the apartment.



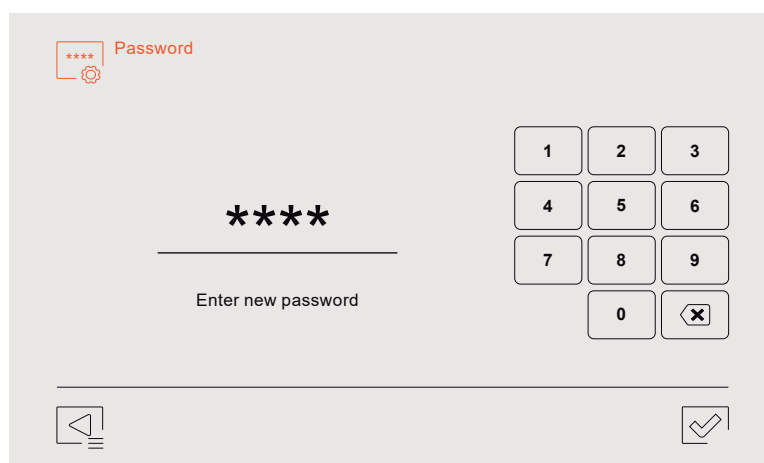
#### 7.5. SIP

In the “SIP” section we will be able to add the monitor in a PABX switchboard in order to receive and make calls through the PABX via a previously created extension for our device in the switchboard. For this, we will must fill in the fields requested by the monitor in the following way:



#### 7.6. Password

To conclude with the system settings menu, we will emphasise in the “Password” section which will allow us to change the password to be entered to access the system settings menu.





C/ Silici 13. Poligon Industrial Famadas  
08940 – Cornellà del Llobregat – Spain  
[golmar@golmar.es](mailto:golmar@golmar.es)  
Telf: +34 934 800 696  
[www.golmar.es](http://www.golmar.es)