



# CODEPROX-WL



## INSTALLATION MANUAL

1.INDEX

---

1.Index .....2

2.Introduction .....3

3.Specifications.....3

4.Product content.....3

5.Installation .....4

    5.1.Method 1.....4

    5.2.Method 2.....4

6.Connection.....4

7.Connection diagram .....5

    7.1.Wireless Wiegand communication .....5

    7.2.Wiegand and wireless relay contact communication .....6

8.Application.....7

9.IP OPENER user registration.....7

    9.1.PIN registration .....7

    9.2.Card registration.....8

10.Others.....8

    10.1.Status displays .....8

    10.2.Pairing reader with receiver .....9

    10.3.Unpair receiver reader.....9

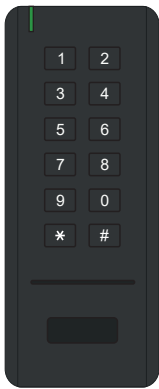
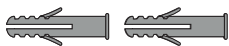




## 2.INTRODUCTION

CODEPROX-WL is a slave reader that transmits Wiegand information wirelessly to the controller.

## 3.SPECIFICATIONS

READER/EMITTER	Material	Black ABS plastic
	Protection degree	IP-65
	Power supply	3 AAA batteries (not included)
	Current	Standby: $\leq 5\mu\text{A}$ / Active: $\leq 45\text{mA}$
	Communication frequency	433MHz
	Communication distance	20m (with direct vision)
	Reading frequency	Mifare 13.56MHz
	Reading range	3cm
	Transmission format	Wiegand 26
	Battery life	1 year (based on an average use of 30 times daily)
	Dimension (H x W x D)	55(W) x 134(H) x 20(D)mm
	Working humidity range	-20 ~60° C
	Rango de humedad de trabajo	0-86% (non-condensing)
RECEIVER	Input voltage	12Vdc
	Current	$\leq 15\text{mA}$
	Communication frequency	433MHz
	Transmission format	Wiegand 26
	Dimension (H x W x D)	25(W) x 50(H) mm
	Working temperature range	-20 ~60° C
	Working humidity range	0-86% (non-condensing)

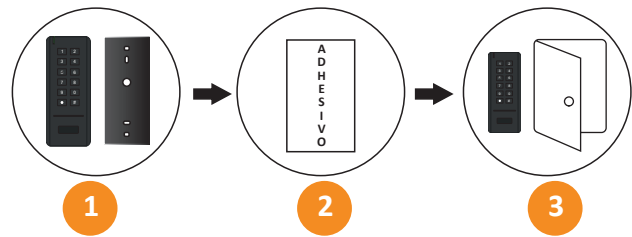
## 4.PRODUCT CONTENT

 <p>CODEPROX-WL reader</p>		Fixing blocks.
		Screws.
		Fixing adhesive.
		Allen key for fastening screws.
		Receiver.

5.INSTALLATION

5.1. METHOD 1

By using the adhesive (for metal or glass doors).



- 1 Remove the screw at the bottom and remove the reader from the base.
- 2 Stick the adhesive on the back of the reader base, then clean the fixing area and attach the base.
- 3 Insert AAA batteries into the reader and secure the reader to the base with the screw on the bottom.

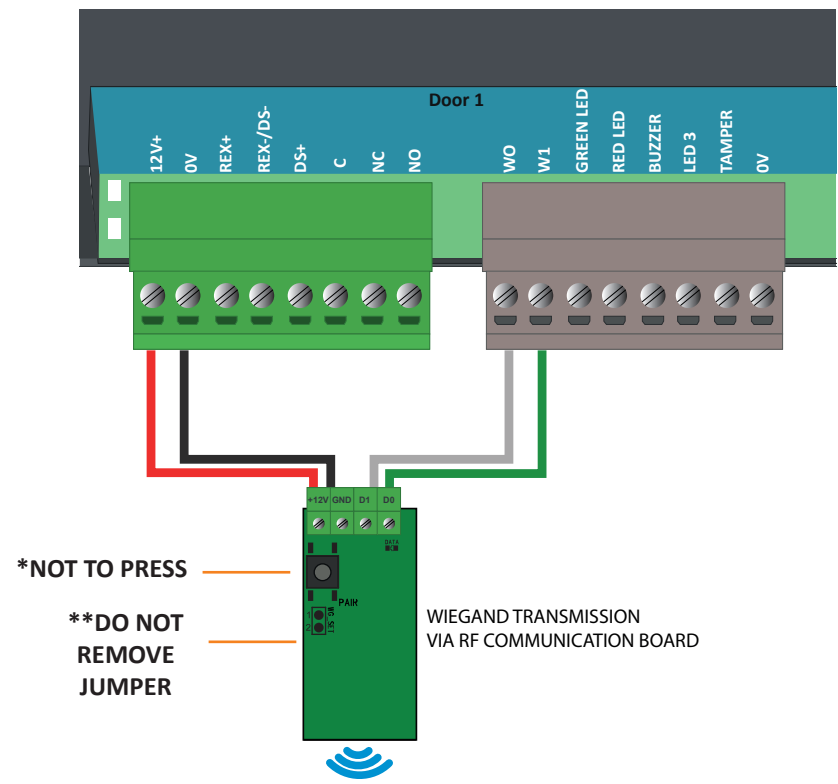
5.2. METHOD 2

By using the screws.



- 1 Remove the screw at the bottom and remove the reader from the base.
- 2 Drill a pair of holes in the wall (A,C) for the fixing blocks.
- 3 Place the fixing blocks in the holes (A,C).
- 4 Fasten the base to the wall with the screws provided.
- 5 Fit the reader into the base and secure both parts with the screw at the bottom.

6.CONNECTION (RECEIVER WITH CONTROLLER)



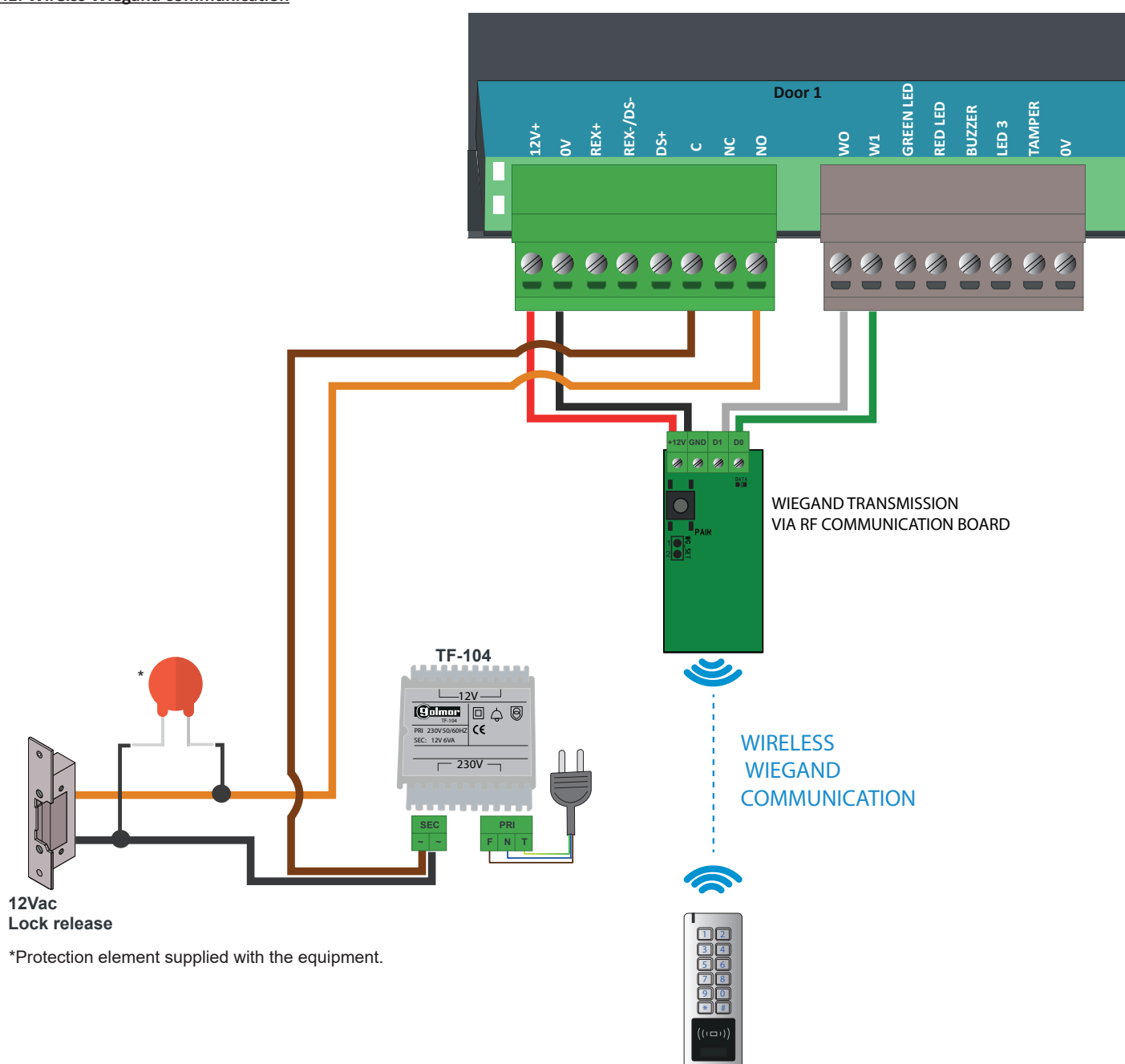
CONNECTOR	FUNCTION
+12Vdc	Input 12Vdc current
GND	GND
D1	Wiegand Data 1 output
D0	Wiegand Data 0 output

IMPORTANT

- \*Do not press the TAC. The receiver is by default paired with the reader.
- \*\*Do not remove the jumper. The jumper sets the Wiegand output to 26bits.

## 7.CONNECTION DIAGRAM

### 7.1. Wirelss Wiegand communication

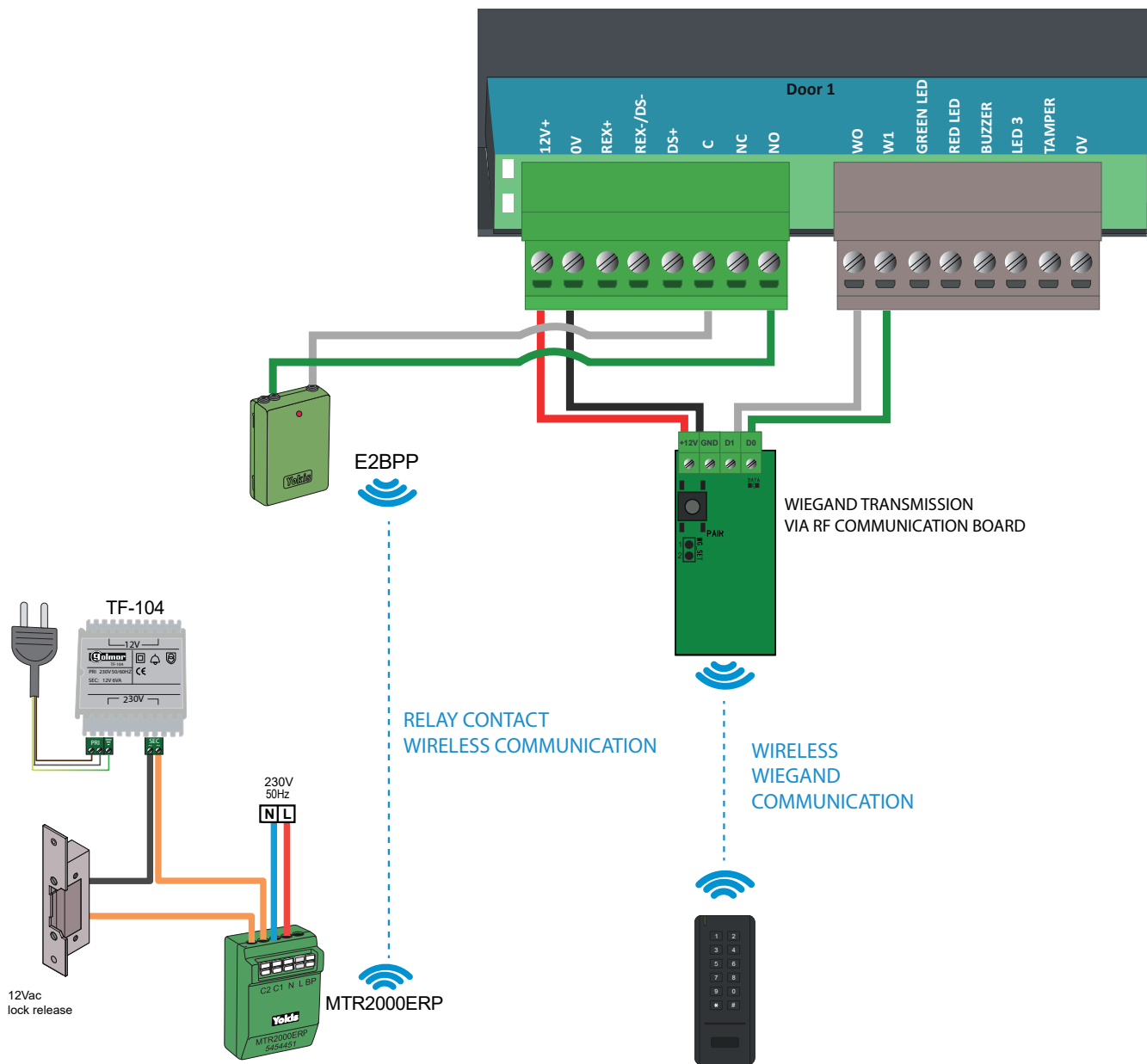


#### IMPORTANT:


1. Do not forget to connect the supplied diode (1N4004) in parallel to the opener to protect the equipment.
2. The maximum distance between the reader (transmitter) and receiver is 20m (with direct vision).

7.2. Wiegand and wireless relay contact communication

The inclusion of Yokis remote switches makes it possible to trace a wireless communication for the relay contact. Achieving in this way a total wireless communication between the controller and the rest of the elements (reader and lock release):



**IMPORTANT:**  
The maximum distance between the reader (transmitter) and the receiver is 20m (with direct vision) for both Wiegand and relay contact communication.  
The Yokis transmitter (E2BPP) should be configured as follows:

- 

**STEP 1**

Pair E2BP with module(s).  
Press 5 times on the transmitter then a short press on the connect button of the receivers.

**STEP 2**

Enter "Programming" by pressing 10 times on the transmitter.

**STEP 3**

Set the transmitter to "Ring" mode by pressing 17 times (the receiver follows the operation of the transmitter's button).

## 8.APPLICATION



### ACCESS BY PIN

Enter the access code and then press #.

### ACCESS BY CARD

Enter # and then approach card.

#### NOTE:

The reader is continuously in standby mode to extend battery life. For this reason, it is necessary to press # before to access by card.

## 9.IP-OPENER USER REGISTRATION

### 9.1.PIN registration

Generate a user with credential type “Other (decimal)”, following the next format when completing the “Code (numeric)” field:

4-digit PIN (X equals PIN): 0000XXXX  
 5-digit PIN (X equals PIN): 000XXXXX  
 6-digit PIN (X equals PIN): 00XXXXXX

At this point the PIN code will be registered in iP Opener:

Date / Hour	Event	Element	Information	Identifier
2024-08-08 11:03:31	Access by single credential	6 Doors WIEG - Puerta 0001 Lector 0001 Access profiles all users	PIN user	00004543

9.2. Card registration

Generate a user with “Proximity token 1356” type credential for ISOPROX card or KEYPROX SE key fobs:

Card user

SaveCancelMoreActionsNewDelete

Last nameCard user

First nameFirst name

TypeResident

Door/zone accessAccess profiles all users

Additional profiles

Extra options

Additional information

Visits

Credentials

TypeCodePermanentStatusActions


Proximity token 1356

19A0FBCA

✓

✓

+ Add a credential

Click on the generated user and then on the “Read/Code” icon  of the ID card to be encoded. At this point, the card or key fob to be encoded must be swiped through the programmer:

Credential

Proximity token 1356

serial number

19A0FBCA

Code

19A0FBCA

Black

Next credential

Next user

Save

Cancel

10.OTHERS

10.1. Status displays

	OPERATING STATUS	RED LED	GREEN LED	BUZZER
READER	Standby	-	-	-
	Valid card	-	ON 0.5 seconds	Short beep
	Valid PIN	-	ON 0.5 seconds	Short beep
	PIN/card reading with low battery	Flashing 3 times	-	3 beeps
RECEIVER	Standby	ON	-	-
	When a valid card/PIN is read into the reader	ON	ON 0.5 seconds	-
	Pairing mode	-	ON	-

IMPORTANT

In case the reader beeps 3 times and flashes 3 times when reading the card, it indicates a low battery. In this case, replace the batteries.

8

www.golmar.es  
www.golmar-seguridad.es



## 10.2. Pairing reader with receiver

### IMPORTANT

The reader and receiver are already paired from the factory. If there are no issues, there is no need to perform this process.

#### STEP 1, entering pairing mode

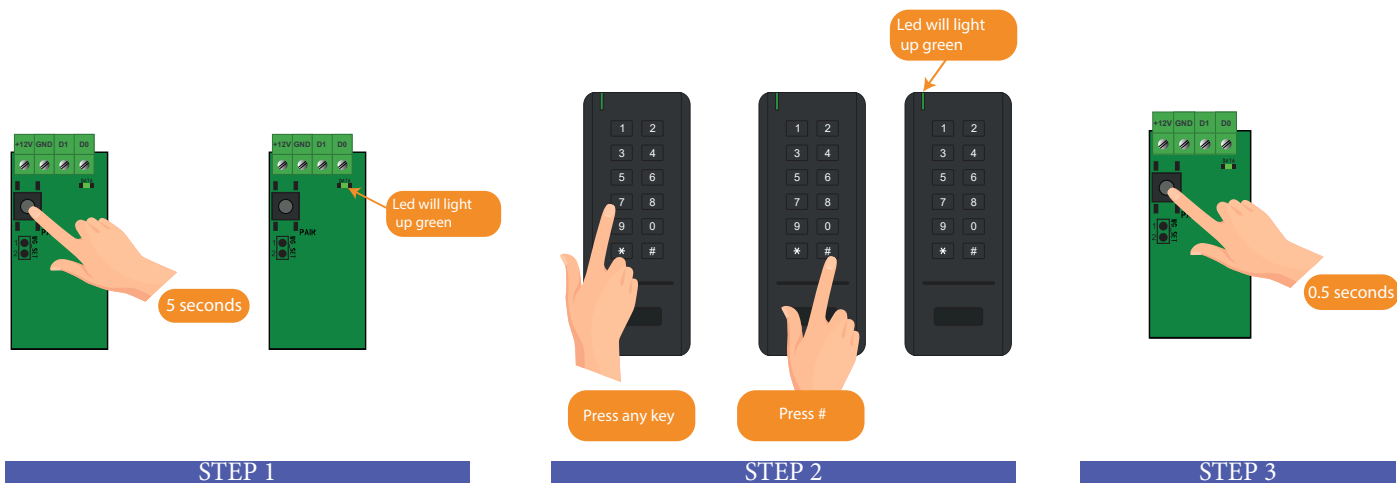
Press the 'Pair' button on the receiver for 5 seconds, the green LED will light up, which means it is in pairing mode.

#### STEP 2, pairing

Press any number and then #, the green LED on the receiver will light up for 0.5 seconds, indicating successful pairing.

#### STEP 3, exit pairing mode

Press the 'Pair' button on the receiver for 0.5 seconds to exit pairing mode.

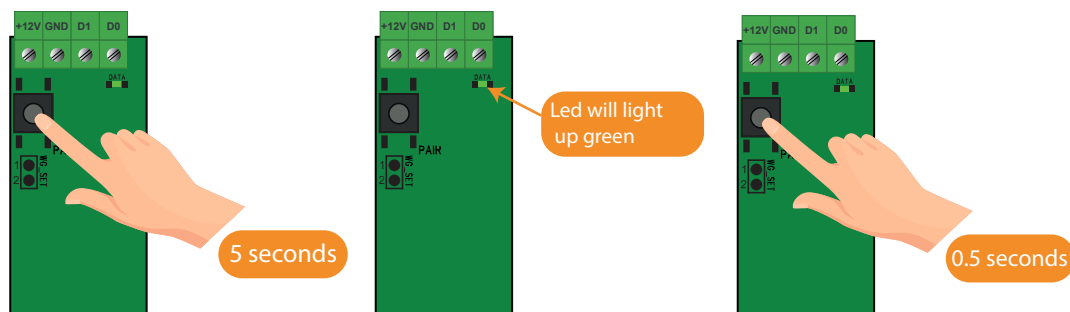


## 10.3. Unpair receiver reader

### IMPORTANT

This process will end the reader's communication with the receiver. Before proceeding make sure that you want to continue with the process.

Press the "Pair" button on the receiver for 5 seconds, release it when the green LED lights up and press the "Pair" button again for 0.5 seconds. At this point the reader will be unpaired.





C/ Silici 13. Poligon Industrial Famadas  
08940 – Cornellà del Llobregat – Spain  
[golmar@golmar.es](mailto:golmar@golmar.es)  
Tel: 93 480 06 96  
[www.golmar.es](http://www.golmar.es)  
[www.golmar-seguridad.es](http://www.golmar-seguridad.es)



Golmar deserves the right for any modification without prior notice.