



CE-ART 7/G+

12379703



USER MANUAL



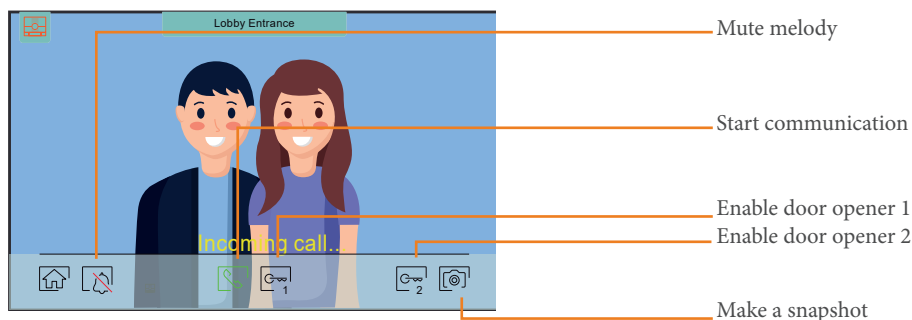
INDEX

1. Basic use	3
1.1. Call reception.....	3
1.2. In communication.....	3
1.3. Make a call.....	3
2. Home screen	4
2.1 Status leds	4
2.2 Quick access icons.....	4
3. Functions	4
3.1. View images from the door panel	4
3.2. Intercom.....	4
3.3. Events	4
3.4. Send messages	6
4. Settings.....	7
4.1. Personal.....	7
4.2. Alarms.....	8
4.3. System	9

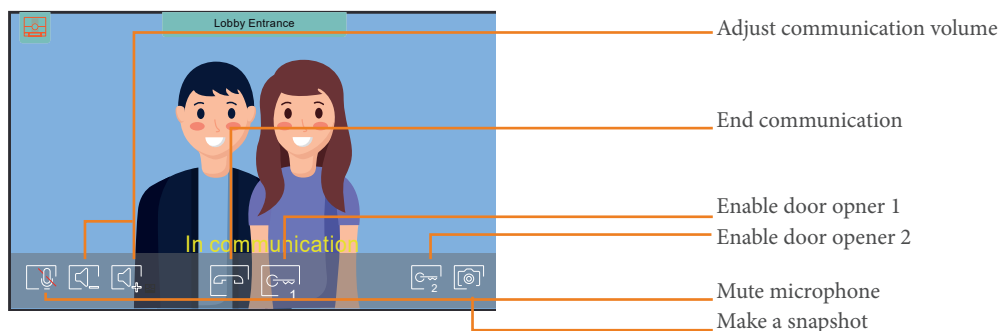
1. BASIC USE

1.1. Call reception:

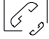
When receiving a call, monitor starts ringing displaying on the screen who wants to communicate with the apartment. Automatically the monitor will make a snapshot to be able to check who was the caller if the call is not answered.

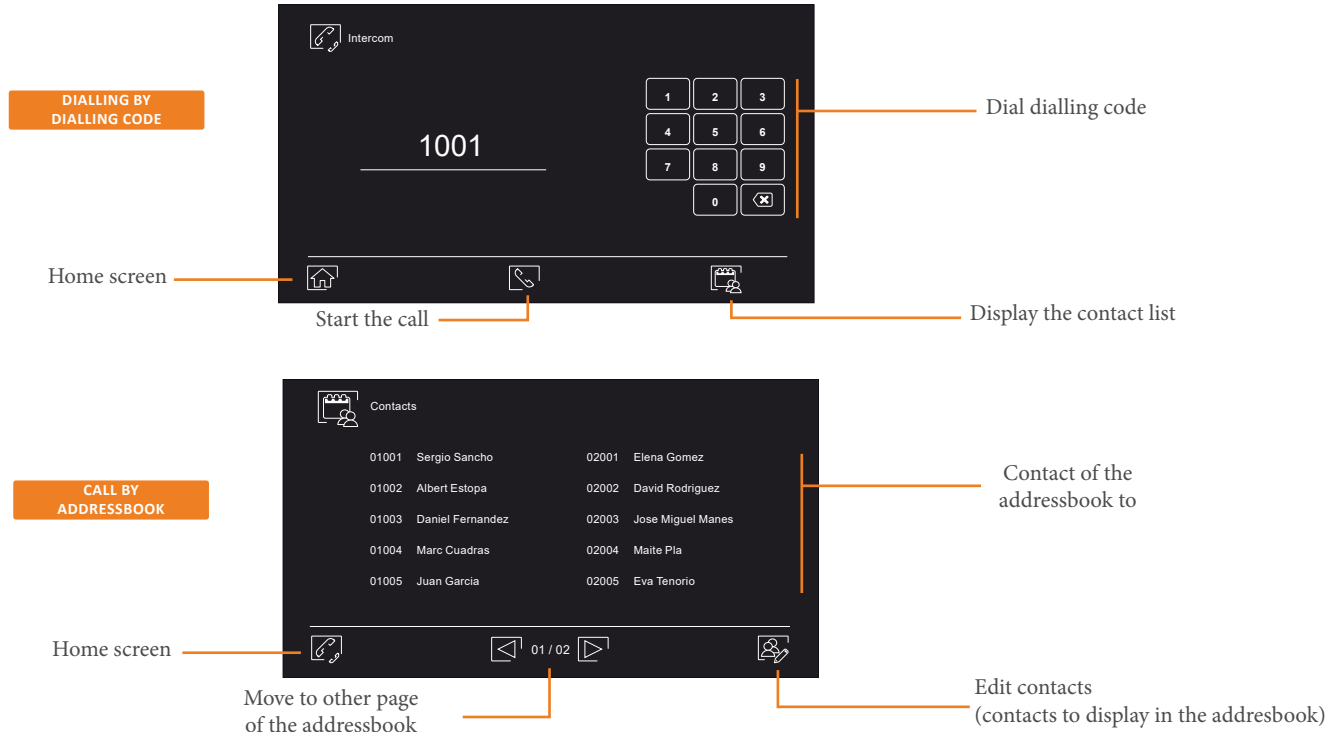


1.2. In communication:



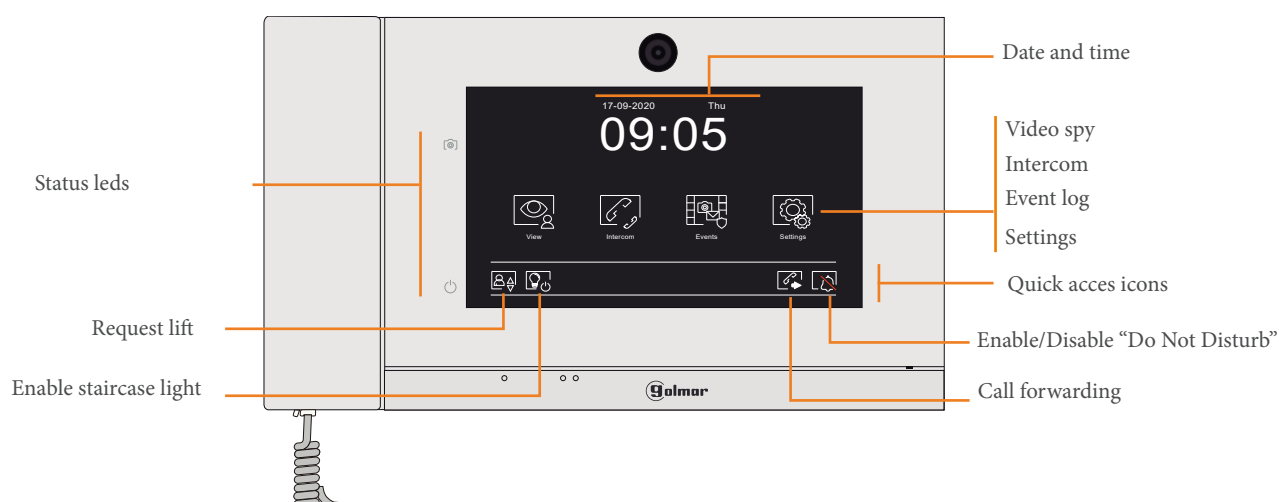
1.3. Make a call:

To start a call with other device of the installation, select  on the home screen .
Make the call dialling the dialling code or through the addressbook:

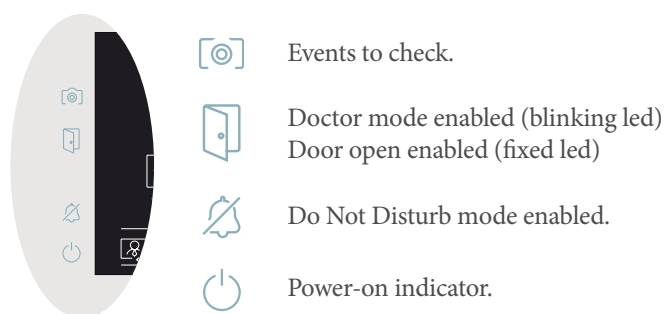


(*) It is possible to make a call quickly to a predefined guard unit, to do this, simply press  from the home screen.

2. HOME SCREEN



2.1. Status leds:



2.2. Quick access icons:

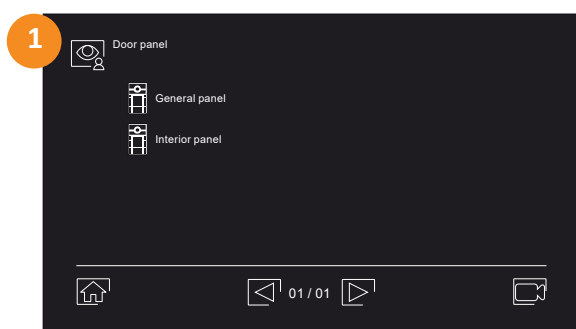
Icons at the bottom of the screen are quick accesses. In order to be able to make use of them, the corresponding function must be enabled and in some cases have an additional element.

3. FUNCTIONS

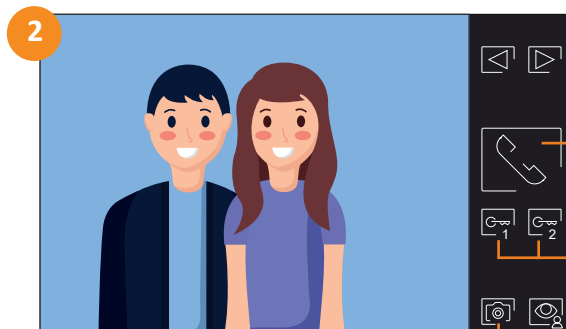


3.1. View images from the door panel.

This function allows to display the image of the panels and ONVIF cameras of the system.



Select the panel of which we want to display the image.
If we want to display the image from a camera, press  to see the camera list.



Options when displaying a panel image.



3.2. Intercom.

See the "make a call" section described above in basic use.



3.3. Events.

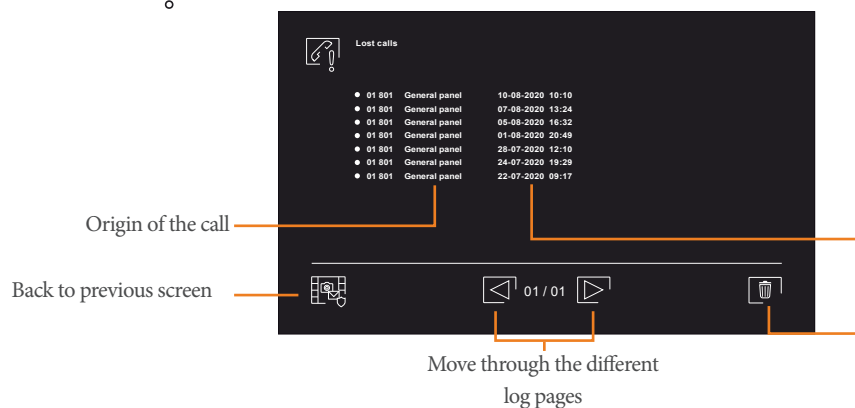
The events section provides the following options:



These are defined in detail below:



Missed calls: displays the log of unanswered incoming calls:



(*) Logs can be deleted individually or jointly.

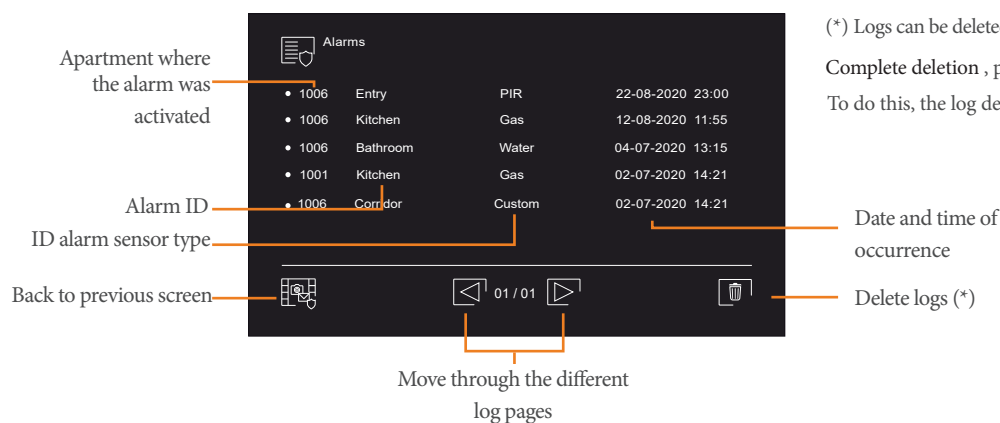
Individual deletion, press , select logs to be deleted 01 801 Placa general 10-08-2020 10:10 confirm deletion pressing again .

Complete deletion, press , press (close to the paperbin) for a complete selection and confirm pressing .

Date and time of occurrence



Alarms: displays the alarm logs produced in the system:



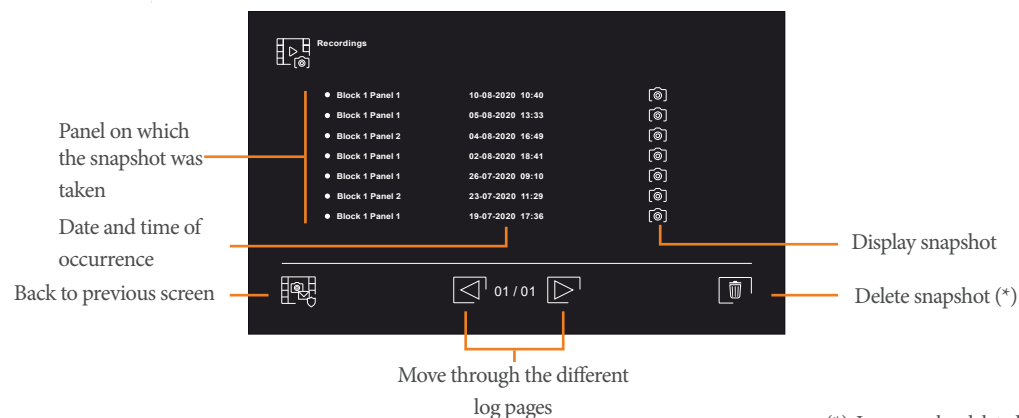
(*) Logs can be deleted individually or jointly.

Complete deletion, press and confirm pressing again .

To do this, the log deletion function must be enabled.



Recordings: displays the snapshot log



(*) Logs can be deleted individually (in menu ,or from snapshot or recording) and jointly.

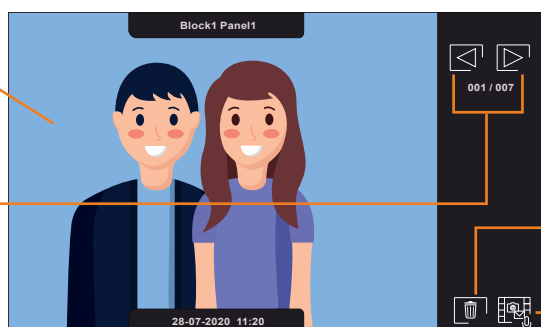
Individual deletion from menu, press , select the snapshot to be deleted 01 801 Placa general 10-08-2020 10:10 and confirm .

Complete deletion, press , press (close to the paperbin) for a complete selection and confirm pressing .

Individual deletion from snapshot or recording, press and confirm .

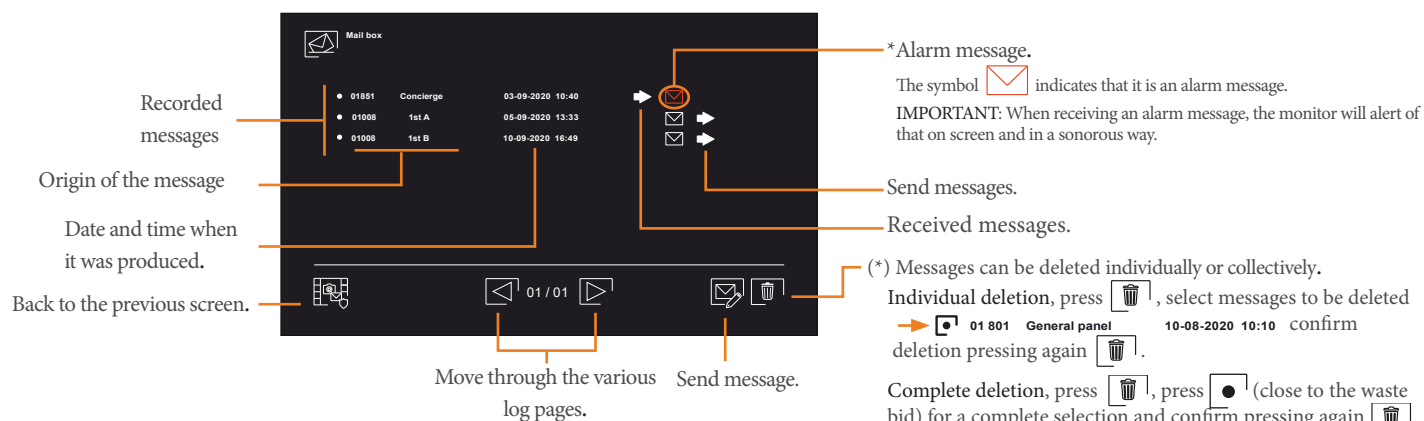
Snapshot display

Display next or previous snapshot



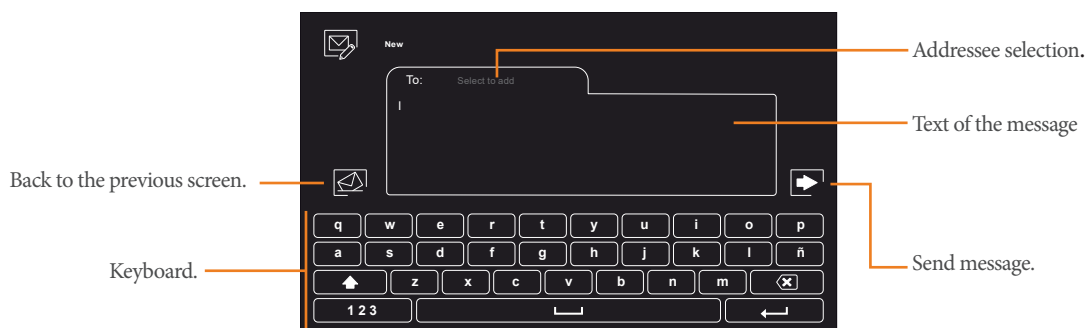


Messages, displays received messages and allows the sending.

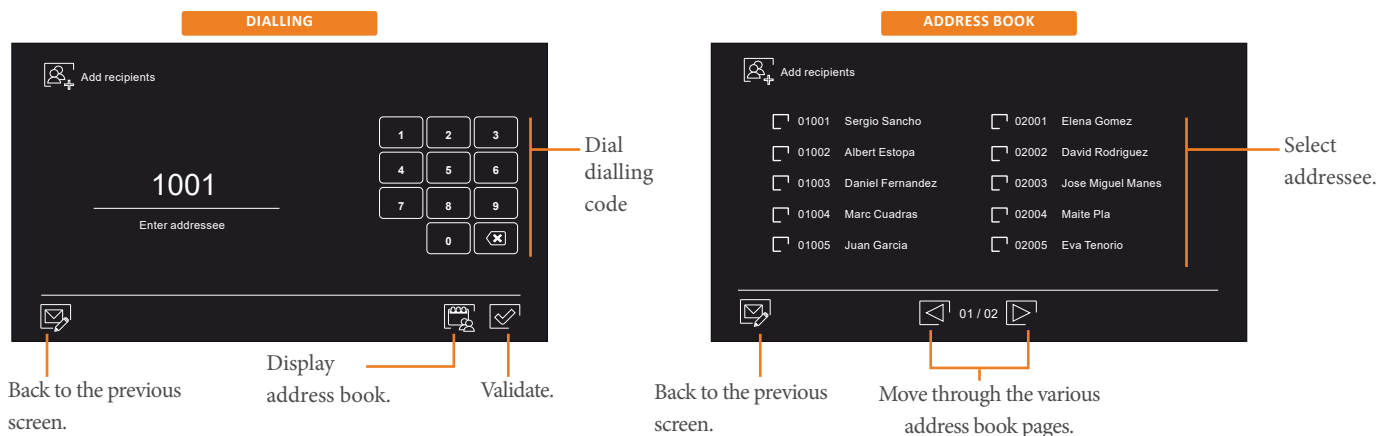


Send message:

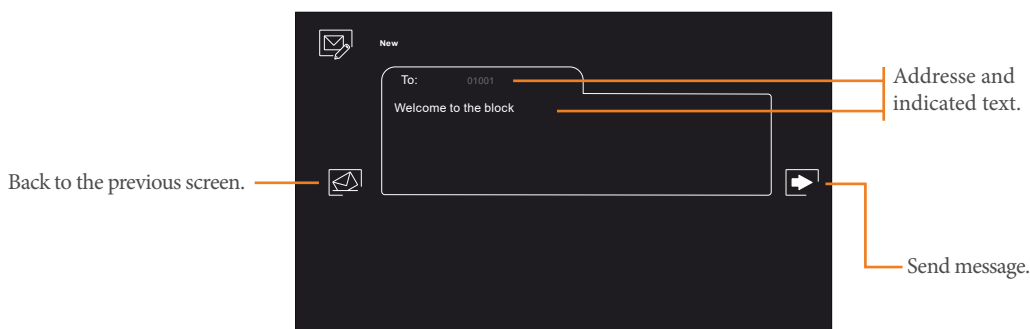
When pressing send message a keyboard is displayed for writing:



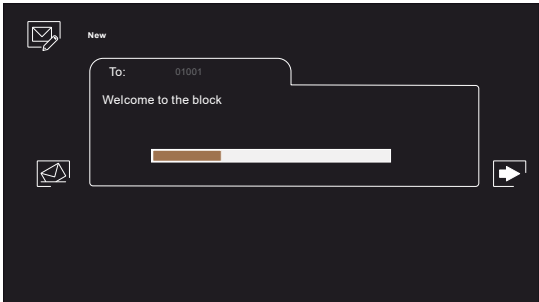
Once the message has been written, the addressee selection will be possible in two ways, by dialling or via the address book.



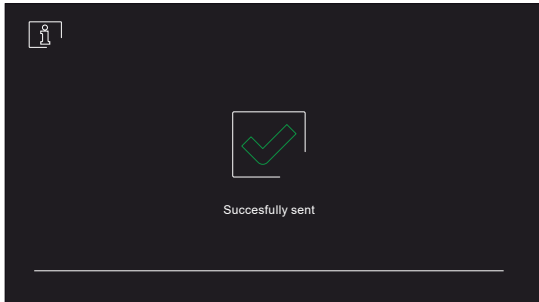
In this moment the message will be ready to send, only will left to press :



A progress bar will start and after brief moments the confirmation of send will be obtained.

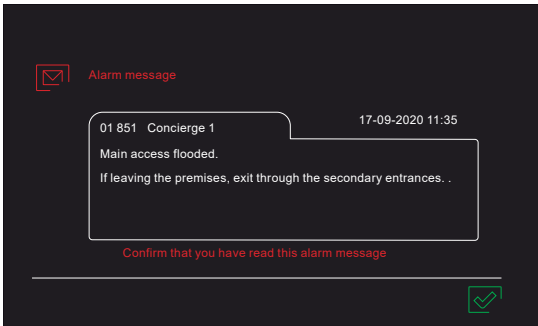


Progress bar



Confirmation

In case an alarm type message has been sent, the addressees will receive the following alert:



This will remain in the screen until confirm reading the message pressing the icon .

4. SETTINGS



Settings.
The settings section provides the following options:



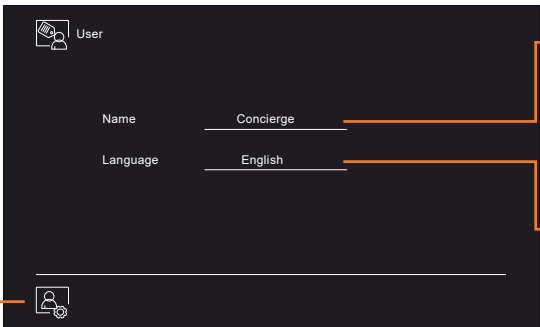
These are defined in detail below:



4.1. Personal: melody selection, volume, do not disturb...



User.

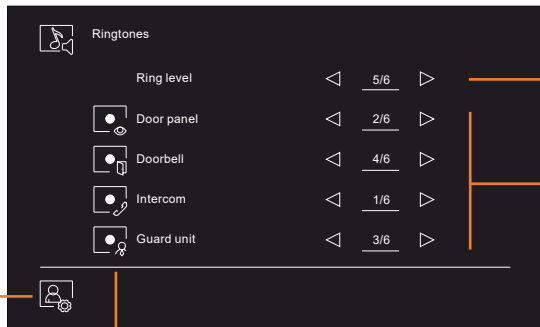


Identification name of the guard unit. This is the name that appear in the contact books of the monitors as in the directory of the panels.
(the modification of the name is not instantaneous, it updates at midnight).

Language selection.



Ringtones.



Adjust ringtone volume between 1-6.

Select ringtone between 1-6.
(selecting different ringtones allows to differentiate the origin of the call)

Back to previous screen.

Enable or disable the tone.



Do Not Disturb.

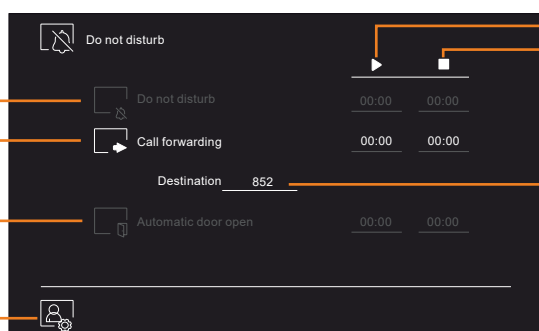
ENABLE/DISABLE

Do Not Disturb mode

Call forwarding

(*)Doctor mode

Back to previous screen



Start time

End time

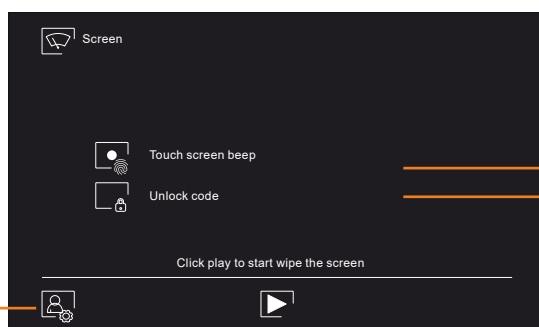
Interval in which it will be active

Guard unit or monitor for call forwarding

(*)Request a password to prevent it from being activated unintentionally. Installer password.



Screen.



Back to previous screen

Enable/disable key press confirmation sound.

Enabled, it will request a code to unlock the screen and be able to use the monitor.

The default code is 1315. It is possible to change it entering 1315 and then a new code to replace it.

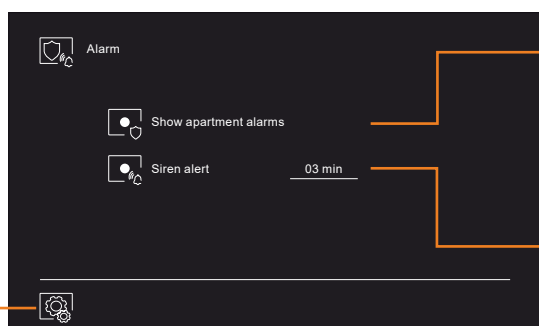
IMPORTANT: In case of change the code, keep the new one in mind.

Lock the screen during 30 seconds so it can be wiped clean.



4.2. Alarms.

Settings for receiving system alarms:



Back to previous screen

Enabled, allows to receive the alarms occurring in the apartments of the system.
NOTE: This is only possible at the guard units configured as general, whose block is "99".

Siren on or off and time at which it is activated.

When an alarm occurs in any of the apartments, it will be displayed as follows in the guard unit:



Apartment where the alarm occurs.

Zone and sensor where the alarm has been activated.

Once the reception of the alarm has been confirmed, the alarm will be registered in the alarm log in the "events" section (see above).

IMPORTANT: Only is possible to receive the apartment alarms if the system has a general guard unit.



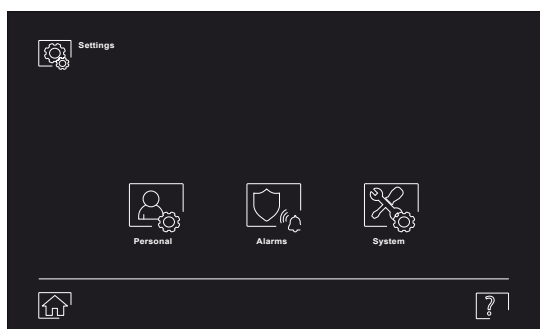
4.3. Sytem: installer settings.


The system settings are not detailed in this manual as they are installer settings.

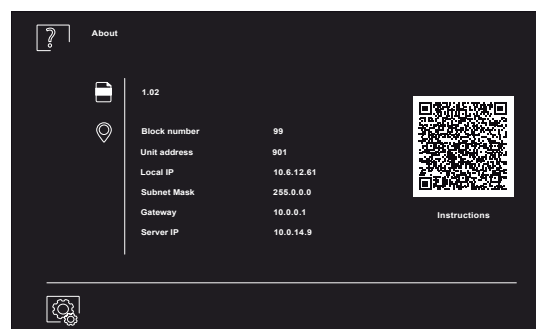


About.

In this screen there is the information of the guard unit configuration and the FW version. It also has a QR link to access the product website and be able to download the manuals.



In the main screen of the settings menu, press the icon at the bottom right .



QR link to download the manual.



C/ Silici 13. Poligon Industrial Famadas
08940 – Cornellà del Llobregat – Spain
golmar@golmar.es
Telf: +34 934 800 696
www.golmar.es



Golmar reserves the right to any modification without prior notice.