

INSTRUCTIONS FOR INSTALLATION OF SINGLE AND DOUBLE CYLINDER DEADLOCKS

FOR USE ON DOORS 1-3/8" TO 1-3/4" (35mm-45mm)

1. MARK DOOR

A. Fold and apply template to high edge of door bevel and mark center of door edge as indicated on template at the desired height from the floor.



B. Mark center hole on door face through guide on template for either 2-3/8" (60mm) or 2-3/4" (70mm) backset.

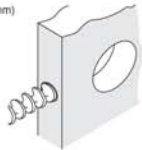


2. DRILL HOLES

A. Drill thru door face as marked for lockset. It is recommended that holes be drilled from both sides to prevent splitting. Hole size is 2" (50.8mm) for standard installations.

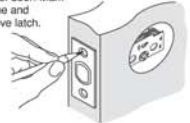


B. Drill 1" (25mm) hole in center of door edge thru to 2" (50.8mm) hole for latch.

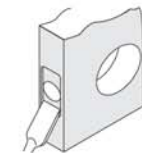


3. INSTALL LATCH

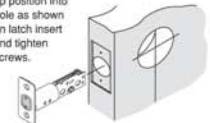
A. Insert latch in hole keeping it parallel to face of door. Mark outline and remove latch.



B. Chisel 1/8" deep or until latch face is flush with door edge.



C. Install deadbolt latch in up position into hole as shown on latch insert and tighten screws.



D. For round face deadbolt press flush to door edge. Bolt must be vertically aligned with door edge as indicated by arrow.

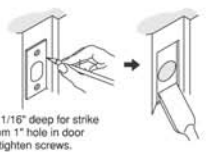


4. INSTALL STRIKE

A. Bore 1" hole 1" minimum deep for deadbolt.



B. Mortise 1/16" deep for strike locating from 1" hole in door insert and tighten screws.



5. INSTALL EXTERIOR MECHANISM



A. Press cylinder side flush against door making certain the torque blade is properly positioned in latch crank. B. Tapped holes in mounting plate of exterior cylinder should be lined up with latch holes. Key hole should be in down position.

TORQUE BLADE SHOULD BE HORIZONTALLY INSERTED INTO LATCH CRANK



6. INSTALL INTERIOR MECHANISM



A. Slide thumb bar and interior rosette onto torque blade.



B. Insert machine screws through holes engaging holes in cylinder and tighten.

INSTRUCTIONS FOR INSTALLING DOUBLE CYLINDER DEADLOCKS

Exterior half is fully assembled with exterior torque blade



EXTERIOR TORQUE BLADE

NOTE: This assembly is placed through latch first.



A. Install interior cylinder

INTERIOR TORQUE BLADE

NOTE: The interior torque blade is inserted into the exterior blade.

B. Press interior assembly flush against door making certain the torque blade is properly positioned in latch hole. Key hole should be in down position.



C. Insert (2) two screws through countersunk holes engaging holes in exterior cylinder and tighten.



FOR OPTIONAL ADJUSTABLE LATCH - Backset is set at the factory at 2-3/8" (60mm). To adjust latch to 2-3/4" (70mm) position, hold rear of latch and rotate latch case 1/2 turn pulling front of latch forwarder until pin snaps into the 2-3/4" (70mm) position. To return the latch to the 2-3/8" (60mm) position repeat above, but push back with thumb on the latch bolt and push latch bolt and latch case in simultaneously.



- 1 FOLD HERE
- 2 READ INSTRUCTIONS 1 1/2" (45mm) THICK DOOR
- 3 MARK PROPER DOOR THICKNESS
- 4 DRILL 1" (25mm) HOLE IN EDGE OF DOOR (2" IN DEPTH)

FOR INSTALLING DEADLOCKS

2 3/8" BACKSET

NOTE: TEMPLATE MUST BE PLACED ON HIGH EDGE OF DOOR BEVEL

