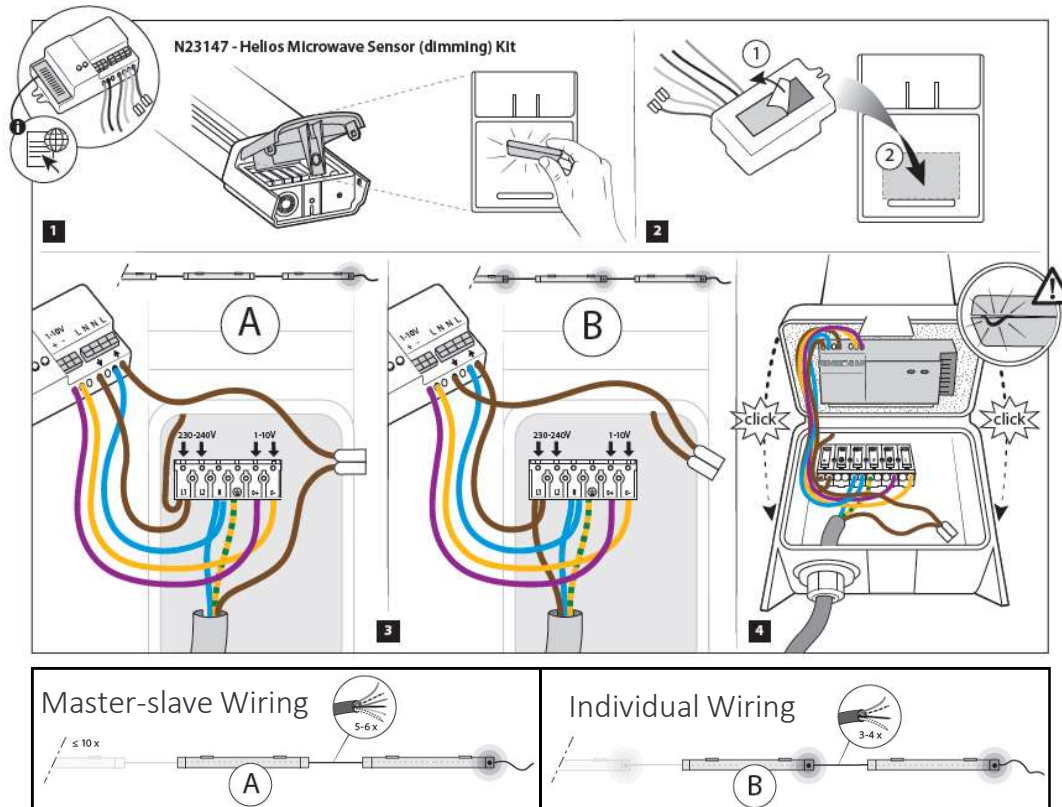


N23147 Dimming Microwave Sensor Kit Setup



NB: These sensor kits are suitable for use within Helios when surface mounted directly to a solid, non-vibrating surface. Nuisance triggering may occur if any free moving objects are present within the detection field of the sensor.

Setup

	1	2	
I	●	●	100%
II	●	○	75%
III	○	●	50%
IV	○	○	20%

Detection Area
(see diagram)

	1	2	3	
I	●	●	●	5s
II	●	○	○	30s
III	○	●	○	1min
IV	○	○	●	5min
V	○	○	○	10min
VI	○	○	○	20min
VII	○	○	○	30min

Hold Time

	1	2	3	
I	●	●	●	2000Lux
II	○	○	○	50Lux
III	○	○	○	20Lux
IV	○	○	○	5Lux
V	○	○	○	2Lux

Ambient Light

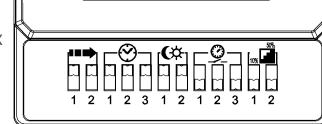
NB: Must be set to 2000 lux to disable

	1	2	3	
I	●	●	○	10s
II	●	○	○	1min
III	○	●	○	5min
IV	○	○	○	10min
V	○	○	○	30min
VI	○	○	○	1H
VII	○	○	○	+∞
VIII	○	○	○	0s

Stand-by Time

	1	2	
I	●	●	10%
II	●	○	20%
III	○	●	30%
IV	○	○	50%

Stand-by Dimming Level



Technical

Transmission Power: <0.2mW
Power Consumption: ~0.9W
HF System: 5.8GHz CW radar, ISM band
Detection Motion Speed: 0.6-1.5m/s

Detection Area

