

Application Note

DX Series: Upgrading to V1.25 Firmware

Introduction

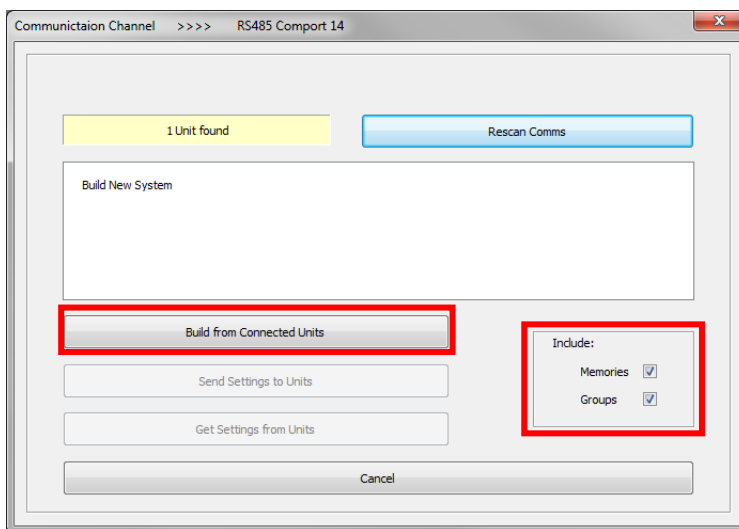
This upgrade will require you to perform a factory reset of your amplifier, which will result in the loss of any user memories you have stored. It is important that you follow the instructions below step by step, so that your data is backed up correctly before you upgrade and can be re-installed to your Delta amplifier once the upgrade is completed.

Please do **NOT** skip any of the steps, doing so could result in a loss of data from your system which cannot be recovered.

Backing Up User Memories

This section only contains information relevant to backing up user memories from your Delta amplifiers prior to performing the firmware update. For a detailed explanation of how to connect to your DX-100i/80i amplifiers using Audiocore Amped Edition v9.23 please refer to the DX series user's manual.

Once you have made the physical connections between your PC and the DX amplifiers the instructions below assume you are starting from a blank work space in Audiocore:



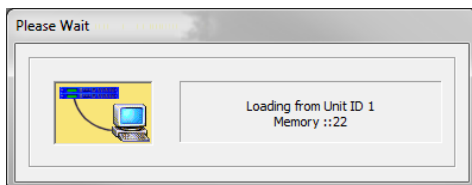
Pressing the Online button will display the Comms Control window, which shows the current connection type in the title bar and a variety of status and options.

As there are no pre-existing units in the workspace, the only option is to "Build System from Connected Units" — the yellow pane in the example shows that one has been discovered, you may see more units depending on how many you have connected in your system

The status window shows that the Build New System is available.

Note the two tick boxes to include unit memories and group data in the upload which will start when the "Build System From Connected Units" button is pressed.

To back up the unit memories to your Audiocore file you must make sure the "Memories" tick box checked. If you have not used grouping before or are unsure, leave "Groups" unchecked.



After pressing the "Build..." button a progress window will appear. The units will connect and the memories will be downloaded in Unit ID sequence. Make sure that each Unit ID appears in this window. Once complete it will close and the units will appear in the workspace.

At this point save the Audiocore file, as a back-up, to a convenient place on your PC. You can then click the 'On Line' button again to disconnect Audiocore and then close it down.

Upgrading Firmware

Loading new firmware uses the “DAS_DeltaLoader_V1.20” utility that is available with the firmware “bin” (binary) files on the DAS website (see related downloads of DX series amplifiers). Firmware is amplifier model specific, please be very careful when selecting and uploading the firmware files. As part of the ZIP file download you should have all the V1.22 firmware files required for each model.

Amplifier Communications Set-up

Updates can be performed through an Ethernet, USB or RS485 connection. Choose the correct port on the amplifier and configure it accordingly through the Interface Sub-menu. See **page 36** of the User Manual for more info on choosing the interface.

Download the Files

Go to the DX series page on www.dasaudio.com and check in “related downloads all files needed to do the update:

Products > Amplifiers > DX Series Amplifiers > DX-80i



Other products
of this series:









Series

DX-80i

FEATURES

TECHNICAL DATA

DOWNLOADS

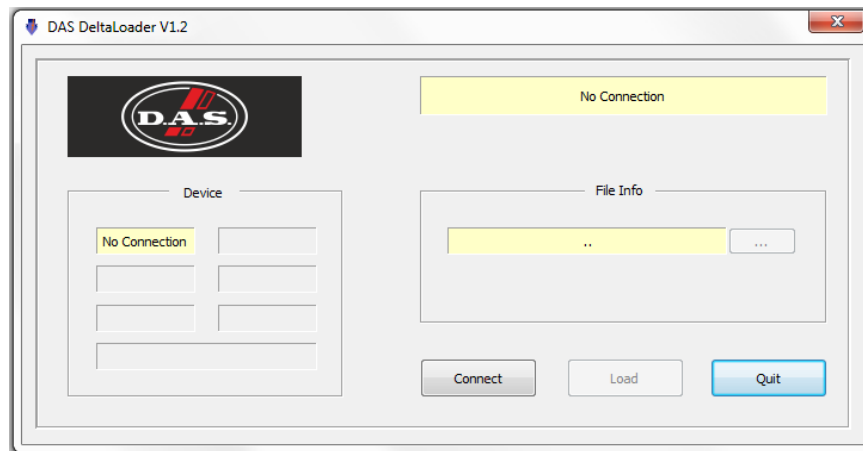
-  **Configuration Guide using DX Amplifiers**
Configuration guide using DX series amplifiers with SF, HQ, Artec, UX and WR series products.
-  **Photo DX-80i**
High Resolution, 0.7 MB
-  **Photo DX Family**
High Resolution, 1.8 MB
-  **DX Amplifiers User Manual**
PDF, 2 MB
-  **DX Audiocore Software**
Audiocore V9.23
-  **DX Firmware update**
Bin files, loader and instructions
-  **DX Audiocore Presets**
DX-80i DX-100i presets
-  **DX-80i Spec Sheet**
English, 2 MB

Unzip the files – you will have the loader application, and the firmware files as appropriate.

Connect To The Amplifier

Plug in the appropriate cable according to your chosen connection method. Remember – you will need to make sure your amplifier is set to ID1 for the loader to find it.

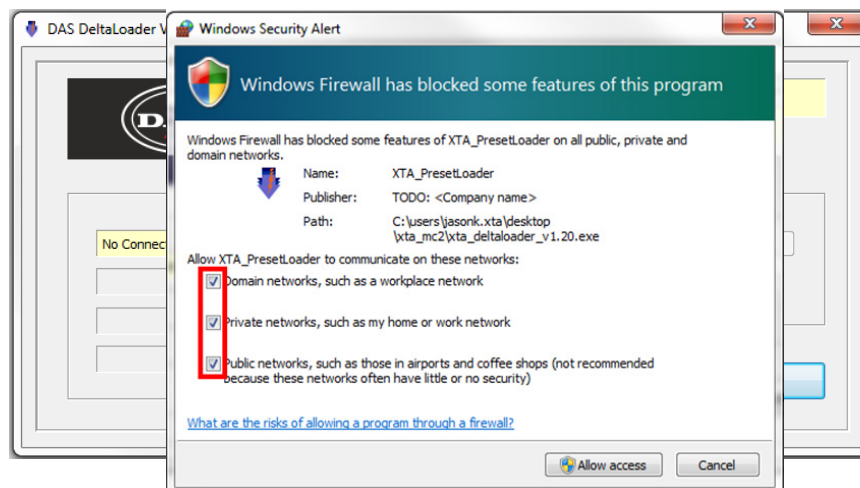
Start the DAS_DeltaLoader application:



Click the “Connect” button, the software will scan all available connections and search for connected amplifiers.

Note:

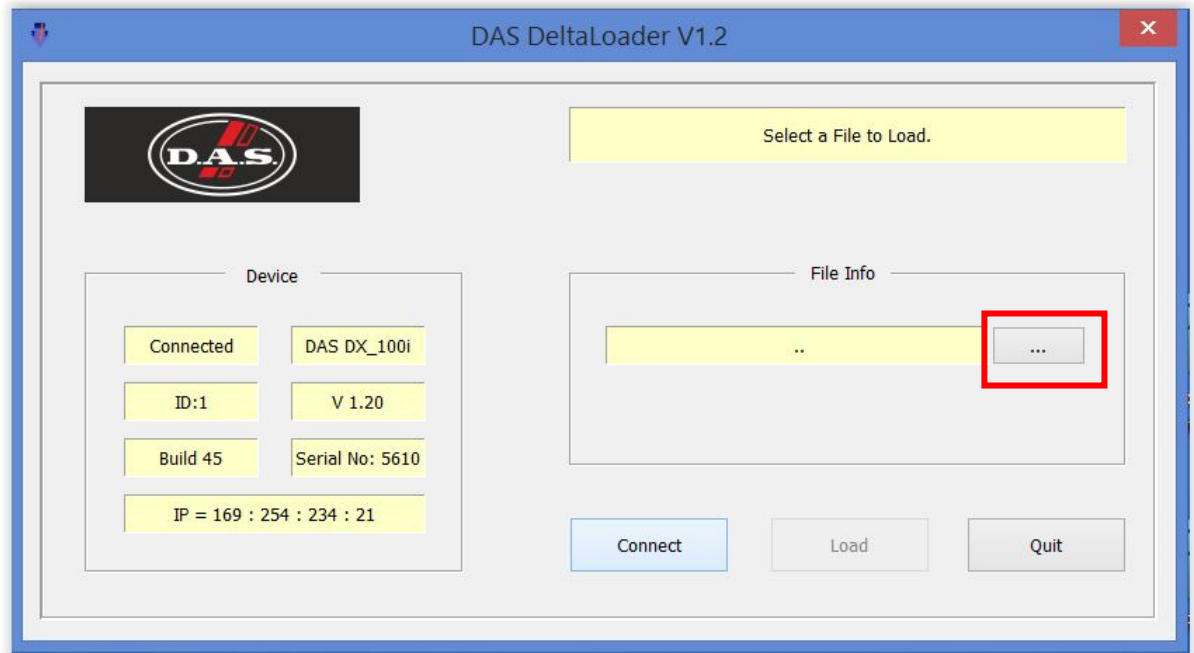
Depending on your Windows Internet Security settings, you may see the window below the first time you open DAS_DeltaLoader and try and connect via an Ethernet connection. It is important that you accept all 3 tick boxes (as shown below) so that the software can access your network and discover the DX amplifiers.



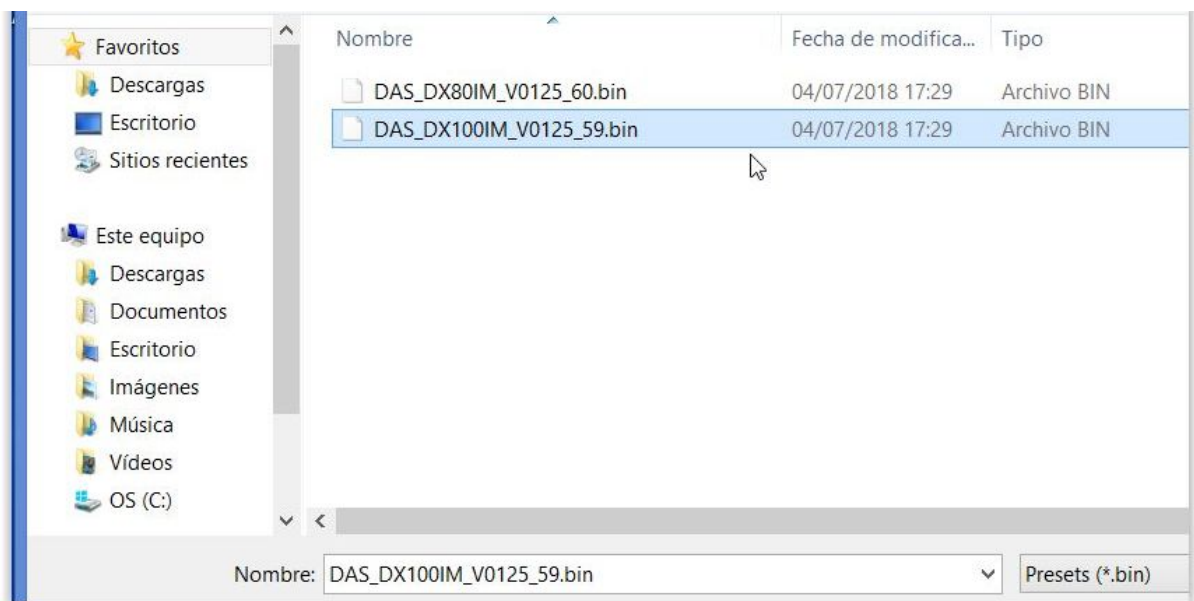
After a few seconds, the unit that you want to update should be located and its status and type should be displayed, along with the current firmware and some other information.

Choose What To Load

Click the button in the File Info section.

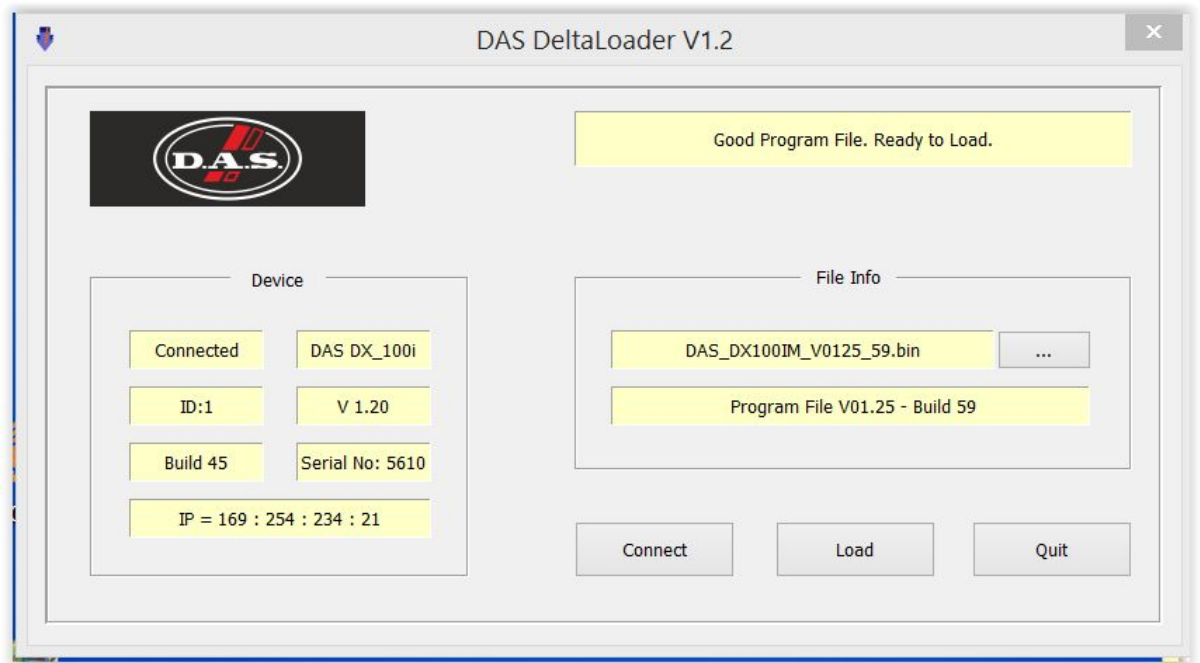


The file are no longer filtered by model, so please be careful and make sure you select the firmware .bin file that corresponds to the connected amplifier. Loading the incorrect firmware file could render the amplifier inoperable.

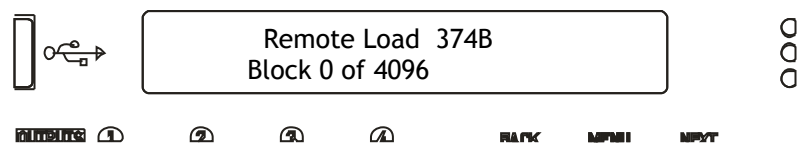


Start The Update!

Just before you press the “Load” button – please close any other applications running on the PC – interruptions in the process could render your amplifier inoperable. Do not disconnect the cable, turn off the power or attempt to close the loader app once loading has begun!



Now that you have been warned (!) – press the “Load” button. Confirm the load, and the amplifier will switch to Standby and begin to load the new firmware. A message detailing progress will accompany the bar on the loader app:



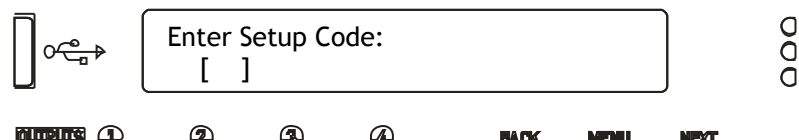
Upon completion, the app will close and your amplifier will restart.

Once the amplifier has restarted turn the power off.

Factory Reset (Please do NOT skip this step)

After the new firmware has been installed it is very important that a factory reset of the amplifier is performed. If you do not perform this step the DSP may perform erratically, so this is an essential step in the process.

Turn the amplifier on with the BACK and ENTER keys held. The display will show:



Use the EDIT and MUTE keys to represent the characters A, B, C D for EDITs and 1, 2, 3, 4 for MUTEs.

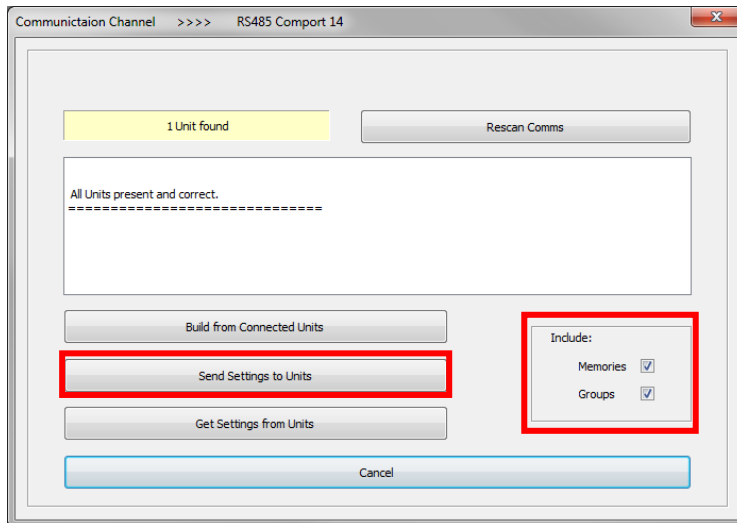
Type in one of the following codes to initiate a setup function:

D4B13D – clear **all user memories** and reset to defaults, keeping security and factory alignment settings

After entering the code above your unit will restart again and you will be ready to reconnect to Audiocore and upload your User Memories.

Remember to check the remote interface settings and unit ID's for each amplifier as these will have been reset to factory defaults as part of the reset process.

Re-installing User Memories



After checking the interface settings and Unit ID's you can now use the Audiocore file you saved earlier to upload the user memories back to your amplifiers.

Open Audiocore Amped Edition and load the file you saved earlier.

Check that you have the correct Comms mode selected in Audiocore.

As before click the 'On Line' button. Make sure that the number of units found is the same as the number of units in the workspace.

Make sure that the 'Memories' tick box is checked and use the 'Send Settings to Units' button.

This will send all the User Memories and reinstall them in each Unit ID.

Finally, you should power cycle your unit to complete the changes.

Congratulations!!! The upgrade is now complete