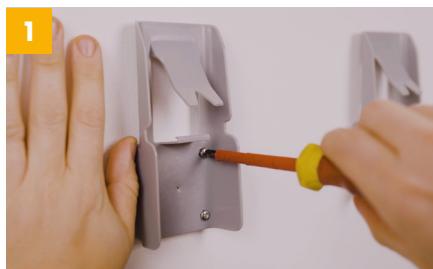




Scan me for
video

IFU



Fix the SafeClip bracket to the wall
Fix the SafeClip bracket using the provided screws. Place at a height that is safe for use.



Assemble your Sharpsafe® container
Assemble your container in line with the relevant IFU. Ensure you have selected the right size container for the bracket.



Ensure the label is facing forward
This ensures the fill line and safety information is always visible.



Position the handle
Ensure container is in temporary closure. Position handle over the bracket and lower until you hear an audible click.



Final closure
Support the bottom of the container with one hand and push down on the closure flap until you hear an audible click.



Remove the container
Hold the base of the container and angle it 45 degrees. Pull the container upwards and remove from bracket.

Pocket Small Medium Large Specialist Accessories

Safer today for a sustainable tomorrow.

1 Western Avenue, Matrix Park, Buckshaw Village, Chorley, PR7 7NB, UK
+44 (0)1204 529494 hello@vernacare.com vernacare.com

As our policy is one of continuous improvement, we reserve the right to modify designs without prior notice. © Copyright Vernacare International Limited 2024. All rights reserved. CWM069 REV00



Vernacare
clinical waste
management