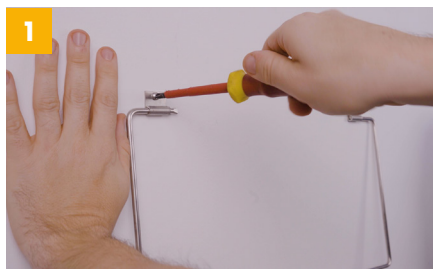




Scan me for  
video

IFU



### Fix the wall loop to the wall

Fix the wall loop using the provided screws. Place at a height that is safe for use.



### Assemble your Sharpsafe® container

Assemble your container in line with the relevant IFU. Ensure you have selected the right size container for the wall loop.



### Place container into temporary closure

When not in use, all containers should be placed in temporary closure.



### Hold the wall loop

With one hand, hold the wall loop at 90 degrees.



### Insert container into the wall loop

Holding the container by the handle, place the container vertically above the wall loop and lower into place.



### Ready for use

Let go of the handle and the container will hang in place ready for use.



### Replace once full

To release the container, hold the bracket at 90 degrees and lift out the container by the handle.

**Safer today for a sustainable tomorrow.**

1 Western Avenue, Matrix Park, Buckshaw Village, Chorley, PR7 7NB, UK  
+44 (0)1204 529494 hello@vernacare.com vernacare.com

As our policy is one of continuous improvement, we reserve the right to modify designs without prior notice. © Copyright Vernacare International Limited 2024. All rights reserved. CWM071 REV00



**Vernacare**  
clinical waste  
management

Pocket Small Medium Large Specialist Accessories