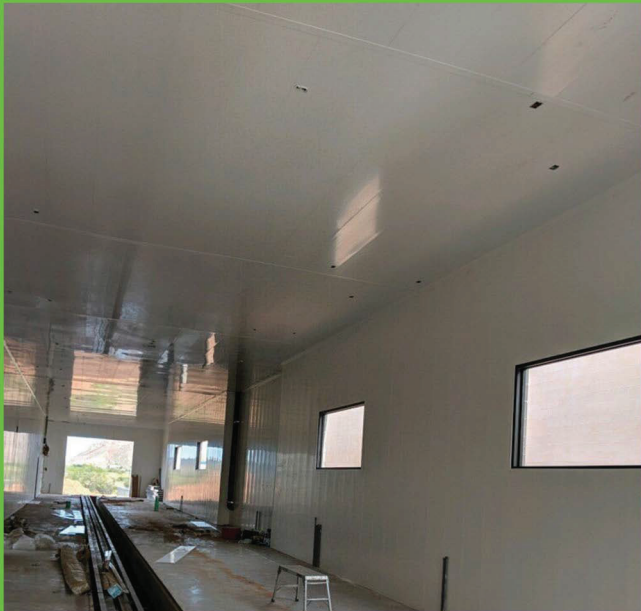




# PVC INTERLOCKING LINER PANELS

*Wall and Ceiling Panels for Car/Truck Wash, Food Preparation, Cannabis and Agriculture applications*



Available in  
 12", 16", and 18" widths →

- Class A Fire and Smoke Rating
- FDA and CFIA Requirements Met
- Iodine Tested



*Standard Lengths:*

• 8' • 10' • 12' • 14' • 16' • 18' • 20'



633 N Helena St, Spokane, WA 99202  
509.535.1555 | info@northstardirect.com

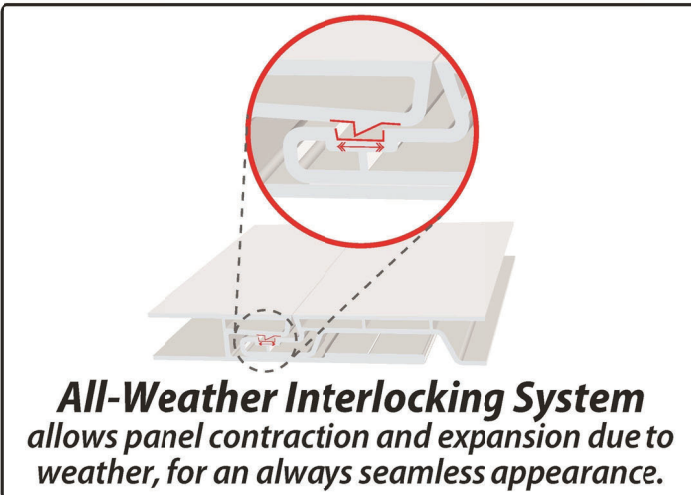
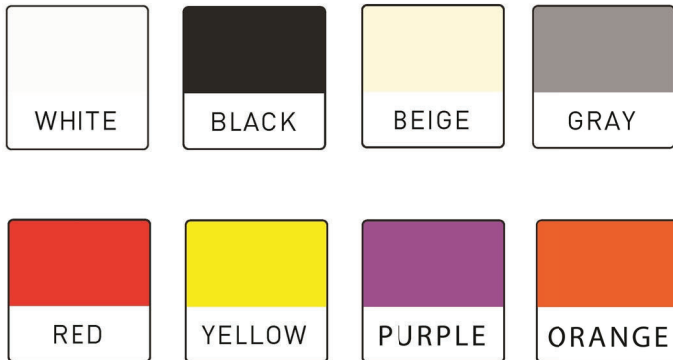
1210 N Oregon Ave, Pasco, WA 99301  
509.547.2323 | info@northstarhotsy.com

[EZPVCNA.COM](http://EZPVCNA.COM)



# PVC INTERLOCKING LINER PANELS

## COLOR CHART

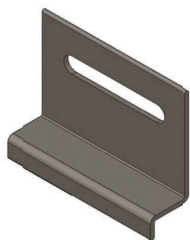


## TRIMS AND ACCESSORIES

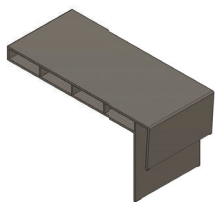
Standard Lengths 12' and 16' • All trims are available in colors



EZ J TRIM



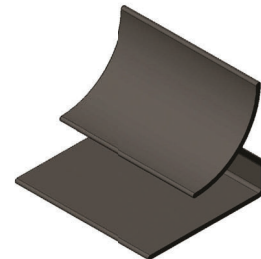
EZ DRIP TRIM



EZ SILL TRIM



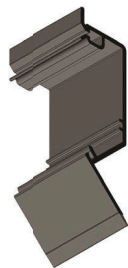
EZ MULTI H



EZ INSIDE CORNER COVE

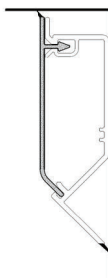


EZ CROWN CAP



EZ CROWN BASE

CEILING



WALL

CAP

BASE



EZ 2PC H TRIM

MALE

FEMALE



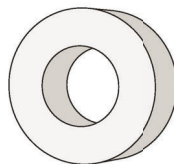
EZ 2PC MULTI CORNER



EZ 45 TRIM



EZ 90 TRIM



Plastic Spacer  
ø 3/8" x 1"



Hex Head Tapcon Screw  
ø 3/16" x 1-1/4"



#8 Square Stainless Steel Screw  
# 8 x 1-1/4"