

Improving Productivity Through Flexible Space Separation.

Goff's



Goff's Original Curtain Walls

Our premiere industrial space partitioning system.

Improve productivity through flexible space separation.

633 N Helena St,
Spokane, WA 99202
509.535.1555
info@northstardirect.com



1210 N Oregon Ave,
Pasco, WA 99301
509.547.2323
info@northstarhotsy.com

The way you use your space can change. Now your walls can, too.

Separating areas in your facility is often the overlooked opportunity to boost productivity & profitability for your business. Industrial curtain walls eliminate the spread of dust, contaminants, overspray, and more. Partitioning your open areas for each specific task at hand increases organization & efficiency.

Goff's Original Curtain Walls are designed to make space separation easy, providing the changeable alternative to permanent construction.

Separate work areas to increase productivity.

Whether you're separating work areas, or building a complete 4-sided area, our curtains are custom made and attach together with velcro to maintain complete space separation.

Pick flexible curtain walls over permanent construction.

Constructing walls in a facility is expensive and time consuming, leaving you with a permanent structure that can't adapt to changing processes. Goff's Curtain Walls have been increasing efficiency of spaces for the last 30 years, allowing walls to move where current tasks need them.

Flexible design made custom for your facility.

Supported by our modular track, our curtain wall systems can be reconfigured or added to later to continue optimizing your space, even as your business and processes change.



Mounting hardware is also available for increased flexibility & efficiency.

Goff's Original Curtain Walls come delivered with track & hardware to fit your dimensions & layout, with the ability to be reconfigured as needed, providing smooth, easy movement of all curtain systems for years to come.

- **Track & hardware is built with durable heavy-duty 16 gauge galvanized steel.**
- **Goff's track & connector system** allows for multiple mounting methods including suspended from the ceiling, face mounted on the wall, and floor supported.



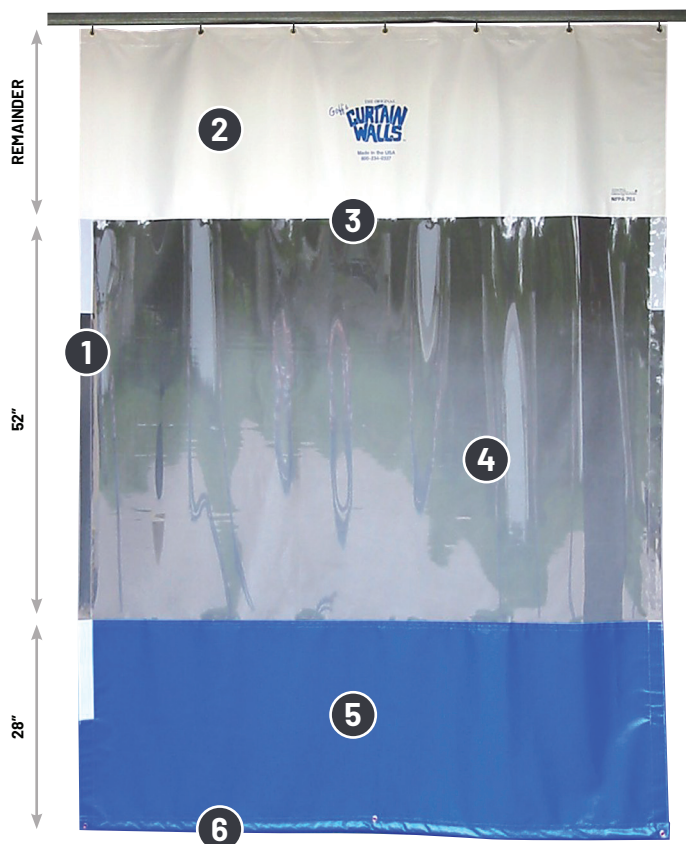
A better fit than permanent walls:

Curtain walls go where traditional walls can't, giving you the power to place walls where needed, open up spaces on demand, create instant partitions against dust, overspray, or sparks & debris. Maximize employee satisfaction, and your bottom line. Your space can be however big or small you need it, every time.

What you need, where you need it.

Goff's Original Curtain Walls are manufactured in the USA. Our curtain wall system can be made up to 100' high in any width, and come standard with these premium features:

- 1. 2" industrial strength velcro sewn in edges** to join adjacent curtain walls to one another.
- 2. Upper curtain panel provides a barrier** between your spaces for the remainder of the height.
- 3. All seams are double lock stitched**, maximizing the durability of your industrial curtain wall.
- 4. Clear window section maximizes lighting and visibility** for safety on both sides of the curtain.
- 5. Lower curtain panel provides a barrier** from window down to your floor to separate areas.
- 6. Chain weight sewn in lower pocket** keeps your curtain wall taut and straight.



Filter Panel:

Easily removable & replaceable filter panels available in 2' x 4' or 4' x 4' sizes, reinforced with a nylon scrim pattern.



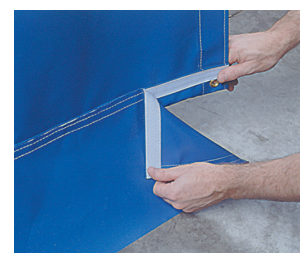
Strip Door:

Add an easy pass-through strip door within your curtain wall while maintaining separation, available in various sizes.



Upper Valance Panel:

Create a seal between your hanging track and ceiling to maximize spatial separation. Great for sloped ceilings!



Floor Sweep:

6" replaceable vinyl piece to seal the gap between your curtain wall and your floor. Perfect for uneven floors!



Wind Ties

Secure your curtain walls in cases where wind or negative pressure is present. Available in standard and heavy duty styles.



Cleaner & Shield All®:

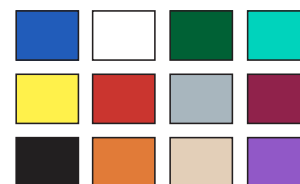
Easily & safely clean your entire curtain wall with our Cleaner, and provide a layer of protection with our Shield All coating.



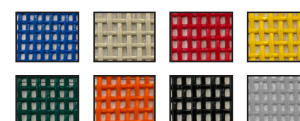
Custom Branding

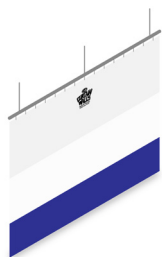
Personalize your curtain wall with company logos, slogans, or building area labels.

14 oz Vinyl Color Options:



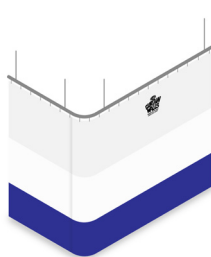
11x17 Mesh Color Options:





Single Curtain:

Use a single Original Curtain Wall for instant lateral separation between tasks.



Two-Sided Curtain:

Create an L-shaped partition to segment off a corner of your building as separate space.



Three-Sided Curtain:

Add a 3 sided curtain wall to one of your permanent building walls to create a private room.



Four-Sided Curtain:

Build an entirely standalone room using a 4-sided curtain wall for modular space design.

Easily Access your Separated Space:

Conveniently access your new space by combining Goff's Original Curtain Walls with our easy-to-use high performance vinyl door line. Whether you're in and out of your space all day, or only need occasional access, we've got the solution you need to make the most of your facility for years to come, boosting efficiency of your workflows.



Goff's delivers more than you expected.

With over 30 years of experience, the Goff's team is committed to delivering the most reliable and innovative solutions to improve efficiency in your facility.

(800) 234-0337 | sales@goffscw.com

Easily Installed

Expert installation is available for rapid implementation, or included instructions can guide your team through our easy to set up system. Installation can be scheduled during down time for minimal facility interruption.

Guaranteed to Last

Every Goff's Original Curtain Wall system comes with a 5 year warranty from failure in normal use due to defects in material/workmanship, and a lifetime warranty on all track, rollers and hardware.

Here to Help

The Goff's Customer Care & Tech Support team is available to answer any questions you have about your curtain wall system, making sure you get the most out of your investment at your facility.



ENTERPRISES



MADE IN USA

700 Hickory Street, Pewaukee, WI 53072
Phone: 800-234-0337 | Fax: 800-959-0170
goffsenderprises.com | sales@goffscw.com



633 N Helena St, Spokane, WA 99202
509.535.1555 | info@northstardirect.com

1210 N Oregon Ave, Pasco, WA 99301
509.547.2323 | info@northstarhotsy.com